



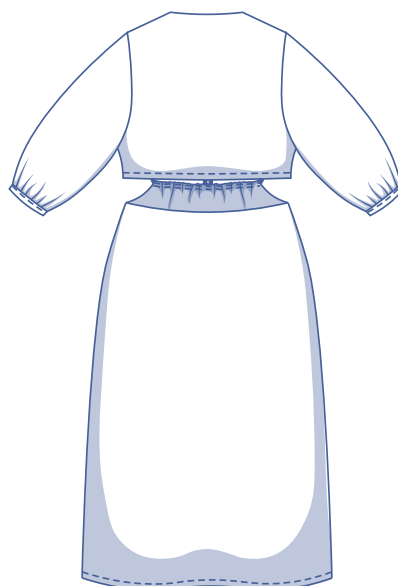
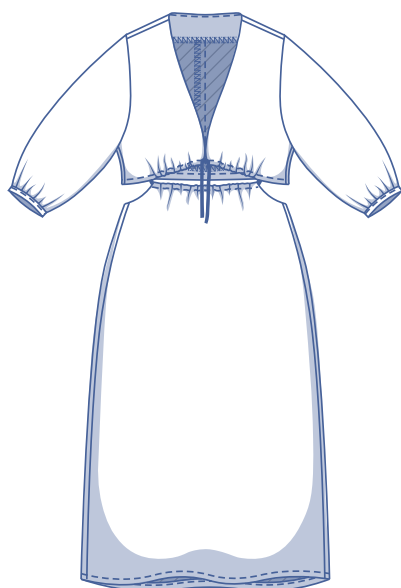
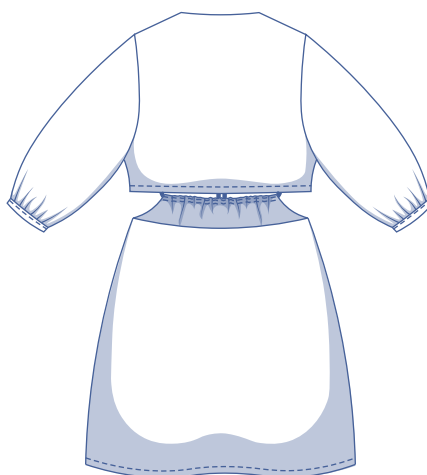
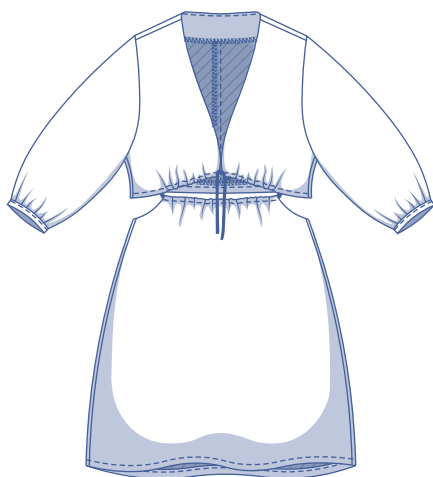
Ruba by Fibre ood

# Ruba by Fibre Mood



0 - 28

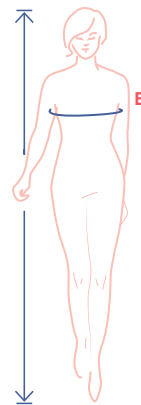
A striking trend that will certainly attract lots of attention next summer: the waist cut-out. In this dress, the cut-out is subtle at the front showing only a trace of the midriff. In addition, Ruba plays with a deep V décolleté and 3/4 slightly gathered sleeves. Using this pattern you make a sunny short dress, but you can also easily turn it into a midi to maxi dress.



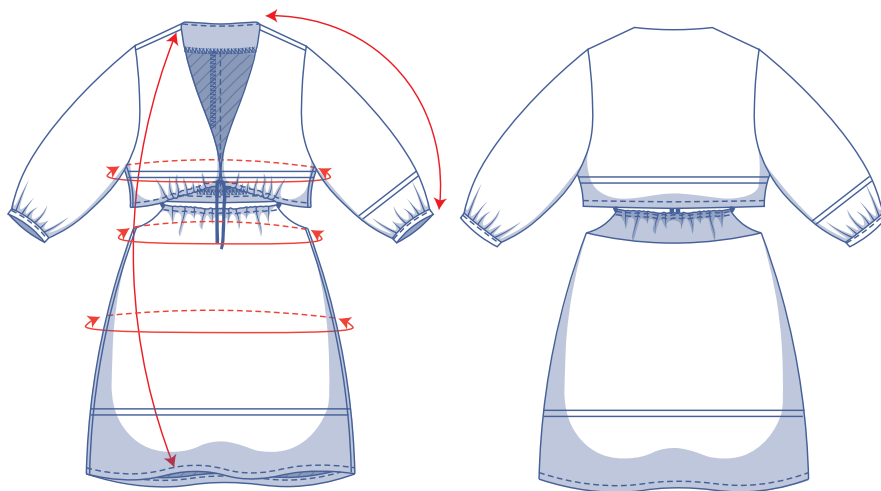
## size chart (in inches)

size	XS		S		M		L		XL		XXL		XXXL		
	0	2	4	6	8	10	12	14	16	18	20	22	24	26	28
body height	5' 25"	5' 38"	5' 45"	5' 48"	5' 51"	5' 54"	5' 58"	5' 61"	5' 64"	5' 64"	5' 64"	5' 64"	5' 64"	5' 64"	5' 64"
B (bust)	29.9	31.5	33.1	34.6	36.2	37.8	39.4	40.9	43.3	45.7	48	50.4	52.8	55.1	57.5

Choose your size based on the **bust measurement**. Pick the size that is the best match for your bust. Then, check the waist and hip measurements in the table below to be sure there is sufficient room at the waist and hips.



## pattern measurements (in inches)



== shorten or lengthen the pattern here

This chart's measurements are the pattern measurements based on the fabric type and serve as a reference. Ease has been added to the width measurements (in addition to the exact body measurements) for a more comfortable fit. Ruba is designed to have a fitted cut.

size	0	2	4	6	8	10	12	14	16	18	20	22	24	26	28
length short version	34.6	34.9	35.1	35.3	35.5	35.8	36.9	37	38.6	38.9	39.2	39.6	40	40.2	40.5
length long version*	46.9	47.1	47.3	47.5	47.7	48	48.3	48.5	49.2	49.6	49.9	50.2	50.5	51	51.2
sleeve length**	21.7	21.8	21.9	22	22.1	22.3	22.4	22.5	22.6	22.8	23	23.1	23.3	23.5	23.6
bust	33.2	34.8	36.4	37.9	39.5	41.1	42.7	44.2	46.6	49	51.3	53.7	56.1	58.4	60.8
waist	31.7	32.5	33.3	34.8	36.4	38	38.8	40.4	42.9	45.5	48.1	50.6	53.2	55.7	58.3
hips	41.3	42.8	44.4	45.6	46.8	48	49.1	50.3	52.7	54.7	56.6	58.6	60.6	62.5	64.5

\* Lengthen pattern pieces 3 and 4 to achieve this full length.

\*\* Including the shoulder length and sleeve trim.

Compare the stated lengths to the measured or desired lengths. **Lengthen** or **shorten** the top, the skirt and/or the sleeves by cutting the pattern pieces at the indicated double lines. Then either increase the distance between the cut pieces by the desired amount (to lengthen), or overlap the pieces (to shorten). Make sure that the CF and CB lines and the side seams are always straight.

## IMPORTANT

Adjust the amount of fabric to be used based on these alterations.

## notions



- Thread
- Iron-on interfacing: max. ½ yd
- Fabric: see table

fabric use, short version		0	2	4	6	8	10	12	14	16	18	20	22	24	26	28
fabric width 43"	yd	2 ½	2 ½	2 ½	2 ¾	2 ¾	2 ¾	3	3 ¼	3 ¼	3 ½	3 ¾	3 ¾	4	4	4 ¼
fabric width 55"	yd	1 ⅞	1 ⅞	1 ⅞	1 ⅞	2	2	2 ⅛	2 ¼	2 ⅝	2 ⅝	3	3	3	3	3 ⅛

The corresponding fabric layout can be found on page 6 of these sewing instructions.

fabric use, long version		0	2	4	6	8	10	12	14	16	18	20	22	24	26	28
fabric width 43"	yd	3 ¼	3 ¼	3 ¼	3 ¼	3 ¼	3 ½	4	4	4 ¼	4 ¼	4 ¼	4 ¼	4 ½	4 ¾	4 ¾
fabric width 55"	yd	2 ¾	2 ½	2 ½	2 ½	2 ⅝	2 ⅝	2 ⅝	2 ⅝	2 ¾	3	3 ¼	3 ½	3 ½	3 ⅝	3 ⅝

## fabric advice



Ruba makes life easy: fabrics like lyocell, chambray, linen, viscose (crêpe), mousseline, broderie anglaise and modal are all options for a subtle look. Prefer a more statement dress? Then choose a stiffer fabric like poplin (with or without some stretch).

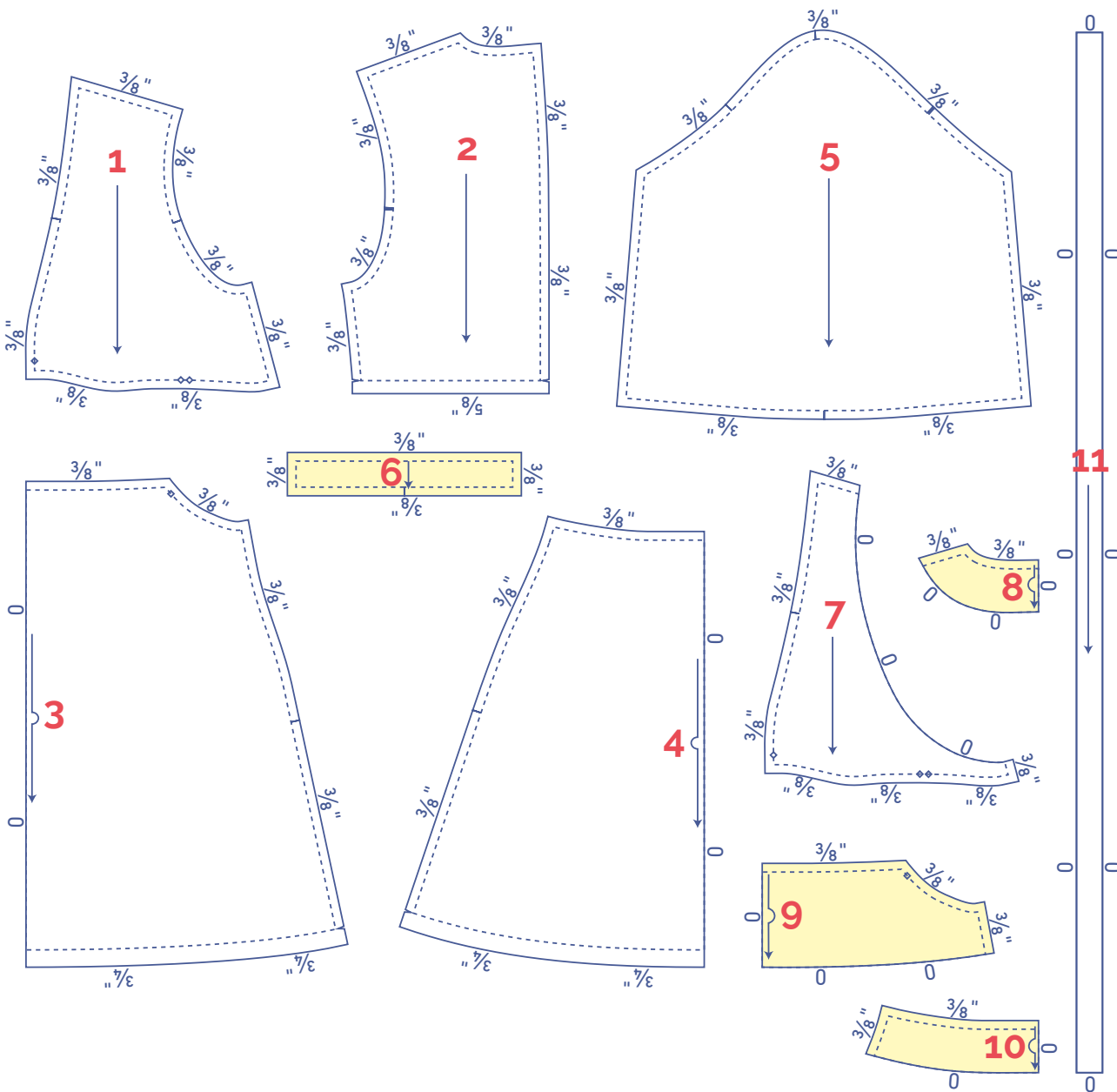
**HAPPINESS**  
*is a*  
**FULL BOBBIN**






## pattern pieces & seam allowances (in inches)

To sew the garment as described in the instructions, draw the illustrated seam allowances around the paper pattern pieces before cutting them out. If you are using a PDF pattern, the pattern can be printed with or without seam allowance. To find out more, watch the [video](#).

1. front: 2x
2. back: 2x
3. skirt F: 1x on fabric fold
4. skirt B: 1x on fabric fold
5. sleeve: 2x
6. sleeve trim: 2x
7. facing F: 2x
8. facing B: 1x on the fabric fold
9. facing skirt F: 1x on the fabric fold
10. facing skirt B: 1x on the fabric fold
11. tie: 1x

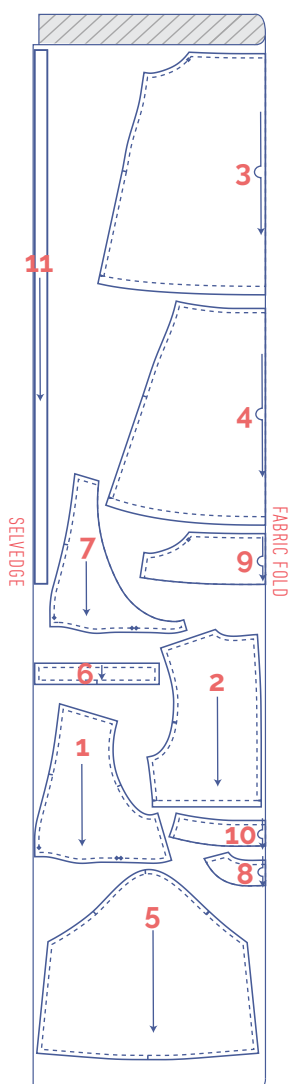


 material type	
	fabric
	iron-on interfacing

## fabric layout for solid fabrics

### fabric width 43"

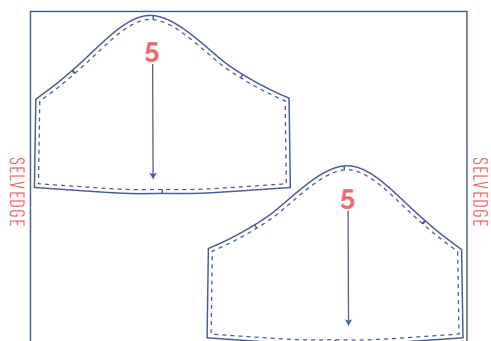
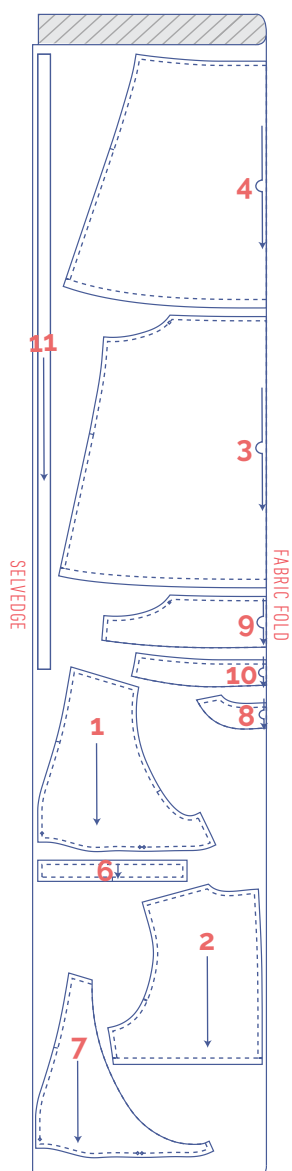
0 - 10



#### Important!

*You only need pattern piece 11 once.*

12 - 24

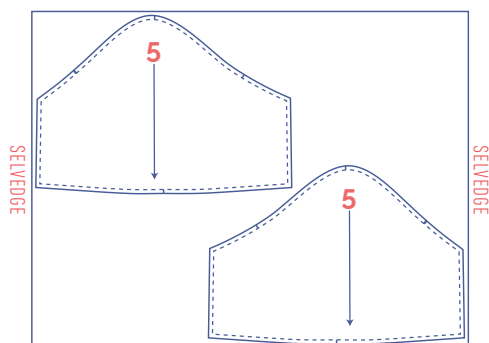
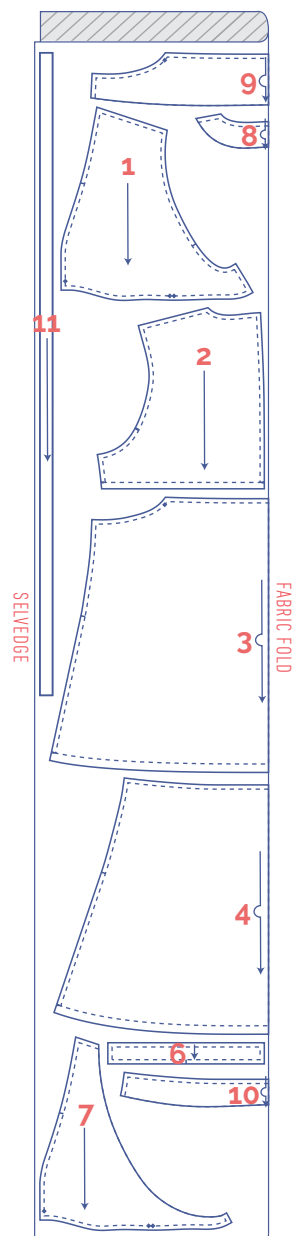


#### Important!

*You only need pattern piece 11 once.*

*Because the fabric is opened out and in a single layer, you will also need to cut a mirror image of pattern piece 5. That's because you need a left and right sleeve.*

26 - 28



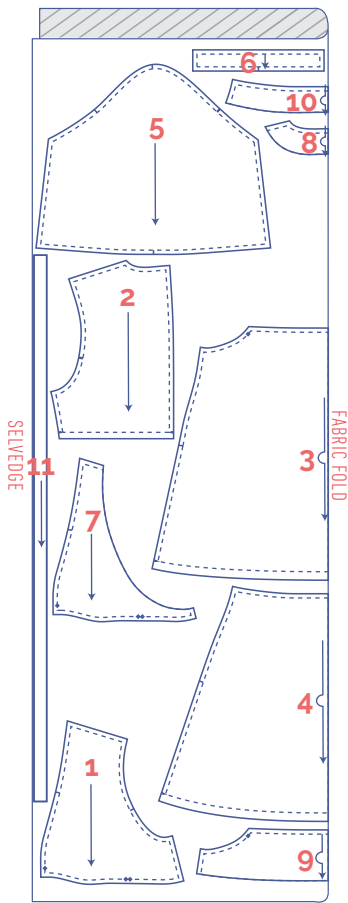
#### Important!

*You only need pattern piece 11 once.*

*Because the fabric is opened out and in a single layer, you will also need to cut a mirror image of pattern piece 5.*

## fabric layout for solid fabrics fabric width 55"

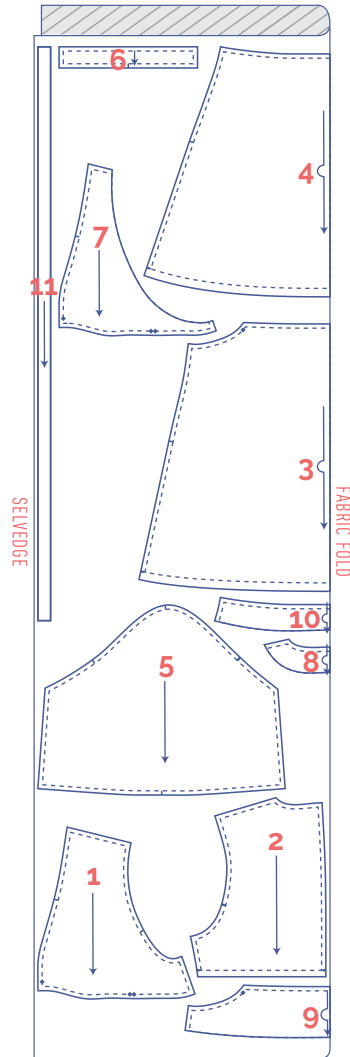
0 - 14



### Important!

*You only need pattern piece 11 once.*

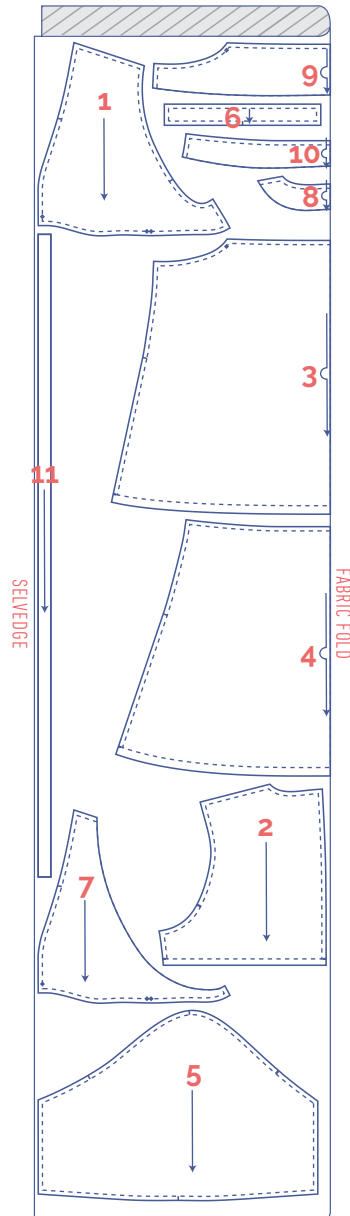
16 - 18



### Important!

*You only need pattern piece 11 once.*

20 - 28



### Important!

*You only need pattern piece 11 once.*

## marking pattern pieces



notch the paper pattern and fabric at the following points

I single notch

II double notch

V V notch/fabric fold



mark with a marking thread



centre point

# sewing instructions



The method used to finish the seams depends on the fabric used. The pieces are always sewn together with the right sides of the fabric facing, unless stated otherwise.

**F** front

**B** back

**CF** centre front

**CB** centre back

**RB** right back

**LB** left back



right side



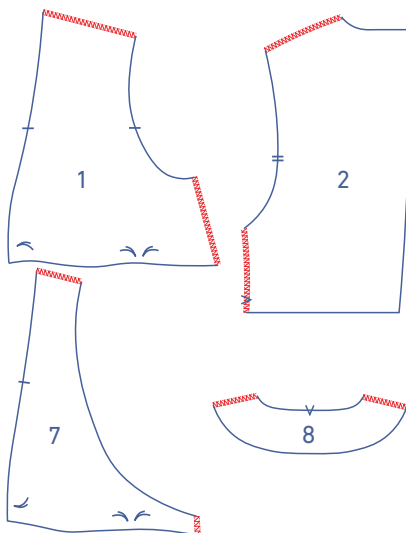
wrong side



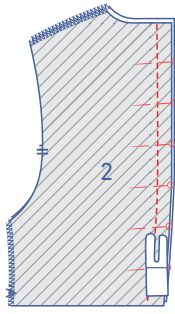
iron-on interfacing

**1**

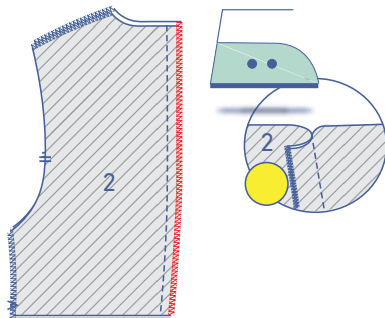
Finish the raw edges of the pieces F (1), B (2), facing F (7) and facing B (8) where indicated with overlocking.



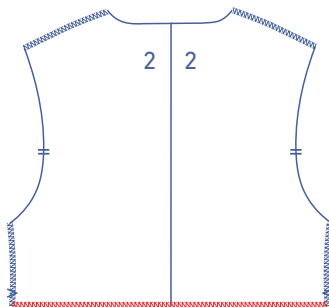




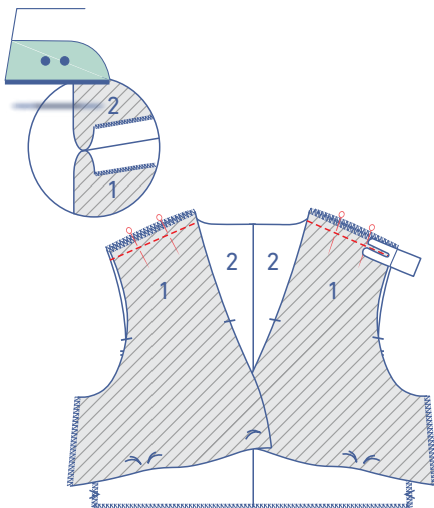
Pin and sew the CB seams into place.



Finish the raw edges with overlock stitching. Press the seam allowance towards the RB.

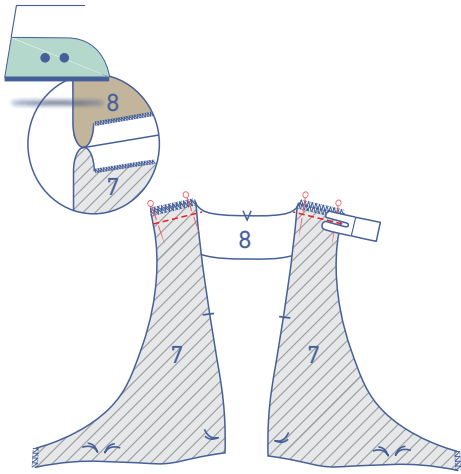


Overlock the bottom to finish.

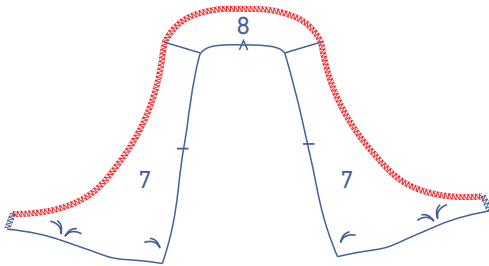


Pin and sew the shoulder seams together. Press the seam allowances open.

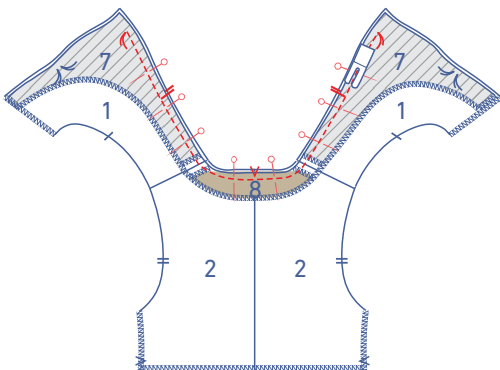
Pin and sew the shoulder seams of the facings F and B. Press the seam allowances open.



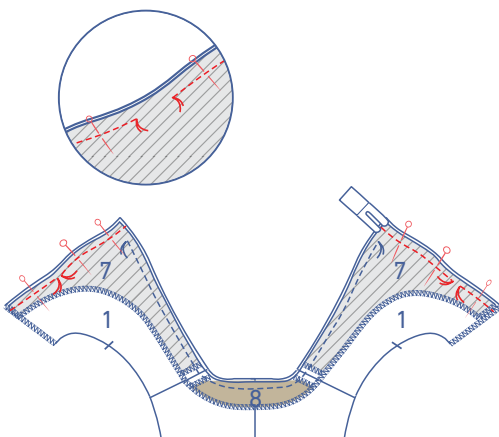
Finish the raw edge indicated with overlock stitching.



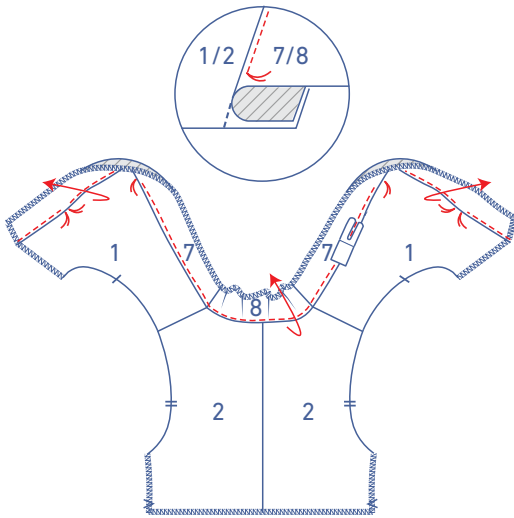
Place the facing on top of the bodice at the neckline, right sides together. Pin and sew the neckline between the marking threads and with the corresponding markings aligned.



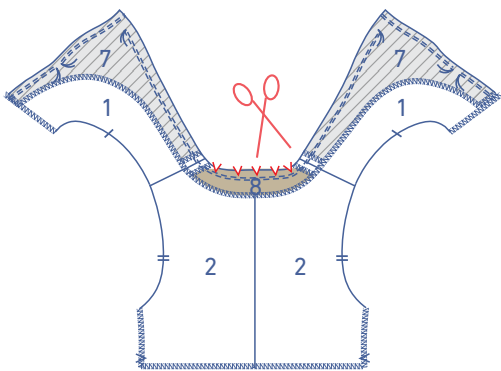
Pin the bottom of facing F to F. Stitch between raw edges and marking threads, ensuring you leave an opening between the marking threads as shown.



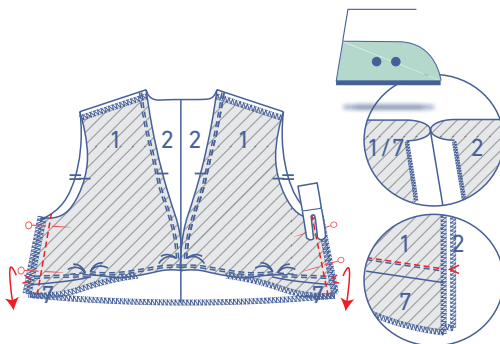
Fold the facing over/up and sew to the seam allowance underneath, right next to the seam. Sew as far into the corners as possible. Remember to leave a gap between the marking threads.



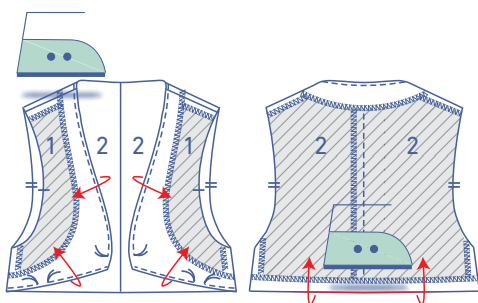
Notch the remaining seam allowance in the neckline from the back to create a nice round curve.

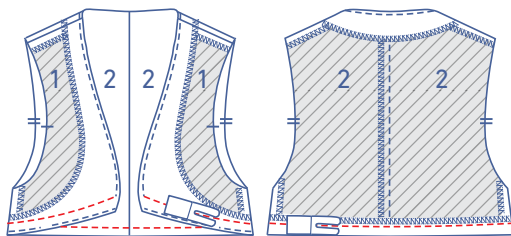


Fold the facings down then pin and sew the side seams. The seam that joins piece F and facing F are aligned with the V notch in B. Press the seam allowances open.



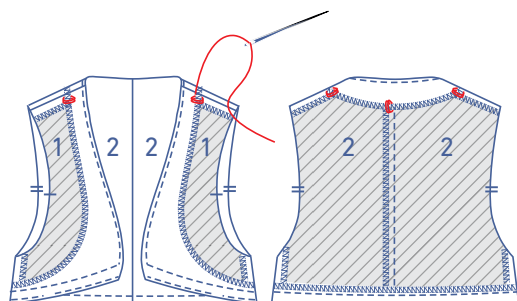
Press the facing and hem allowance neatly towards the wrong side.



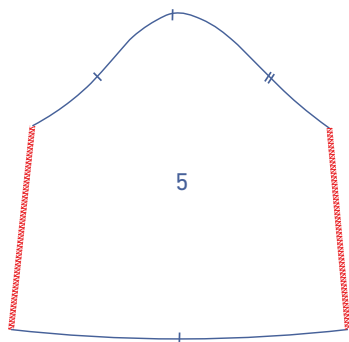


3/8"

Top stitch  $\frac{3}{8}$ " from the bottom, sewing through every layer.

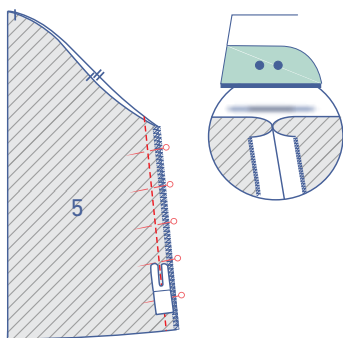


Use a few stitches to secure the facing level with the shoulder seams and the CB seam.

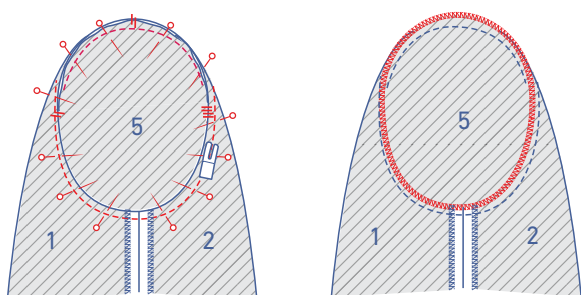


**2**

Finish the raw edges of the sleeve (5) with overlock stitching where indicated.

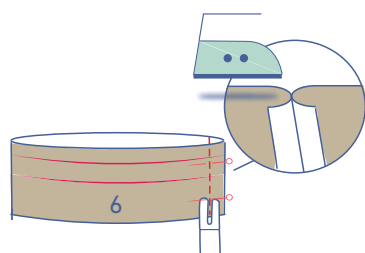
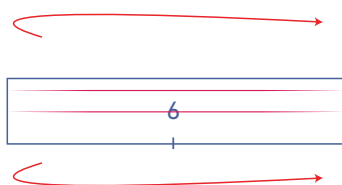
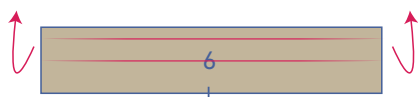
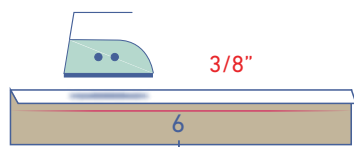
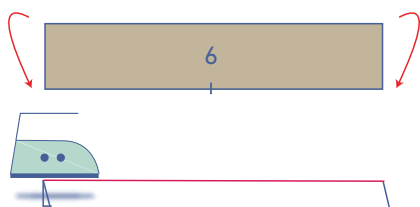
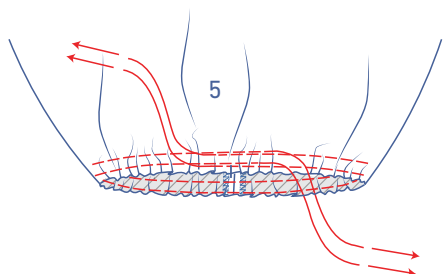
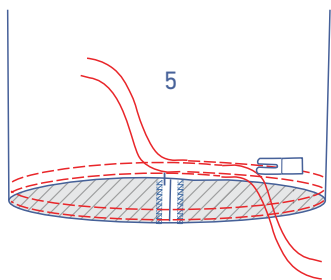


Pin and sew the underarm seam. Press the seam allowance open.



Pin and sew the top of the sleeve (= sleeve cap) to the armhole, matching the notches. The single notch marks the front, while the double notch marks the back. The single notch at the top aligns with the shoulder seam. Use many pins to distribute the 'excess' fabric evenly between the notches and avoid puckers.

Finish the raw edges with overlock stitching.



### 3

Sew 2 parallel rows of stitching along the sleeve hem with a long stitch at a low thread tension. Leave a length of thread at the start and end of your stitching.

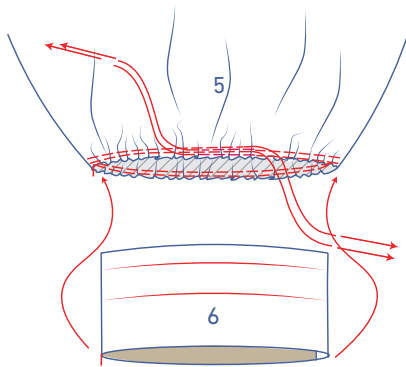
Gently tug the ends of the threads to gather the fabric.

Press the sleeve trim (6) in half so that the long sides are on top of each other with the wrong sides together. Open back out.

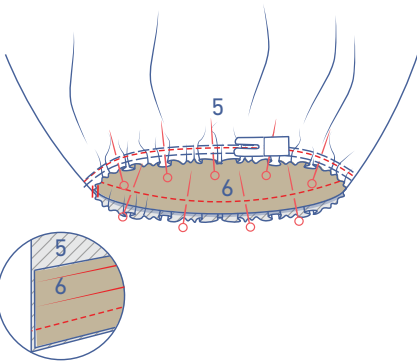
Press the unnotched long side  $\frac{3}{8}$ " towards the wrong side to create a fold line. Open back out.

Fold the sleeve trim in half so that the short sides are on top of each other with the right side of the fabric together.

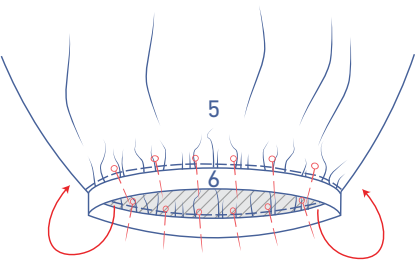
Pin and sew the short ends. Press the seam allowance open.



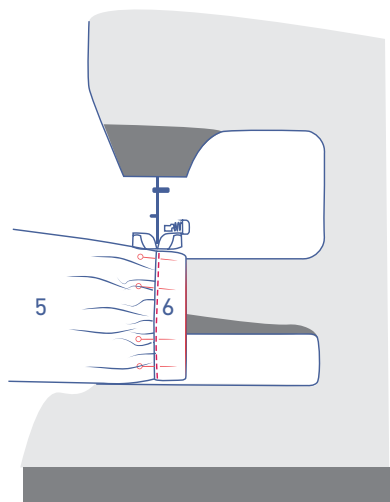
Slide the sleeve trim into the sleeve. Right side of the sleeve trim faces the wrong side of the sleeve.



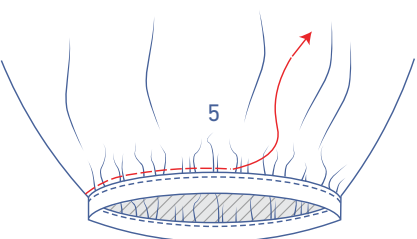
Pin the unpressed raw edge of the sleeve edge to the bottom of the sleeve along the wrong side, distributing gathers until the notches and sleeve seam match. Sew into place.



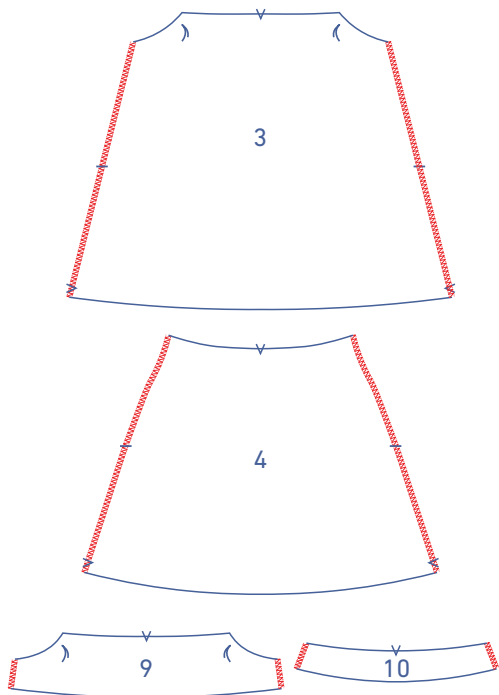
Fold the sleeve edge over to the right side of the sleeve, tuck in the raw edge and place the pressed edge directly over your previous stitching.



Edgestitch into place.

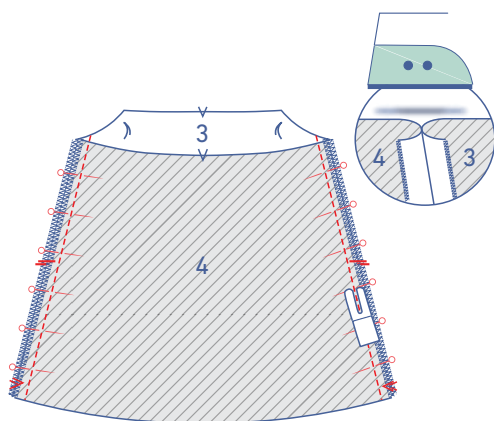


Remove the gathering threads.

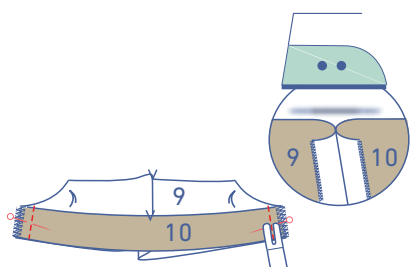


## 4

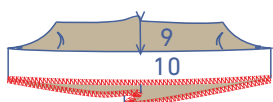
Finish the raw edges of skirt F (3), skirt B (4), skirt facing F (9) and skirt facing B (10) where indicated with overlocking.



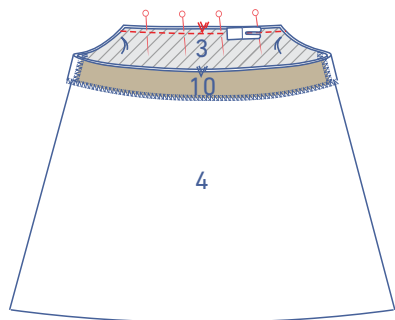
Pin and sew the side seams of the skirt. Press the seam allowances open.



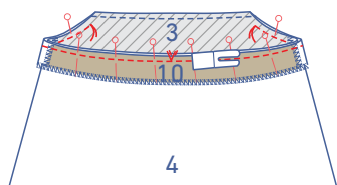
Pin and sew the side seams of the facing pieces together. Press the seam allowances open.



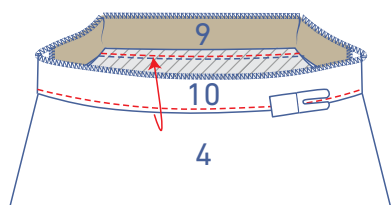
Overlock the bottom to finish.



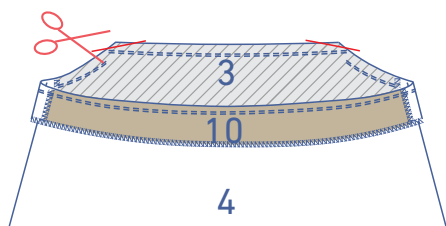
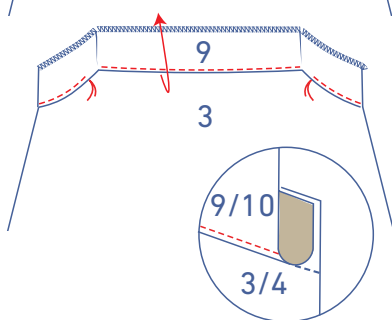
Pin and stitch the indicated side of the front facing to the front skirt piece, matching the corresponding markings.



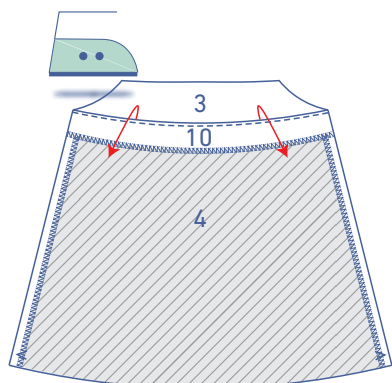
Now, pin and stitch the remaining sides of the facing to the skirt between the marking threads.



Fold the facing over/up and sew to the seam allowance underneath, right next to the seam. Sew as far as possible into the corners.

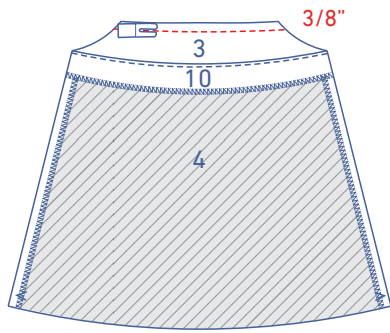


Trim the seam allowance at the corners.

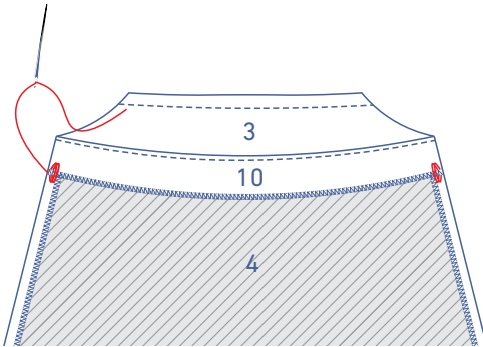


Press the facing neatly towards the wrong side.

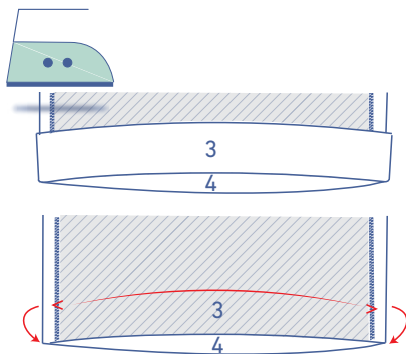




Top stitch  $\frac{3}{8}$ " from the top of the skirt F, sewing through every layer.

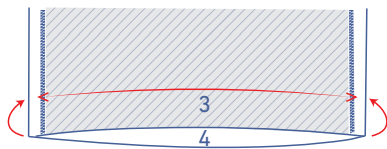


Secure the facing with several stitches level with the side seams on the skirt.



## 5

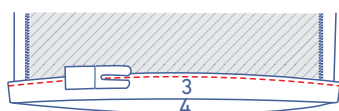
Press the hem allowance of the skirt over at the V notches, and open again.

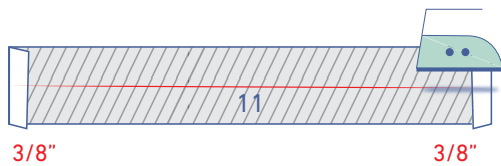


Fold the raw edge to meet the pressed fold line, and fold over again.



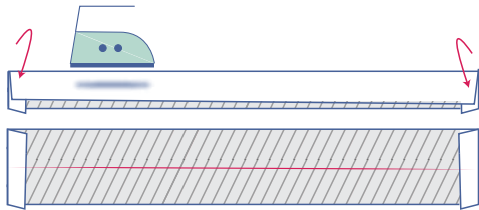
Edgestitch into place.



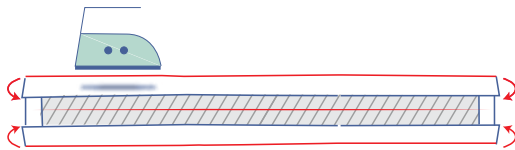


## 6

Press both short ends of the tie (11)  $\frac{3}{8}$ " towards the wrong side.



Press the tie in half with the long ends together and the wrong sides together. Open back out.



Press the raw edges in to meet the fold line in the middle.



Now, fold back in half along the pressed centre line and press.



Sew all the way around, right next to the edge.

Thread the tie through the channels, following the diagram.

