

# Belle by Fibre ood



# Belle by Fibre Mood



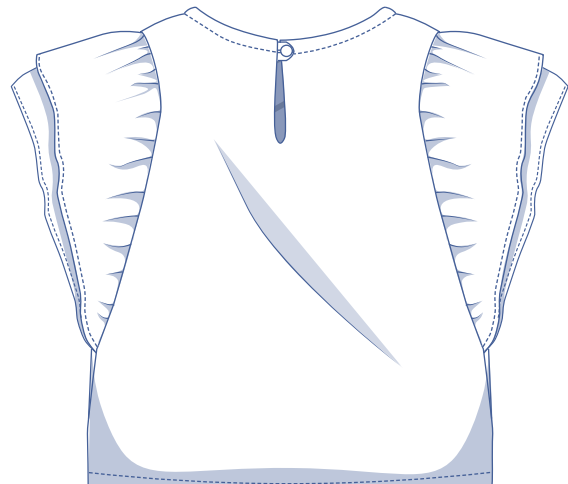
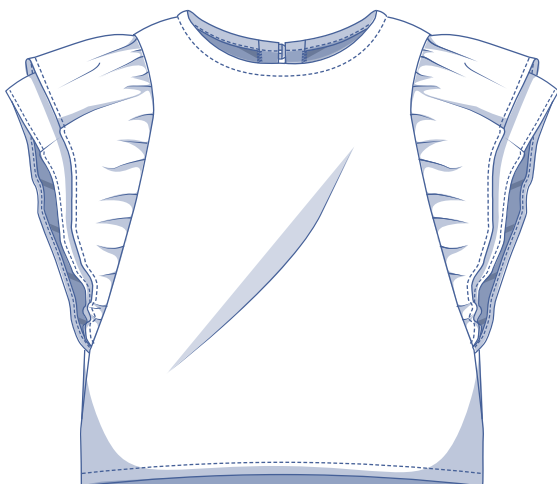
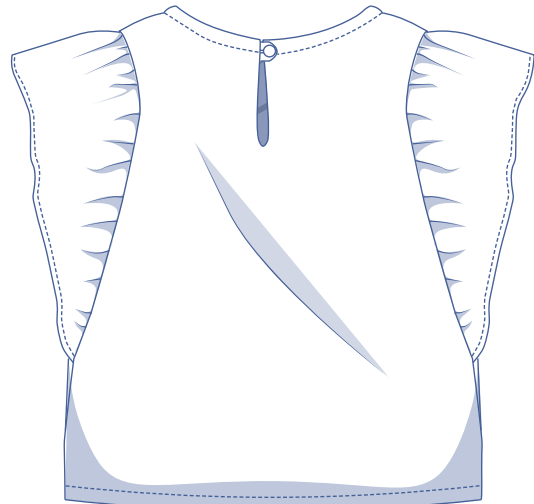
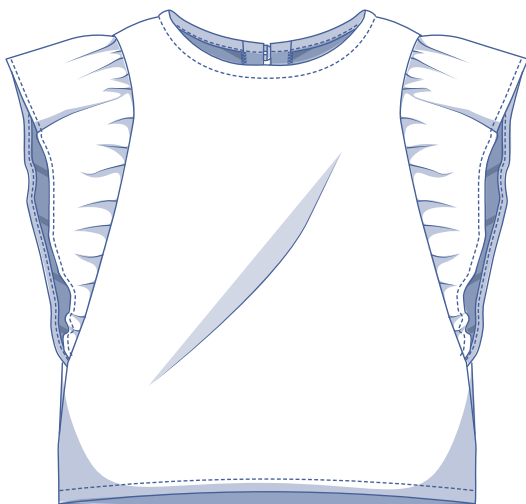
**XS - XXXL**

Drumroll for Belle please! This is a fab top with an extra dose of charm. Belle is so versatile and can be worn with so many things, it really is a must for every summer wardrobe!

The round neck is perfectly on-trend as are the romantic ruffled sleeves. Tempted to go for a few more frills?

Make a double flounce instead of just the one! Belle has a sweet teardrop keyhole at the back with a button and loop.

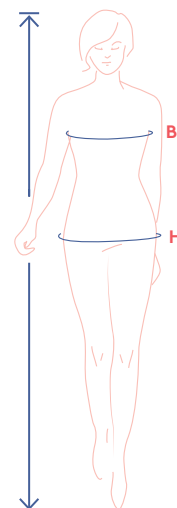
As for the length? That's up to you.



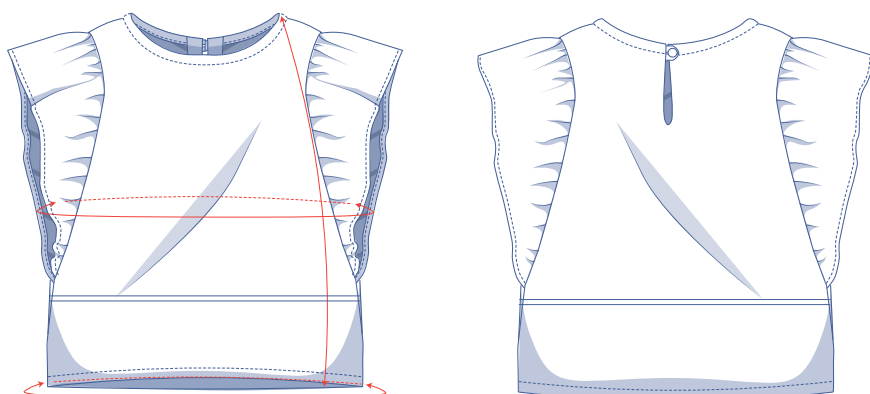
## size chart (in cm)

size	XS		S		M		L		XL		XXL		XXXL		
	4	6	8	10	12	14	16	18	20	22	24	26	28	30	32
body height	160	164	166	167	168	169	170	171	172	172	172	172	172	172	172
B (bust)	76	80	84	88	92	96	100	104	110	116	122	128	134	140	146
H (hips)	86	90	94	97	100	103	106	109	115	120	125	130	135	140	145

Choose your size based on your **bust measurement**. If your hip measurements are wider than those in the size chart, check the hem circumference in the chart below to see if there's enough room or whether the pattern needs to be altered. It's easy to do. Simply trace the line of the one size instead of the other.



## pattern measurements (in cm)



This chart's measurements are the pattern measurements based on the fabric type and serve as a reference. Ease has been added to the width measurements (in addition to the exact body measurements) for a more comfortable fit. Belle is designed to have a **loose cut**. Depending on the preferred cut, you could possibly go a size smaller or larger than the recommended size.

— shorten or lengthen the pattern here

size	XS	S	M	L	XL	XXL	XXXL
length	59.5	61.25	63	65	67.25	69.5	71.75
bust	89.25	97.25	105.25	113.25	125.25	137.25	155.25
hem circumference	91.5	99.5	107.5	115.5	127.5	139.5	157.5

Compare the stated lengths to the measured or desired lengths. **Lengthen** or **shorten** the top by cutting the pattern pieces at the indicated double lines. Then either increase the distance between the cut pieces by the desired amount (to lengthen) or overlap the pieces (to shorten). Make sure that the CF and CB lines and the side seams are always straight.



### IMPORTANT

Adjust the amount of fabric to be used based on these alterations.

## notions



- Thread
- Iron-on interfacing: max. 20 cm
- Button (Ø 1.5 cm): 1
- Fabric: see table

fabric for the single flounce top		XS	S	M	L	XL	XXL	XXXL
fabric width 110 cm	cm	190	200	205	215	225	235	245
fabric width 140 cm	cm	145	155	165	170	180	195	210

fabric for the double flounce top		XS	S	M	L	XL	XXL	XXXL
fabric width 110 cm	cm	215	225	230	240	330	345	360
fabric width 140 cm	cm	155	160	165	170	215	225	235

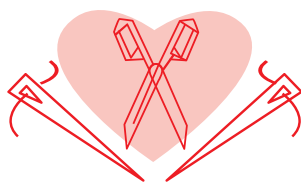
The corresponding fabric layout can be found on page 6 of these sewing instructions.

## fabric advice



Oh, the possibilities! Poplin, chambray, lyocell, muslin, crepe (viscose, polyester, etc.), satin, Broderie Anglaise, lace...and the list just goes on! For statement sleeves be sure to choose a bulkier fabric. We can't wait to see what you pick. Oh, and before we forget... knits work too!

# Proud to be #Sewista



## pattern pieces & seam allowances (in cm)

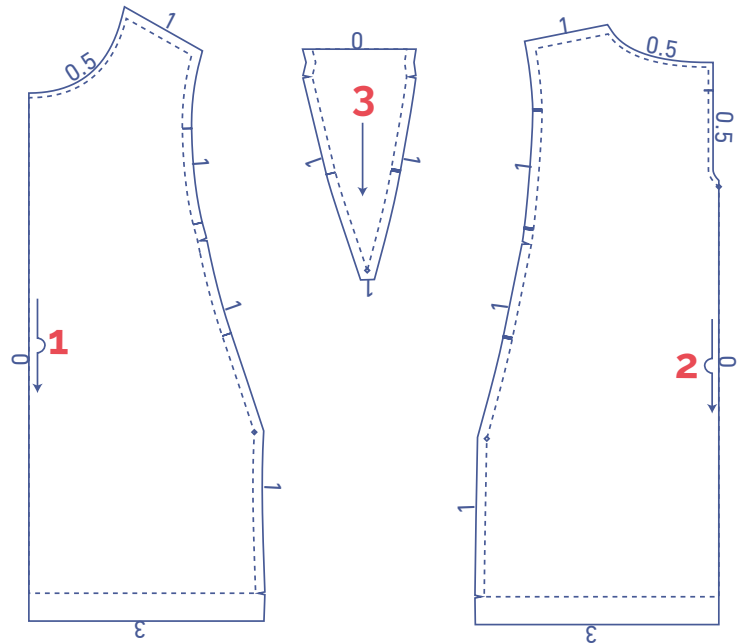
To sew the garment as described in the instructions, draw the illustrated seam allowances around the paper pattern pieces before cutting them out. If you are using a PDF pattern, the pattern can be printed with or without seam allowance.

To find out more, watch the [video](#).

1. front: 1x on fabric fold
2. back: 1x on fabric fold
3. side piece: 2x
4. **4a** flounce 1: 2x  
**4b** flounce 2: 2x (optional)
5. loop: 1x
6. back facing: 1x on fabric fold
7. bias tape: 1x




### IMPORTANT

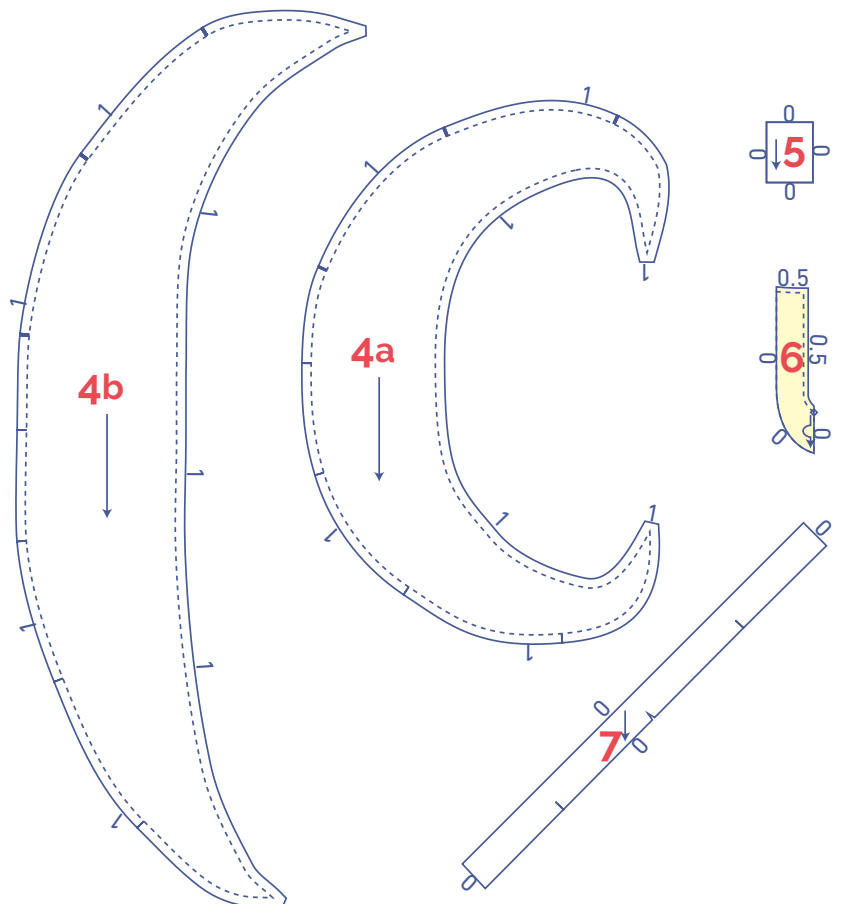
If you're making the single-flounce version, you only need pattern piece 4a. If you're making the double-flounce version, you'll need pattern pieces 4a and 4b.



### IMPORTANT

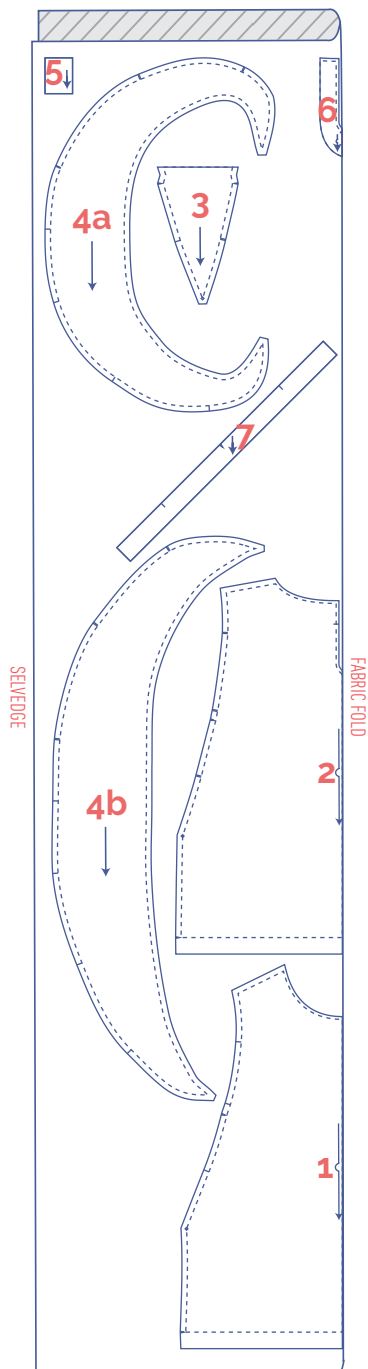
The pieces highlighted in light yellow have iron-on interfacing attached to the wrong side.

 material type	
	fabric
	iron-on interfacing



**fabric layout – solid fabrics**  
**fabric width 110 cm**

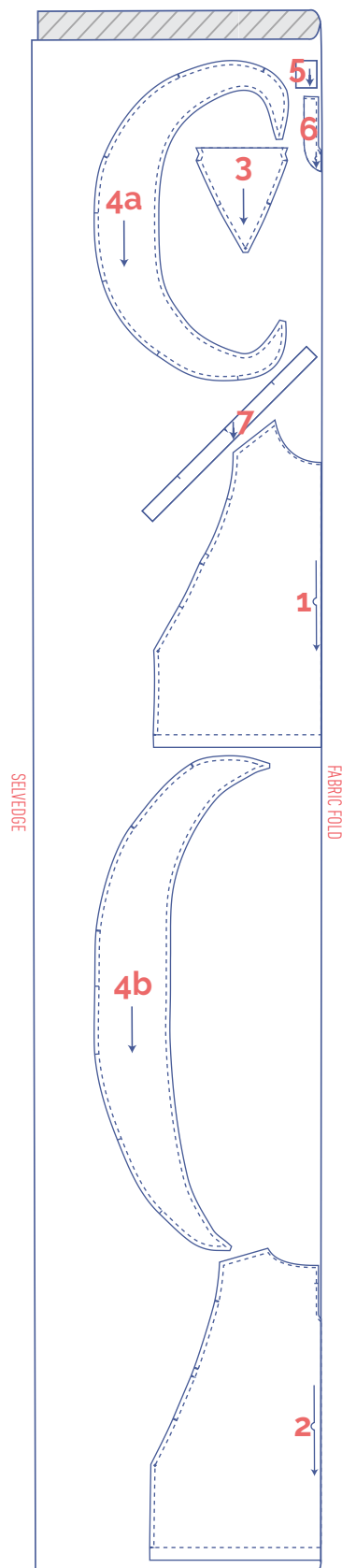
XS - L



**IMPORTANT**

You only need pattern pieces 5 and 7 once.

XL - XXXL



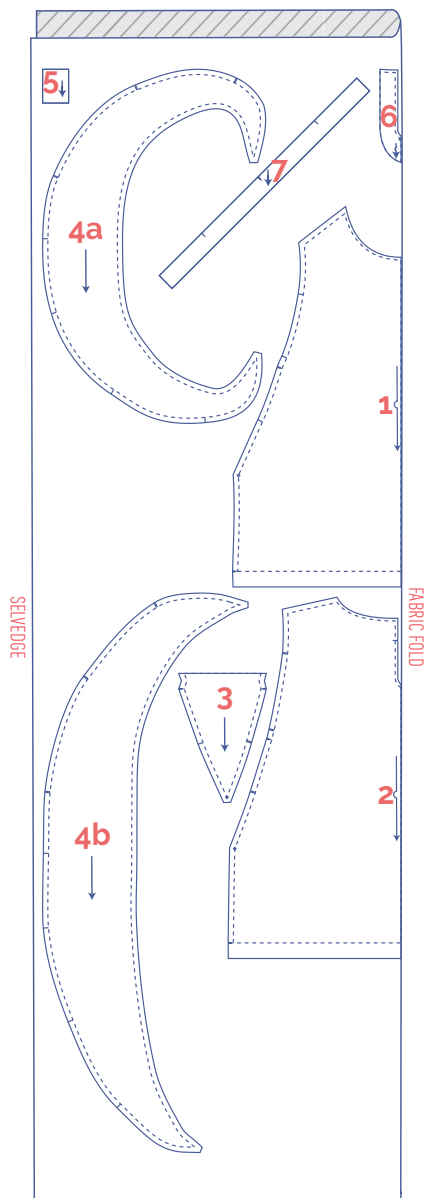
**IMPORTANT**

You only need pattern pieces 5 and 7 once.

## fabric layout – solid fabrics

### fabric width 140 cm

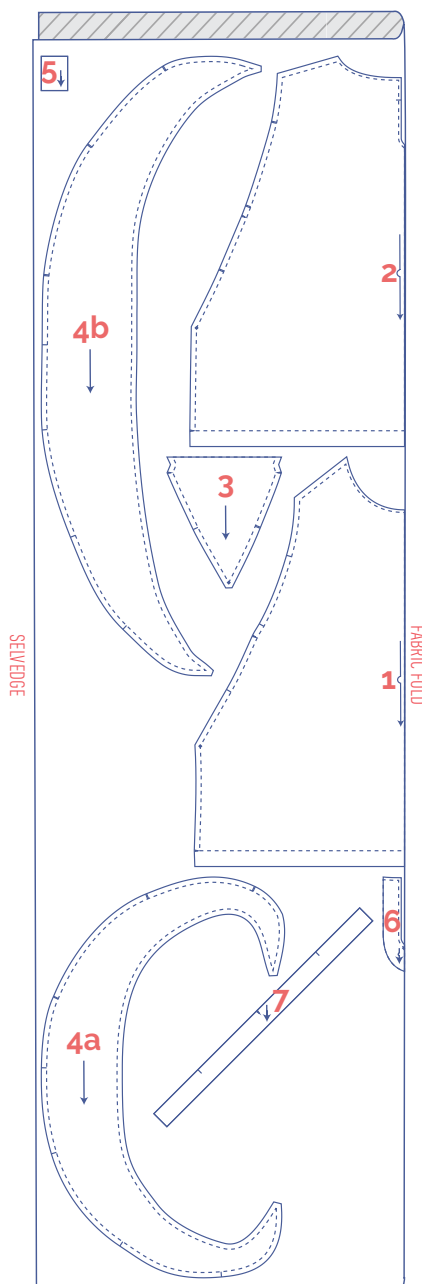
XS - L



#### IMPORTANT

You only need pattern pieces 5 and 7 once.

XL - XXXL



#### IMPORTANT

You only need pattern pieces 5 and 7 once.

## marking pattern pieces

	Notch the pattern paper and fabric at the following points
	single notch
	double notch
V	V notch

	Mark the following points using marking thread
	centre point

# sewing instructions



The method used to finish the seams depends on the fabric used.  
The pieces are always sewn together with the right sides of the fabric facing, unless stated otherwise.

F front

B back

CF centre front

CB centre back

RB right back

LB left back

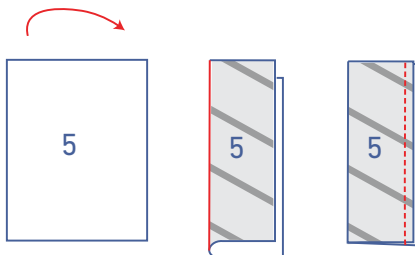
 right side

 wrong side

 iron-on interfacing

**1**

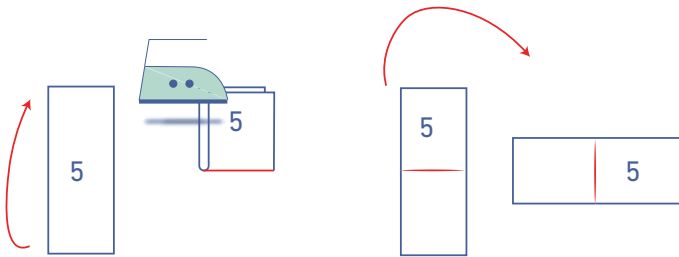
Fold the short ends of the loop (5) in half with the right sides of the fabric touching. Sew the long end.



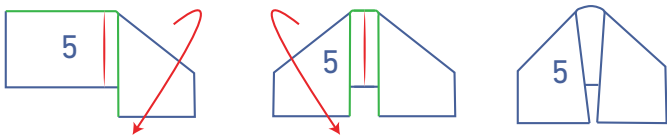




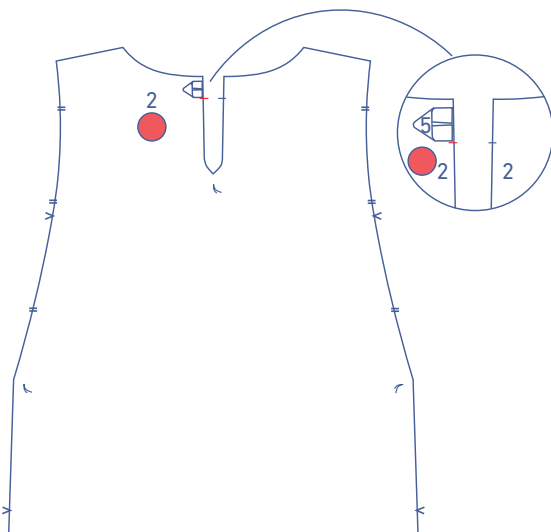
Turn out the loop the right way (so that wrong sides are facing).



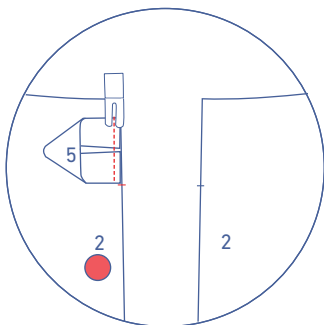
Press the long edges of the loop in half as illustrated to create a fold line and open back out. Rotate the loop to lie horizontally in front of you.



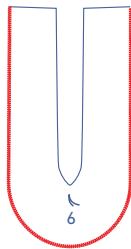
Fold the top, outside corners down diagonally on both sides so that the sides highlighted in green almost meet the pressed fold line.



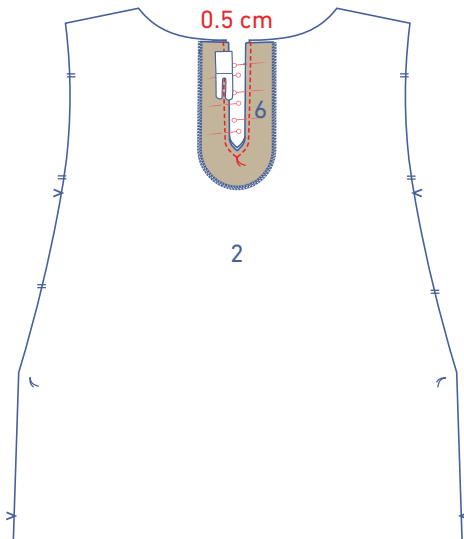
Pin the loop to the back (2) with the raw edges matching the raw edge of the CB as shown. The bottom of the loop aligns with the notch.



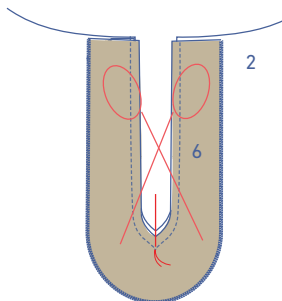
Sew into place next to the edge.



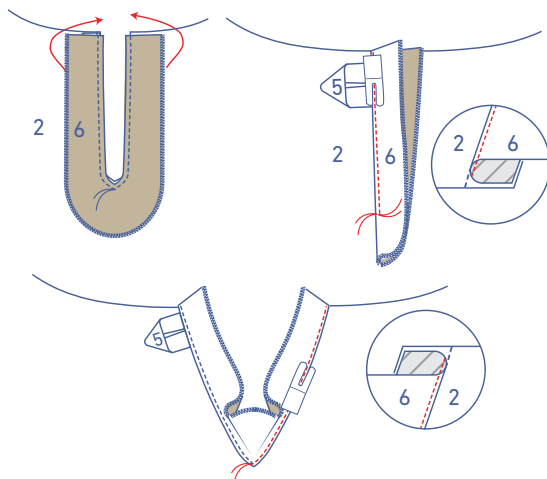
Finish the outer edge of the back facing (6) with overlock stitching.



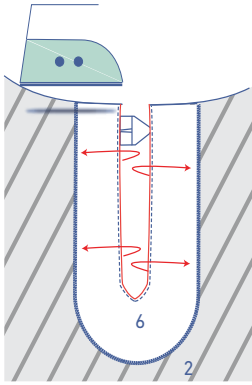
Place back facing on top of the back, right sides together. Pin and sew, matching marking threads.



Snip into the seam allowance of the back and the back facing until just before the marking thread.



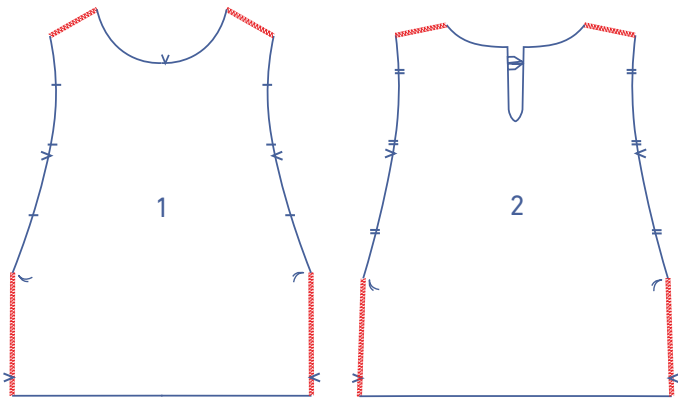
Fold the facing and the seam allowance over. Stitch the facing to the seam allowance underneath, right next to the edge. Sew as far as possible towards the U shaped curve.



Fold the facing neatly onto the wrong side of the back and press neatly flat.

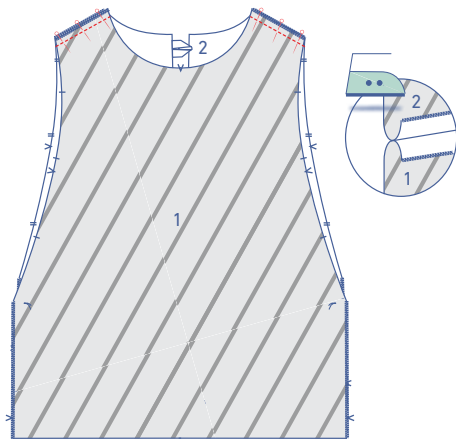
## 2

Finish the shoulders and sides of the front and back with overlock stitching.



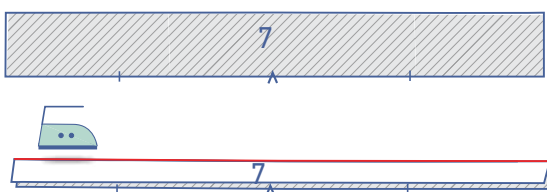
## 3

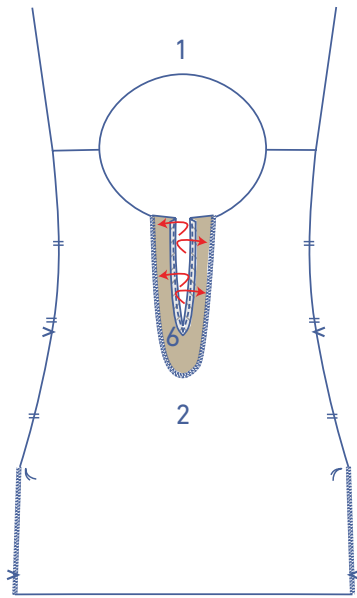
Pin and stitch the shoulder seams. Press the seam allowances open.



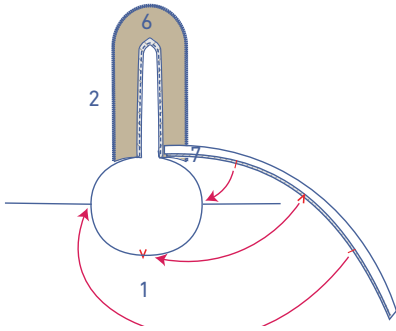
## 4

Press the short ends of the bias tape (7) in half with the wrong sides touching.

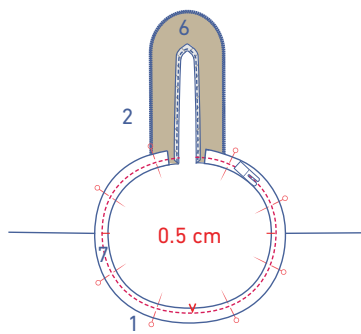




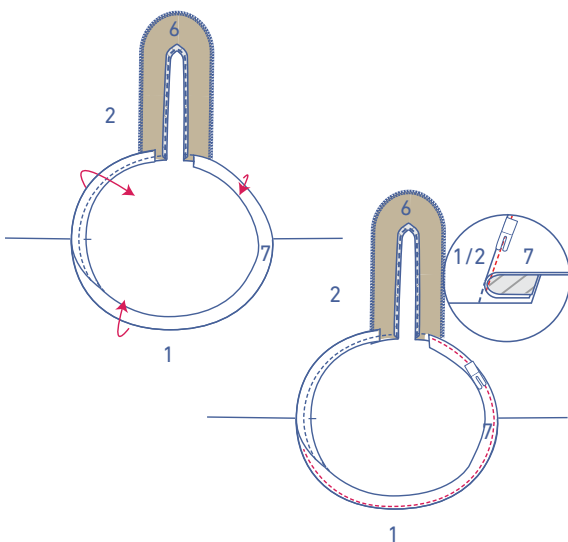
Press the facing back onto the right side of the back.



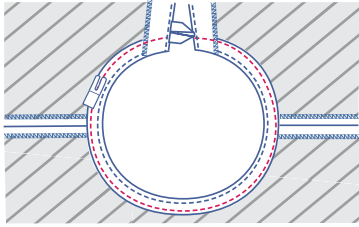
Pin and sew raw edges of the bias tape to the neckline, matching seams and notches. The bias tape is on top of the folded facing on both edges.



Sew into place at 0.5 cm from the edge.



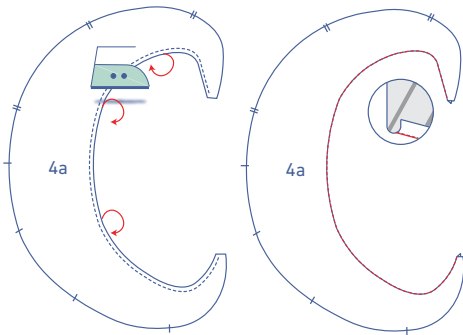
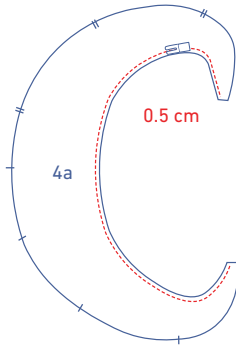
Fold the bias tape and seam allowance over and stitch the bias tape to the seam allowance underneath, right next to the seam. Sew as far as possible towards the ends of the bias tape.



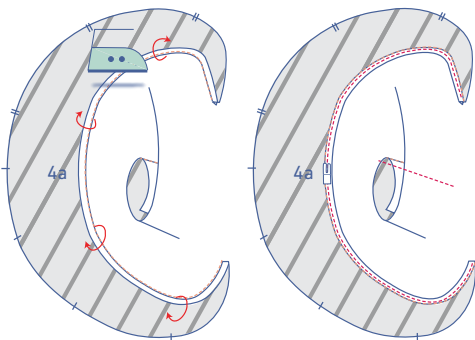
Fold the bias tape all the way over to the wrong side and edgestitch into place. Start and finish on the facing (at the finished CB line) as shown.

## 5

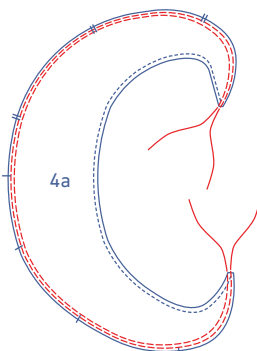
Finish the side of flounce 1 (4a) as follows: Stitch at 0.5 cm from the unnotched raw edge.



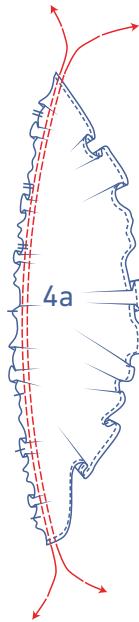
Press the raw edge towards the wrong side along your previous stitching.



Fold over again and sew into place right next to the edge.



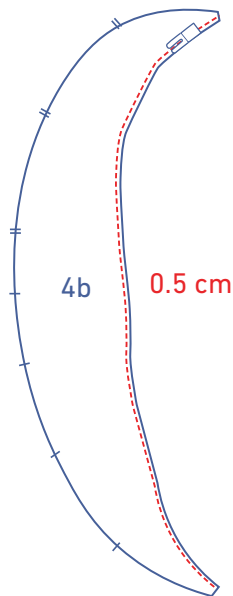
Use a long stitch at a low thread tension to sew 2 parallel rows of stitching along the notched raw edge. Leave a length of thread at the start and end of the stitching.



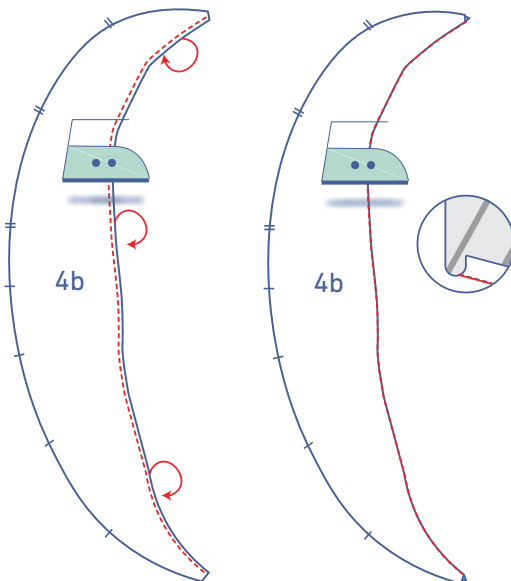
Carefully tug the ends of the threads to gather the fabric.

**OPTIONAL:** If you're making the double-flounce version, finish flounce 2 (4b) as follows:

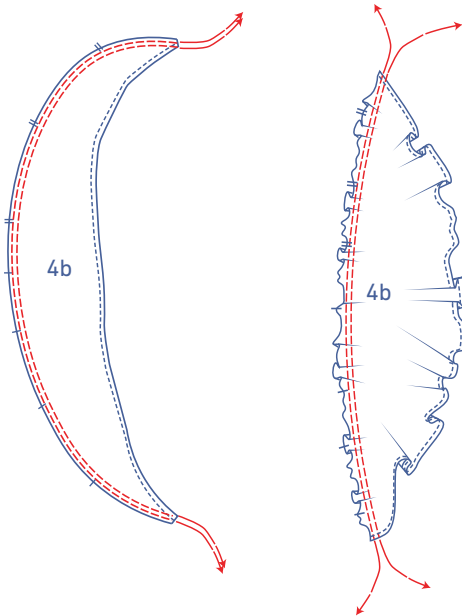
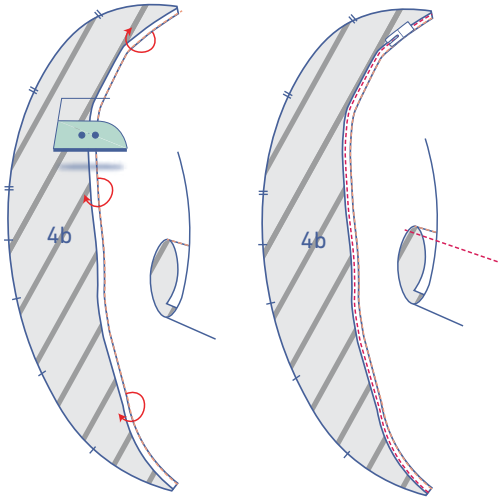
Stitch at 0.5 cm from the unnotched raw edge.



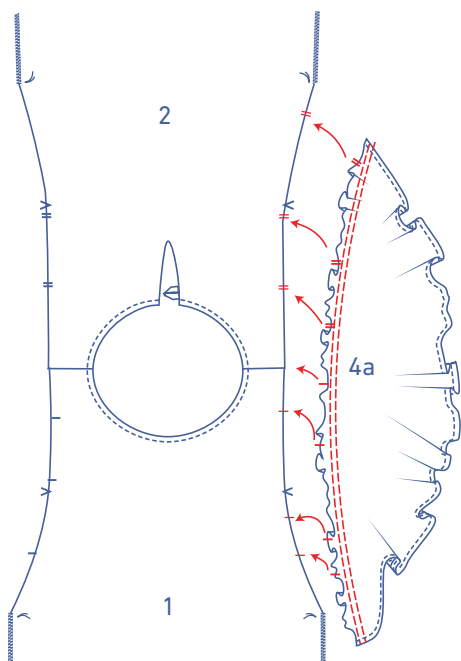
Press the raw edge towards the wrong side along the previous stitching.



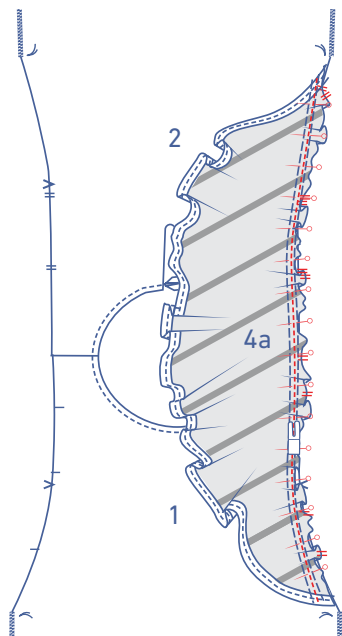
Fold over again and sew into place right next to the edge.



Use a long stitch at a low thread tension to sew 2 parallel rows of stitching along the notched raw edge. Leave a length of thread at the start and end of the stitching. Carefully tug the ends of the threads to gather the fabric.



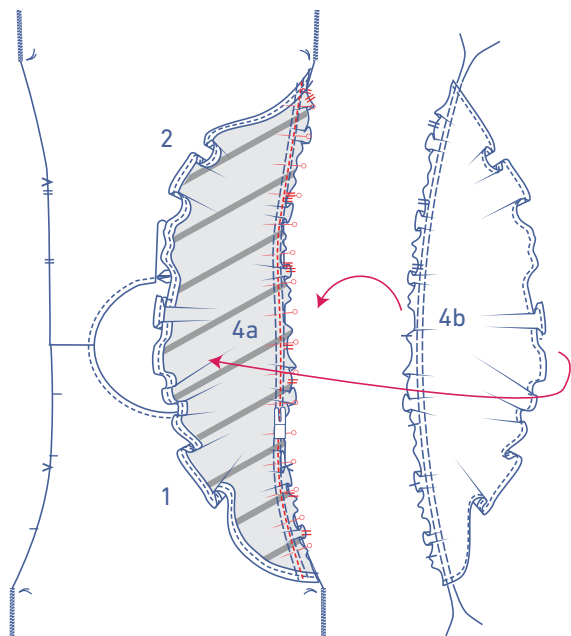
The highlighted notches in flounce 4a align with the notches in the front and back.



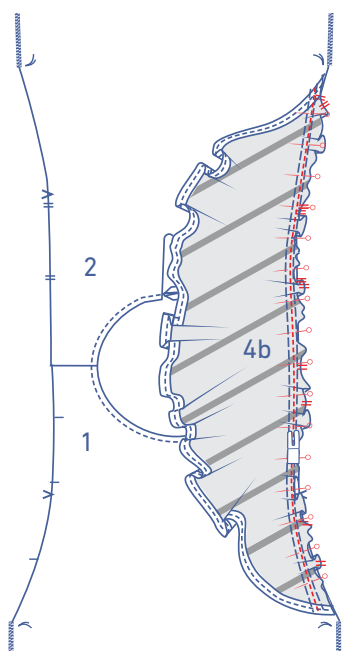
Pin flounce 4a to the front and back, right sides together. Make sure to distribute the gathers until the notches in the flounce and notches in the front and back match. Stitch into place.

#### OPTIONAL

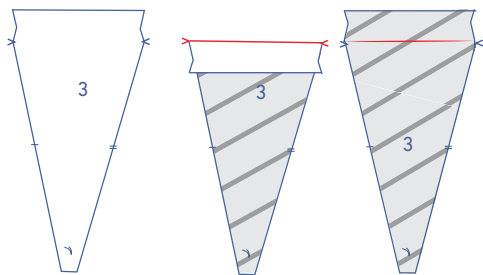
For the double-flounce version, place piece 4b on piece 4a.



Pin and sew into place, matching notches.

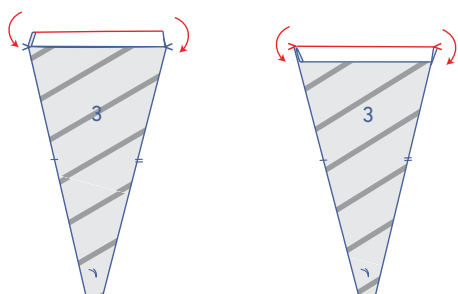




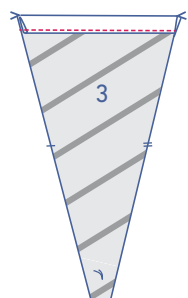


## 6

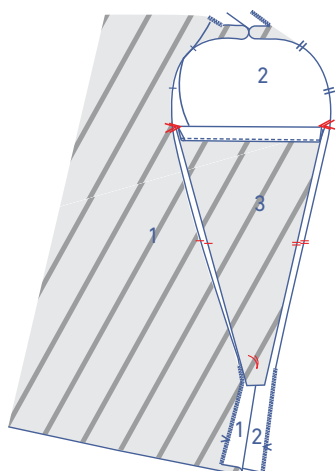
Press the top of the side piece (3) towards the wrong side at the V notches. Open back out.



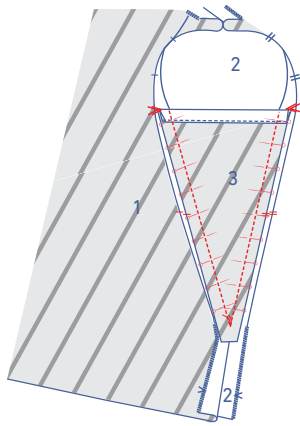
Fold the raw edge down to meet the pressed fold line and then fold down again.



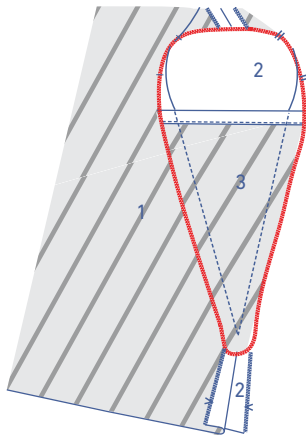
Edgestitch into place.



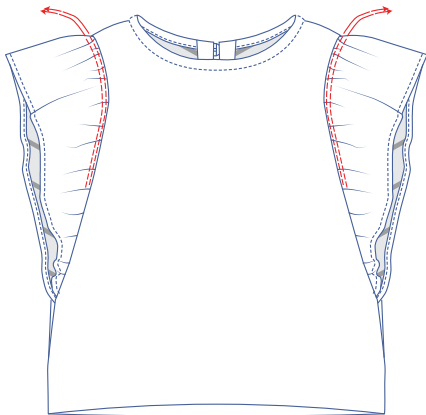
Pin the side piece to the front, back and flounce, making sure the marking threads and notches match. The finished top of the side piece should be even with the V notches.



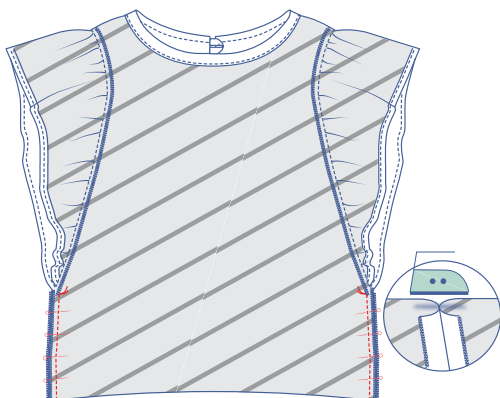
Stitch right up to the marking thread at the apex.



Finish the raw edges with overlock stitching.

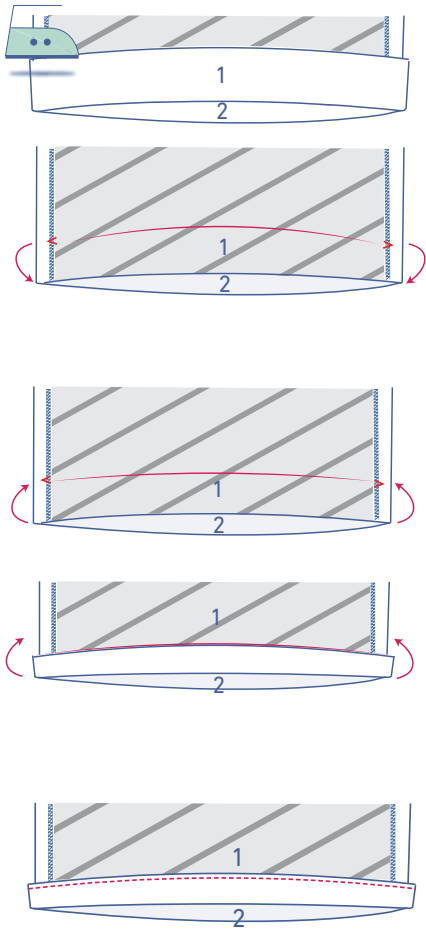


Remove the gathering threads.



**7**

Pin and sew the side seams, i.e. from the marking threads to the hem. Press the seam allowances open.

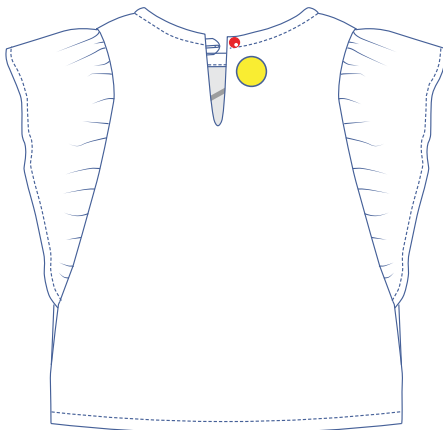


**8**

Press the hem allowance up at the V notches and then open back out.

Match the raw edge to the pressed fold line and fold up again.

Sew into place next to the edge.



**9**

Sew the button to the RB.