

Arlette by Fibre ⚡ood



Arlette by Fibre ⚡ood

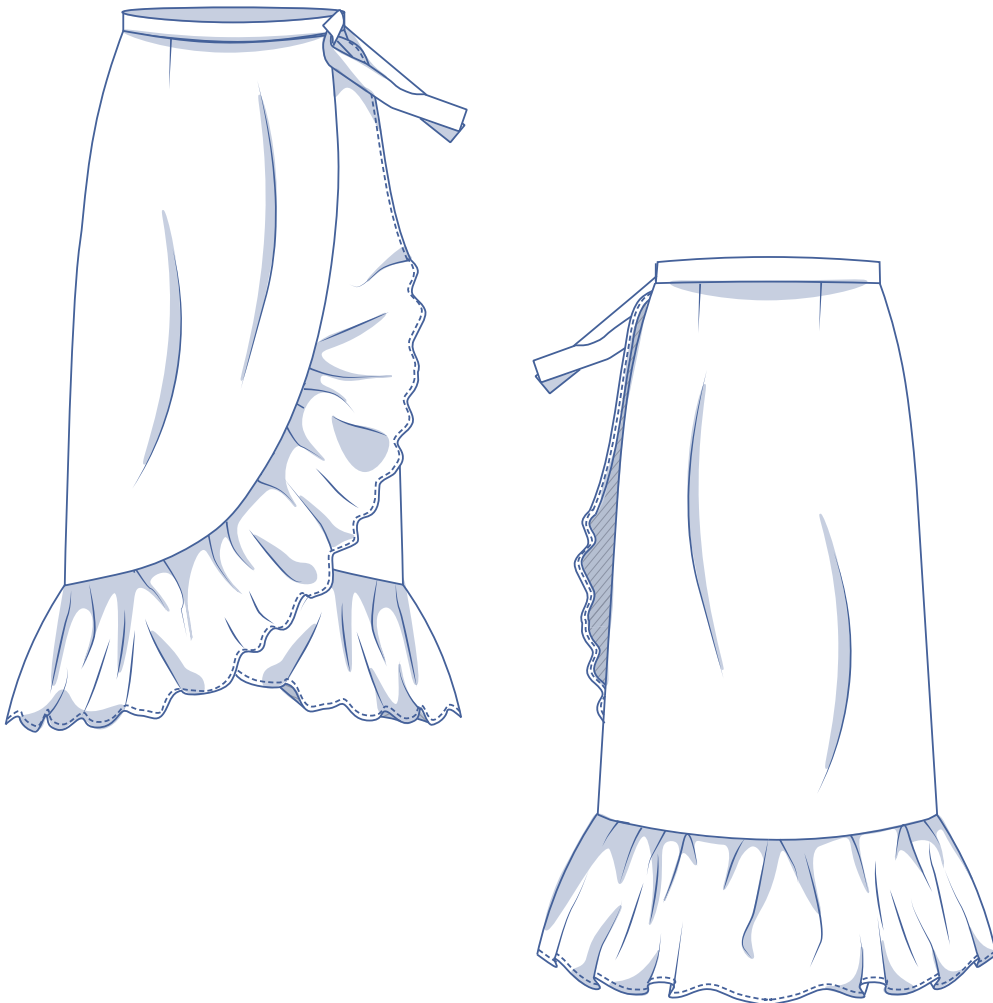
***✂✂



32 - 58

Take a gamble with the Arlette skirt this season because for skirts and dresses the tulip trend has made a smashing comeback. You'll see this trendy ruffled-item most often in its knee-length version, but anyone who prefers a shorter or longer model can alter the pattern. It's simple! From solids to floral prints and stripes, the Arlette skirt is the absolute top when paired with a loose, knitted jumper.

Just what you need on a chilly day!

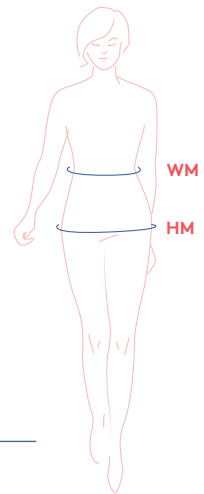


size chart

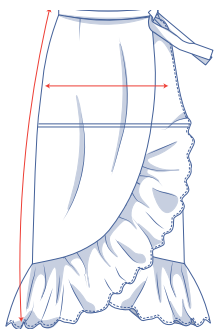
size (EU)	32	34	36	38	40	42	44	46	48	50	52	54	56	58
UK	4	6	8	10	12	14	16	18	20	22	24	26	28	30
US	0	2	4	6	8	10	12	14	16	18	20	22	24	26
WM (cm)	66	68	70	74	78	82	84	88	94.5	101	107.5	114	120.5	127
HM (cm)	86	90	94	97	100	103	106	109	115	120	125	130	135	140

Waist (WM): measure horizontally at the narrowest point of the body.

Hip (HM): measure horizontally around the widest part of the lower body.



measurements(in cm)



size	32	34	36	38	40	42	44	46	48	50	52	54	56	58
side length	66	66.5	66.75	67	67.25	67.5	70	70.25	73.5	73.75	74	74.5	74.75	75
1/2 waistline measurement	36.75	37.75	38.75	40.75	42.75	44.75	45.75	47.75	51	54.25	57.5	60.75	64	67.5
1/2 hip measurement	45.75	47.75	49.75	51.25	52.75	54.25	55.75	57.25	60.25	63.25	66.25	69.25	72.25	75.25

Compare the stated lengths to the measured or desired lengths. **Lengthen** or **shorten** the skirt by cutting the pattern pieces at the indicated double lines and then spreading the pattern pieces out X cm from each other or overlapping them, where necessary. Make sure that the CF and CB lines and the side seams are always straight.



IMPORTANT

Adjust the fabric to be used based on these alterations.

supplies



- Thread
- Iron-on interfacing: 30 cm
- Snap (Ø 2.1 cm): 2
- Fabric: see table

fabric used (in cm) F collection	32	34	36	38	40	42	44	46	48	50	52	54	56	58
floral print fabric fabric width 150 cm	180	180	180	180	195	200	200	205	260	265	265	270	270	270
orange fabric fabric width 142 cm	180	185	180	180	245	250	255	255	265	265	270	270	275	270

Comprehensive information about the fabrics in the Fibre Mood collection along with the accompanying fabric plans can be found [here](https://www.fibre mood.com/en/fabrics) or on www.fibre mood.com/en/fabrics.

fabric used (in cm)	32	34	36	38	40	42	44	46	48	50	52	54	56	58
standard fabric fabric width 140 cm	180	180	180	180	245	250	255	255	265	265	270	270	275	275

The corresponding fabric plan can be found on the last page.

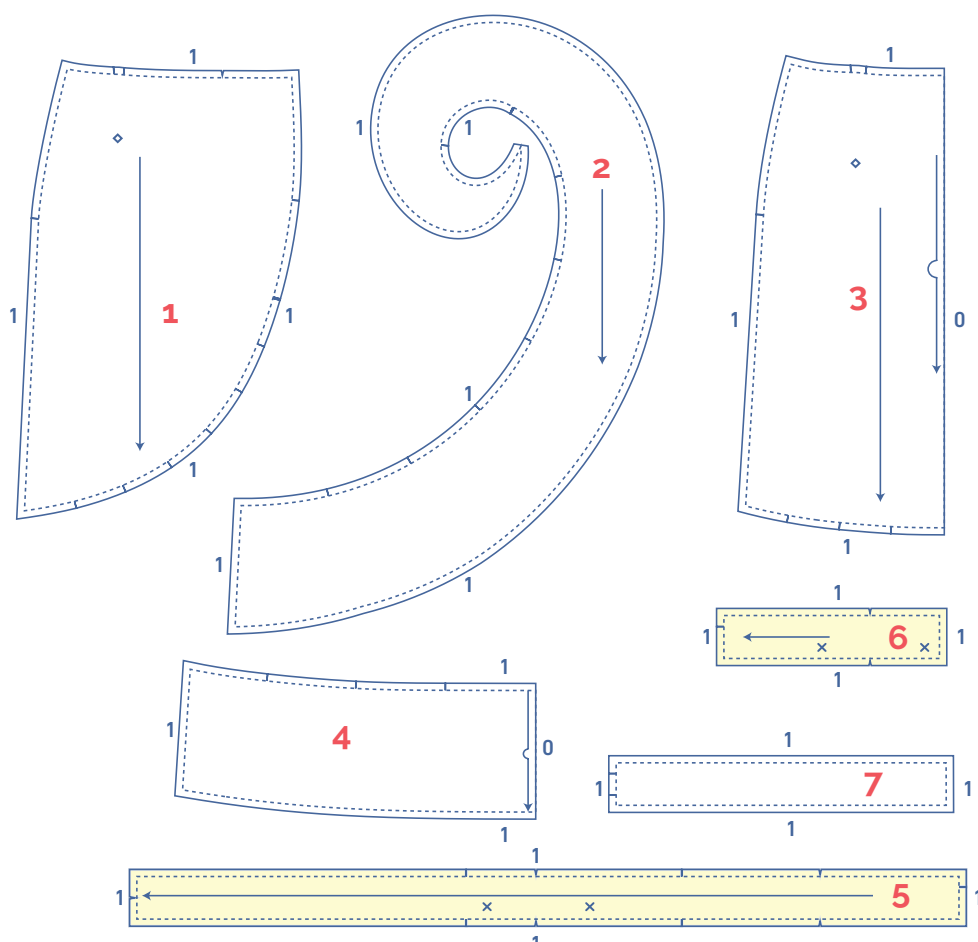
fabric advice



The fabric selection determines the look of your skirt. You could go for fabric with a fluid drape in a floral print, such as a crepe in viscose, wool or silk. The result will be a skirt that falls gently around the lower part of the body, giving it a ripple effect. If you go for a stiffer fabric, such as cotton, the skirt will be more structured and add additional volume. The result is a skirt that has a little more body of its own. The best option for straight body shapes is a stiff fabric, while women with more curves look loveliest in fabric with a fluid drape. Comprehensive information about the fabrics in the Fibre Mood collection can be found [here](https://www.fibremood.com/en/fabrics) or on www.fibremood.com/en/fabrics.

pattern pieces & seam allowances (in cm)

To sew the garment as described in the instructions, you must draw the illustrated seam allowances around the paper pattern pieces before cutting them out.



1. front: 2x
2. flounce front: 2x
3. back: 1x on fabric fold
4. flounce back: 1x on fabric fold
5. waistband A: 1x
6. waistband B: 1x
7. belt: 1x

IMPORTANT

The pieces highlighted in light yellow have iron-on interfacing attached to the wrong side.

Mark the following key points on the pattern piece using a basting thread (↯):

Position of the snaps: X

Dart/dart intake point: ◇

Mark key points on the outline of the pattern piece by cutting neatly through the pattern paper and fabric at I or II symbol and/or by cutting a small corner out of the fabric at a V symbol.

Cut a small corner (V notch) out of pieces that lie on the fabric fold (↷) to mark the middle of these pieces.

sewing instructions



The method used to finish sewing the garment depends on the fabric used.
The pieces are always sewn together with the right sides of the fabric matching exactly, unless stated otherwise.

F front

B back

RF right front

LF left front



right side



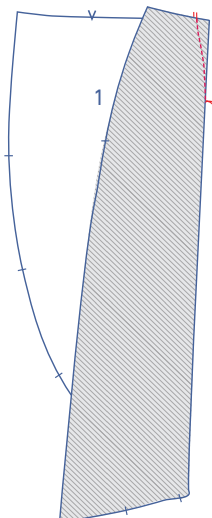
wrong side

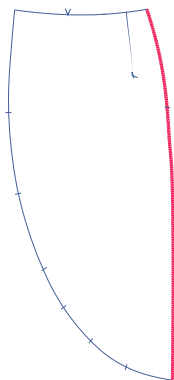


iron-on interfacing

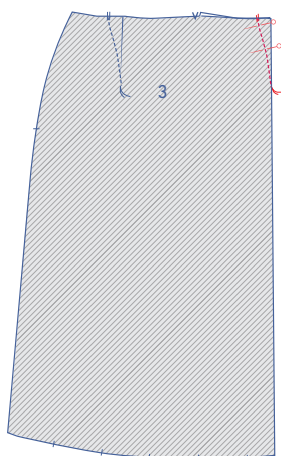
1

Fold the front (1) in half with the right side of the fabric turned inward. Precisely match the nicks at the waist seam. Sew the dart off towards the basting thread. Press the dart towards the CF.



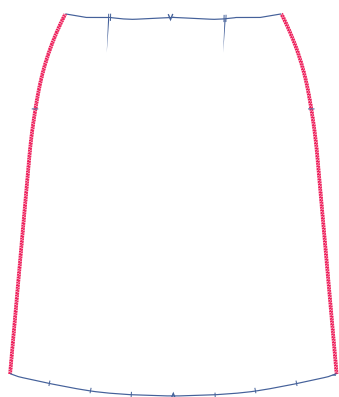


Finish the side seams using an overlock stitch.

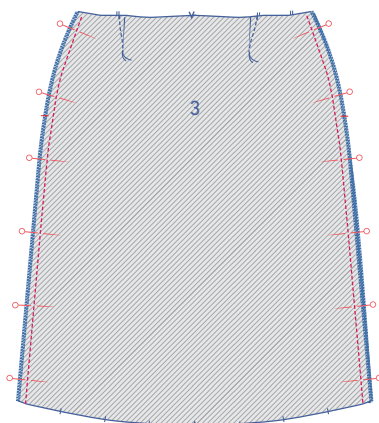


2

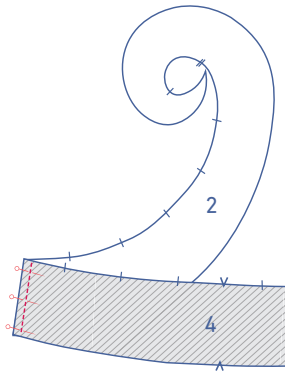
Fold the back (3) in half with the right side of the fabric turned inward. Precisely match the nicks at the waist seam. Sew the dart off towards the basting thread. Press the dart toward the CB.



Finish the side seams using an overlock stitch.

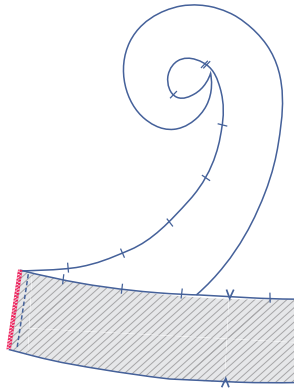


Pin and sew the side seams of the front and back. Press the seam allowance open.

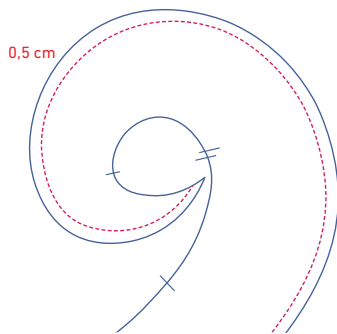


3

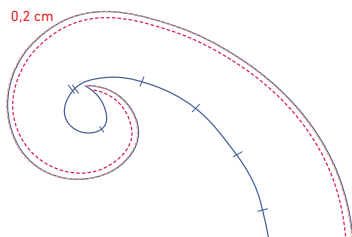
Pin and sew the short sides of the front (2) and back (4) flounce pieces.



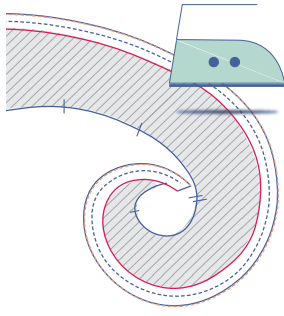
Finish the raw edges together using an overlock stitch.



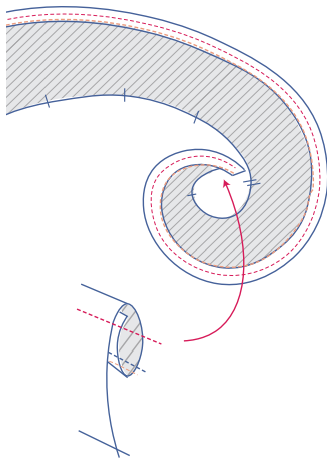
Finish the marked edge of the flounce off, like so: stitch at 0.5 cm from the raw edge that has not been marked.



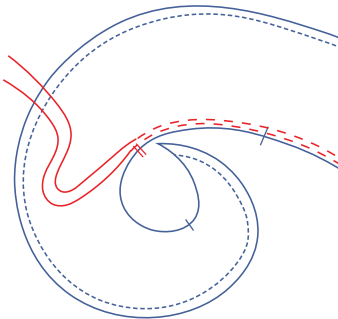
Next, press the edge up to the stitching and sew the pressed over seam allowance, this time sewing in place at 2 mm from the edge.



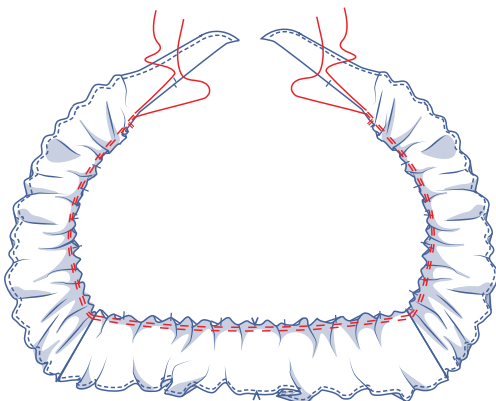
Snip the leftover seam off using appliqué scissors.



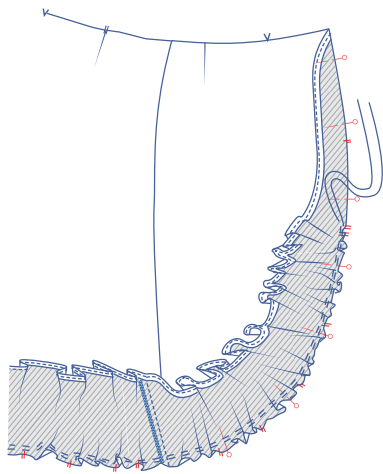
Fold the edge for the last time over to the wrong side and sew in place. Neatly press along the wrong side.



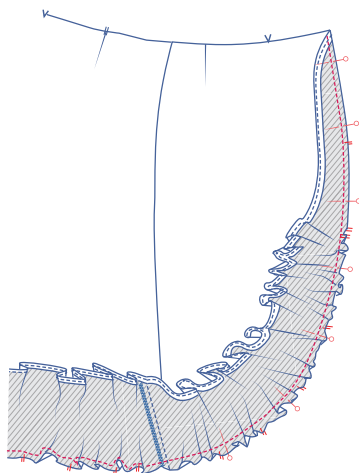
Use a long stitch length to stitch 2 parallel stitches along the marked edge.
Do this between the 2 double marks (there won't be any ruffles on the part of the flounce on the other side of the double markings).



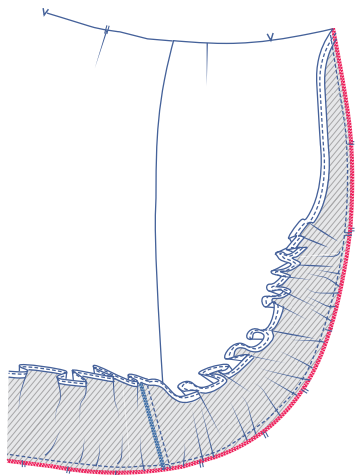
Carefully tug the ends of the threads to gather the fabric into ruffles.



Distribute the gathered fabric until the nicks line up with the nicks of the front and back and sew in place. Pin the smooth part of the flounce to skirt as well.



Sew in place and remove the gathering threads.



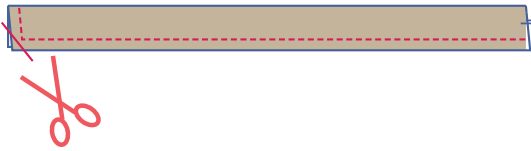
Finish both raw edges together using an overlock stitch.



4

Fold the belt (7) in half lengthwise and sew the unmarked long and short sides.

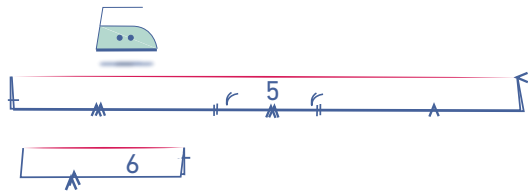




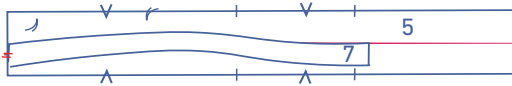
Trim the corner.



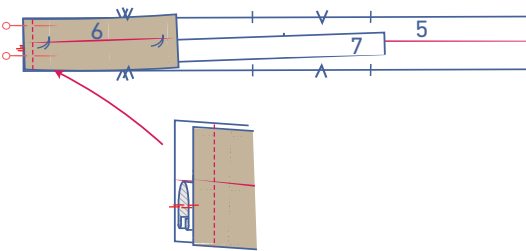
Turn the belt over to the right side and press nicely flat.



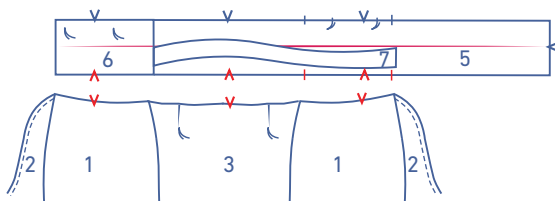
Press the waistband A (5) and waistband B (6) in half lengthwise to create a fold line on both pieces. Fold back open.



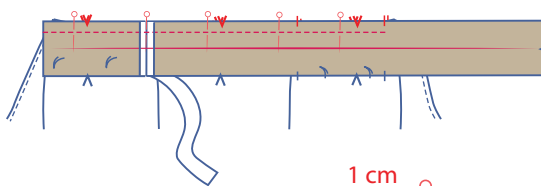
Lay the unfinished side of the belt with nicks (7) on the short side with the nick on waistband A (5). The nicks should line up precisely. The belt's fold line should face up.



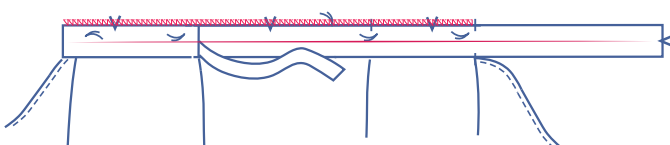
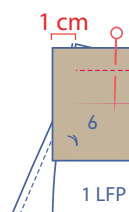
Lay the short side of waistband B (6) on top of this with the right side face down. This means that the belt should now lie between both waistbands. Sew in place.



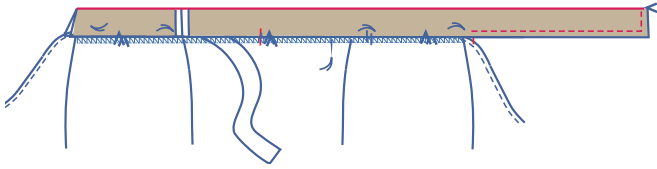
Pin the waistband to the skirt, making sure that the side seams and corresponding nicks match perfectly. The last nick on waistband A (5) should line up with the finished CF seam of the RF. Waistband B (6) should lie 1 cm past the finished CF seam of the LF.



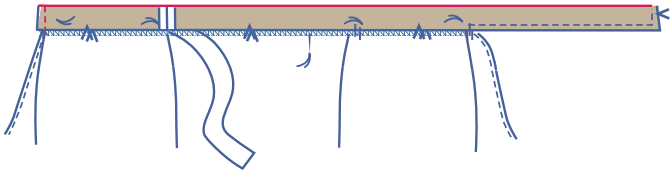
Sew in place up to the last nick. The shaped piece of the belt has not been stitched yet.



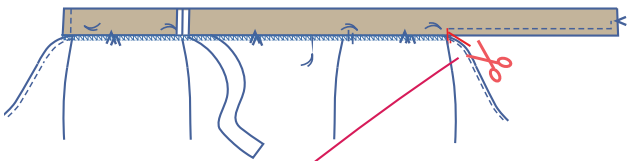
Fold the waistband all the way over so that the right side is visible. Use an overlock stitch to finish the side indicated up to the last nick.



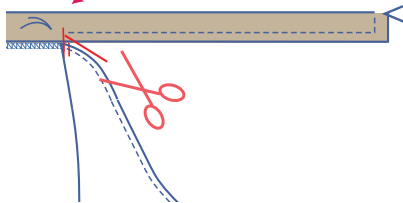
Fold the waistband + the shaped piece at the front of the belt at the LF side in half with the right side turned inward and sew the long and short sides together up to the nick.



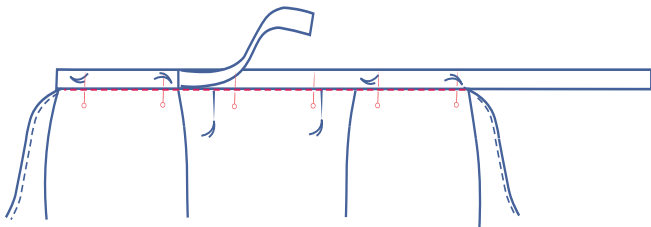
Fold the waistband at the LF side in half lengthwise along the pressed fold line with the right side turned inward. Sew the short side.



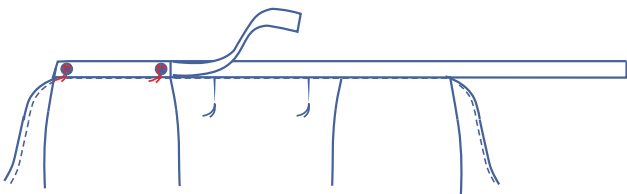
Snip into the seam allowance of the overlocked side of the waistband until right before the last stitch. The reason for doing this is that the seam allowances of the shaped belt end up turned in the same direction, i.e. at the top of the belt. The seam allowance of the overlocked side of the waistband needs to be at the bottom.



Trim the corner and turn inside out.

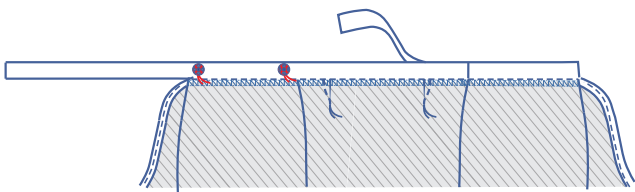


Fold the waistband along the pressed fold line with the right side turned outward. Pin in place along the right side of the work piece. Secure by stitching in the ditch.



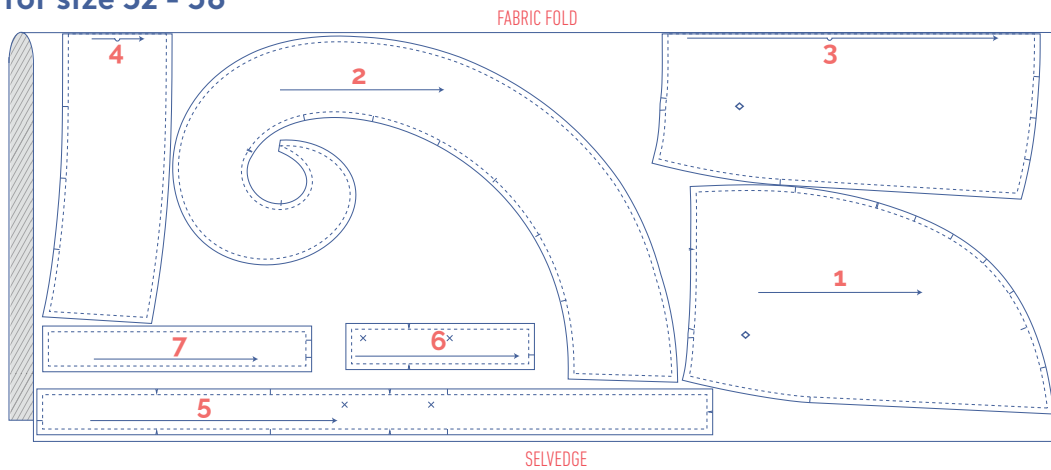
5

Sew the snaps on at the indicated places.



fabric plan for fabric 140 cm wide

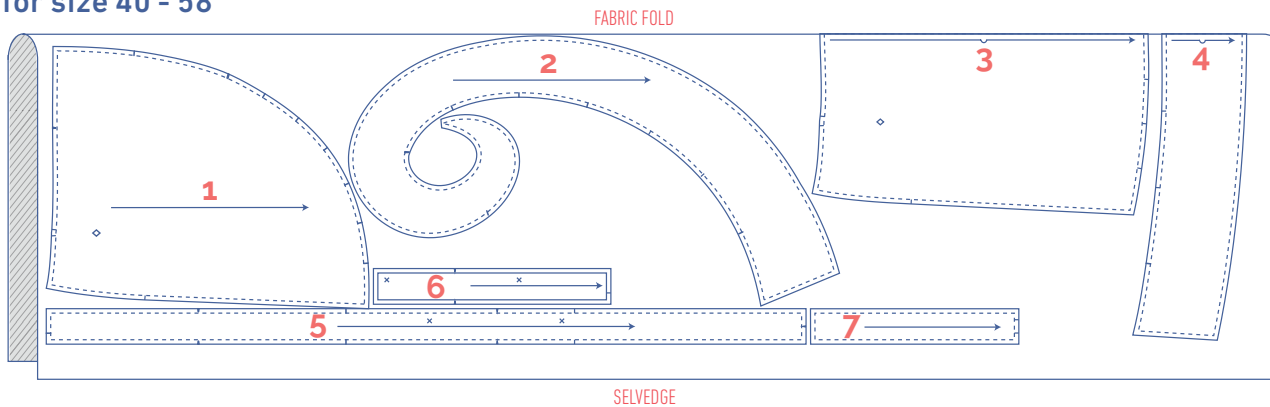
for size 32 - 38



KEEP IN MIND

You only need to cut pattern piece 5, 6 and 7 once.

for size 40 - 58



KEEP IN MIND

You only need to cut pattern piece 5, 6 and 7 once.