

# Suri by Fibre ⚡ood

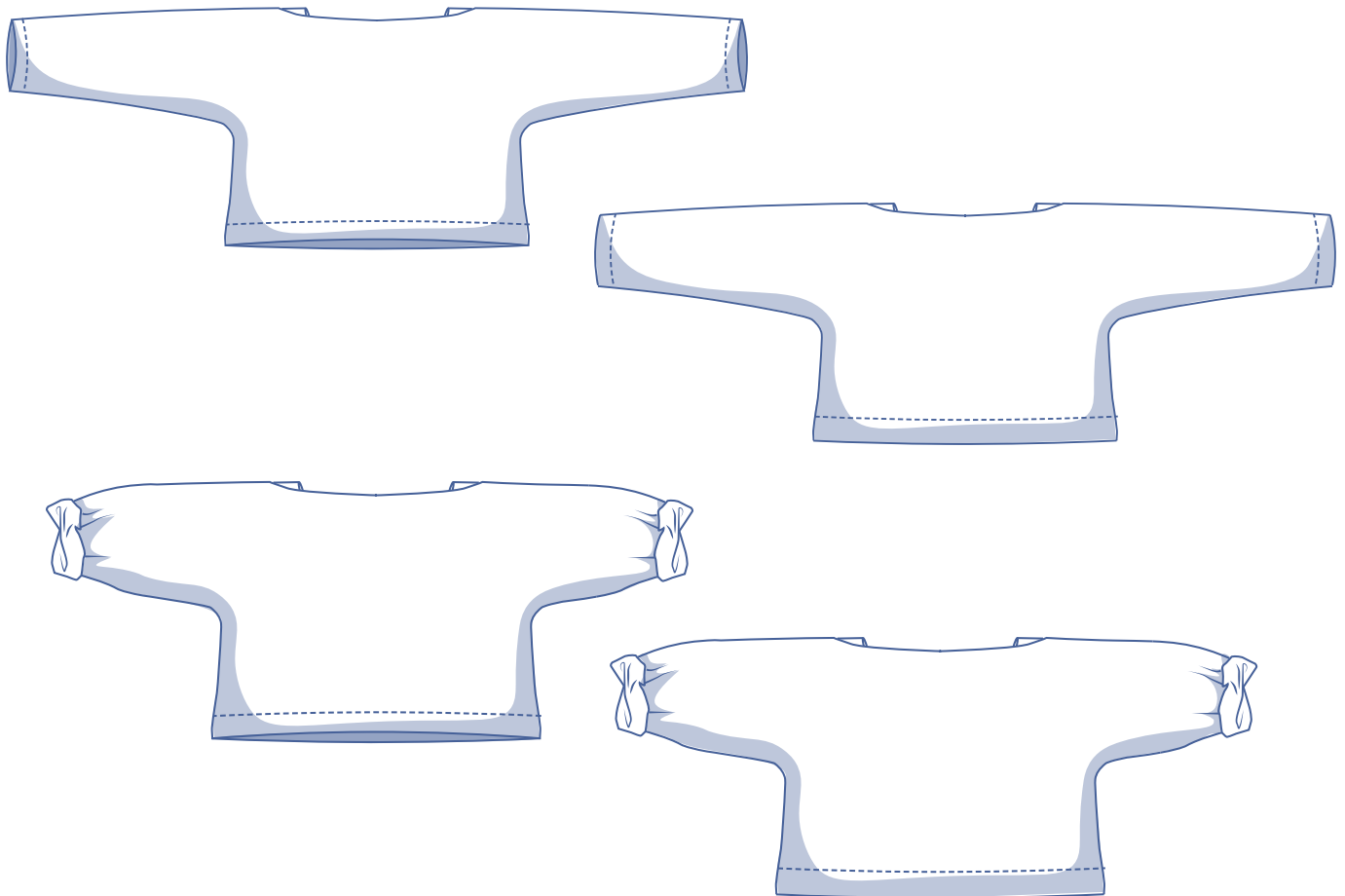


# Suri by Fibre Mood



**XS - XXXL**

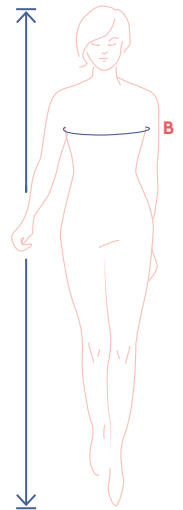
You can have this boxy bracelet-sleeved top done in the blink of an eye. All you need is the one large pattern piece, the inserts, and the facing pieces. That means quick and easy! The boat neck is super elegant and makes this the perfect top for combining with high-waisted skirts or trousers. Find out the ideal length for your figure [here](#).



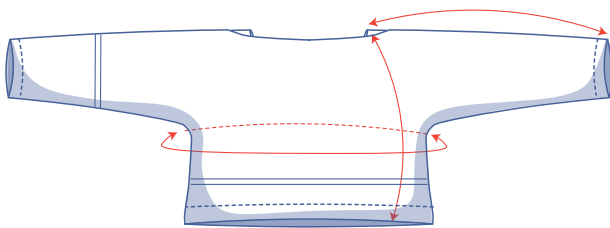
## size chart (in cm)

size	XS		S		M		L		XL		XXL		XXXL		
	4	6	8	10	12	14	16	18	20	22	24	26	28	30	32
body height	160	164	166	167	168	169	170	171	172	172	172	172	172	172	172
B (bust)	76	80	84	88	92	96	100	104	110	116	122	128	134	140	146

Choose your size based on your bust measurement. Pick the size that is the best match for your bust.



## pattern measurements (in cm)



— shorten or lengthen the pattern here

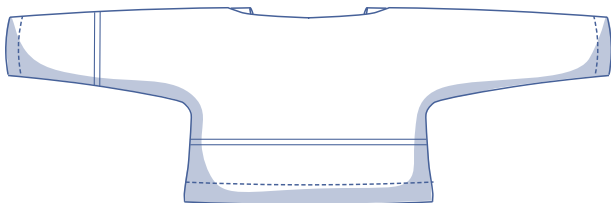
This chart's measurements are the pattern measurements based on the fabric type and serve as a reference. Ease has been added to the width measurements (in addition to the exact body measurements) for a more comfortable fit. Suri is designed to be oversized. Depending on the preferred cut, you could decide to go a size smaller or larger than the recommended size.

### IMPORTANT

This pattern design is boxy. Make sure to check the stated length against the length you want!

size	XS	S	M	L	XL	XXL	XXXL
length	44.5	45.5	46.75	47.75	50.5	52	53.5
sleeve length*	51	52	53	54.25	55.25	56.25	57.25
chest	101	109	117	125	135	147	159

\* Including shoulder length → This sleeve length is included for fabric 140 cm wide. If your fabric is not as wide, you will need to make shorter sleeves or rotate your pattern piece differently on the fabric.



Compare the stated lengths to the measured or desired lengths. **Lengthen** or **shorten** the top and/or the sleeves by cutting the pattern pieces at the indicated double lines. Then either increase the distance between the cut pieces by the desired amount (to lengthen), or overlap the pieces (to shorten). Make sure that the CF and CB lines and the side seams are always straight.



### IMPORTANT

Adjust the amount of fabric to be used based on these alterations.

## notions



- Thread
- Iron-on interfacing: max. 15 cm
- Fabric: see table

fabric		XS	S	M	L	XL	XXL	XXXL
fabric width 110 cm	cm	145	165	170	170	175	*	*
fabric width 140 cm	cm	115	115	145	150	150	155	155

The corresponding fabric layout can be found on page 6 of these sewing instructions.

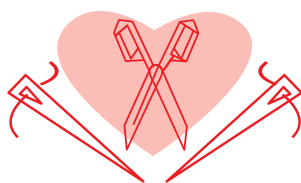
*\* No fabric requirement given as the pattern pieces will only fit on 110 cm wide fabric.*

## fabric advice



Suri looks sweet in all kinds of fabrics. Knits and wovens will both work. Chambray, Tencel, linen, interlock, and French terry are just a few. You can choose a structured fabric or something with a fluid drape depending on the look you're going for. Fabrics with a fluid drape, such as (viscose) crêpe or woven viscose won't stand out as much. If you want more structure and volume, consider making Suri in poplin.

# Proud to be #Sewista

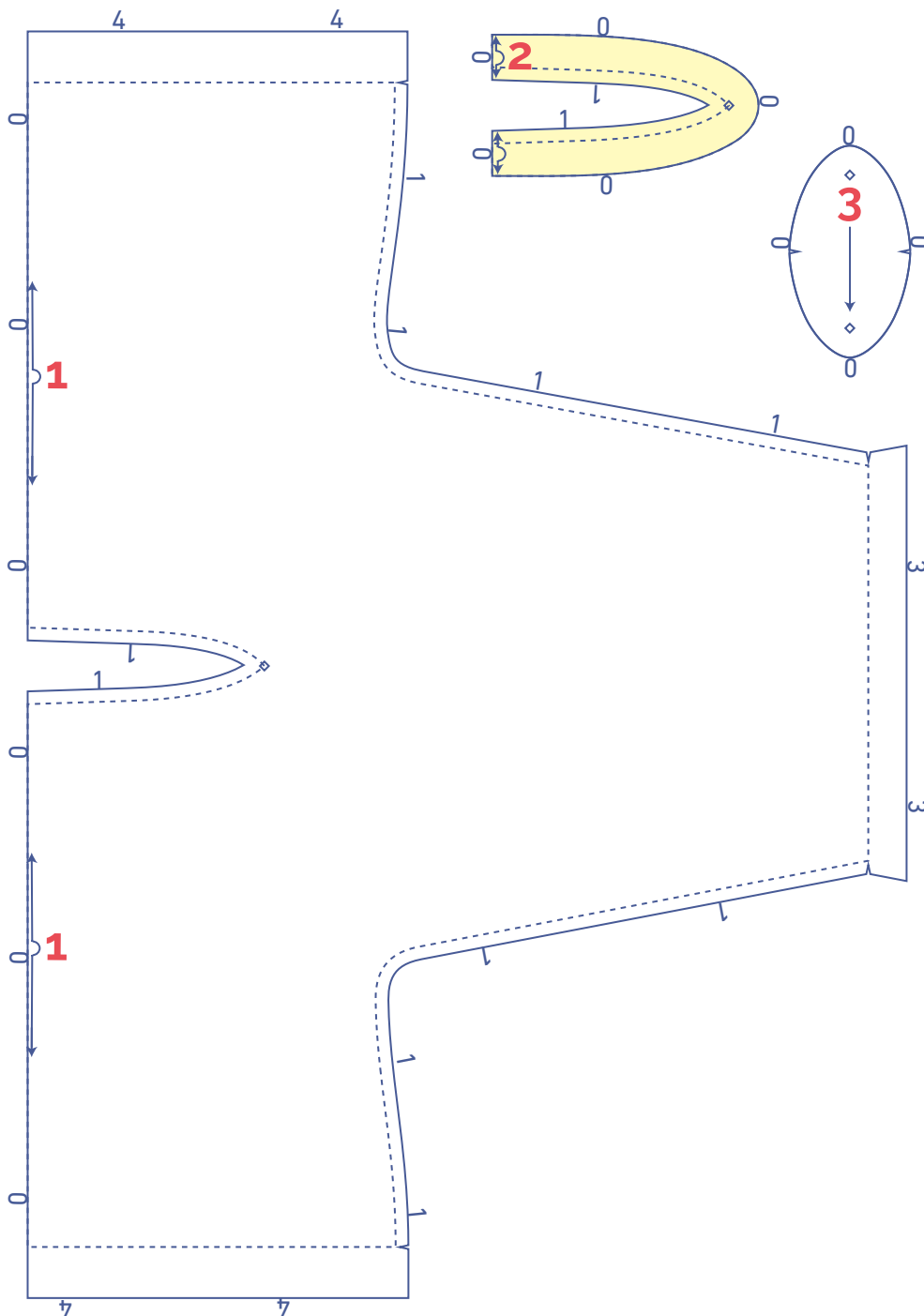


## pattern pieces & seam allowances (in cm)

To sew the garment as described in the instructions, draw the illustrated seam allowances around the paper pattern pieces before cutting them out. If you are using a PDF pattern, the pattern can be printed with or without seam allowance.




To find out more, watch the [video](#).

1. top: 1x on fabric fold
2. facing: 1x on the fabric fold
3. shoulder insert: 2x



### IMPORTANT

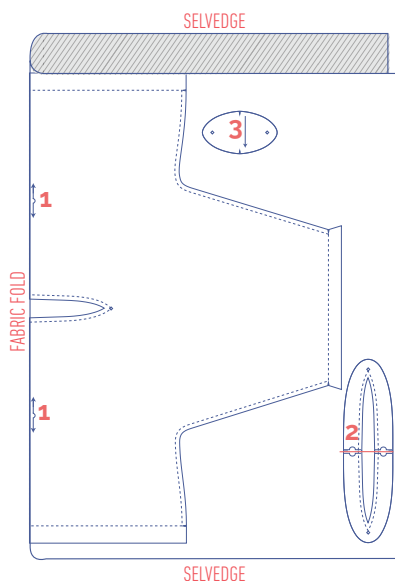
The pieces highlighted in light yellow have iron-on interfacing attached to the wrong side.

	material type
	fabric
	iron-on interfacing

## fabric layout – solid fabrics

### fabric width 110 cm

XS - XL



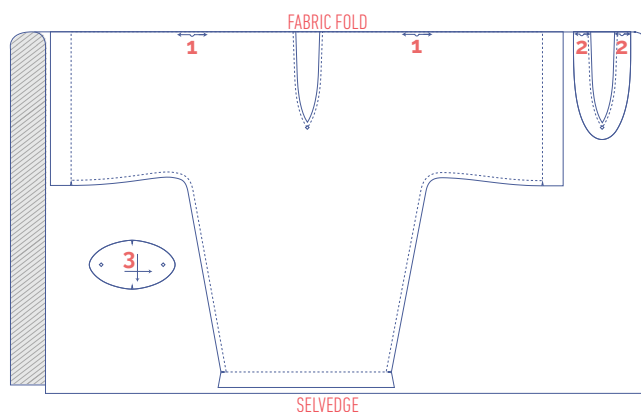
#### IMPORTANT

- To make the pattern with the sleeve length on the chart, pattern piece 1 needs to be cut on the cross grain.
- Pattern pieces for sizes XXL and XXXL do not fit on fabric that is 110 cm wide.

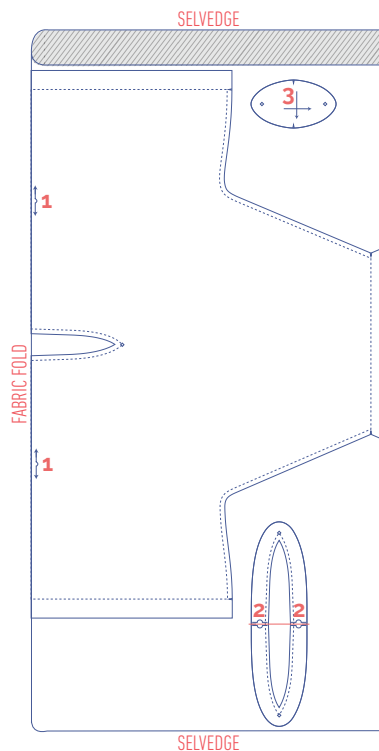
## fabric layout – solid fabrics

### fabric width 140 cm

XS - S



M - XXXL



#### IMPORTANT

To make the pattern with the sleeve length on the chart, pattern piece 1 needs to be cut on the cross grain.

## marking pattern pieces

	Notch the pattern paper and fabric at the following points		Mark the following points using marking thread
	single notch		centre point
	double notch		
V	V notch		

# sewing instructions



The method used to finish the seams depends on the fabric used.  
The pieces are always sewn together with the right sides of the fabric facing, unless stated otherwise.

FP front panel

B back

CF centre front

CB centre back



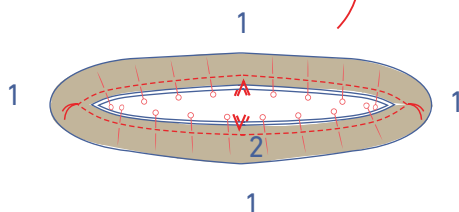
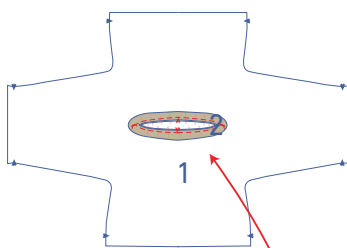
right side



wrong side

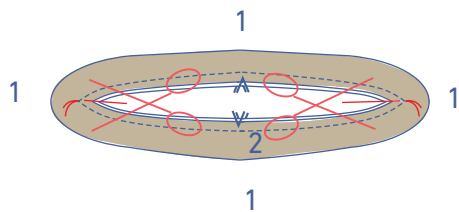


iron-on interfacing

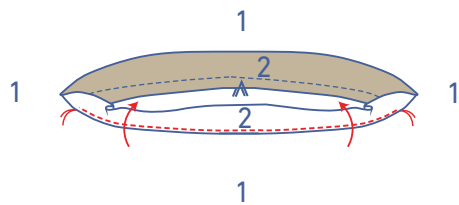


**1**

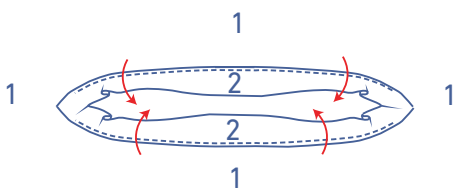
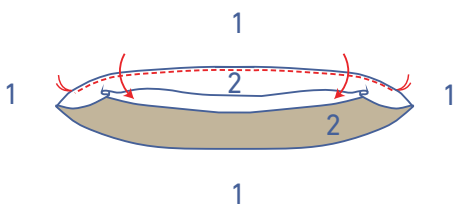
Place the facing (2) over the top (1), right sides together. Pin and sew the neckline. Stitch all the way around the neck opening to the marking threads.



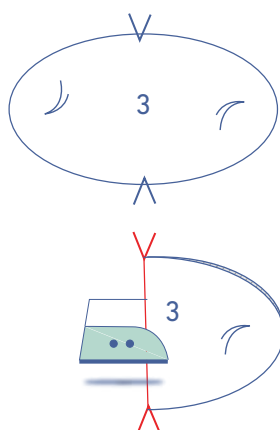
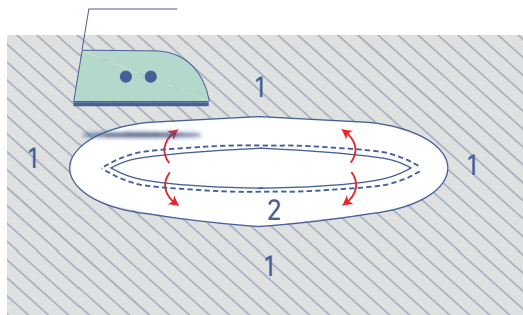
Snip into the seam allowance on both sides at the apex of the V until just before the marking thread.



Fold the facing over and stitch to the seam allowance underneath, sewing as far as possible towards the marking threads.



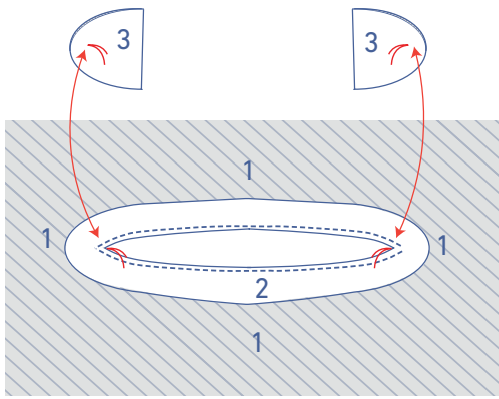
Turn the facing towards the wrong side and press neatly flat.



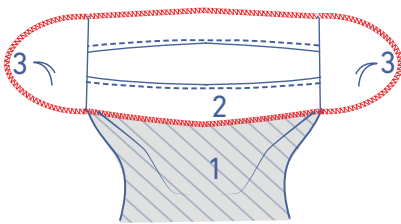
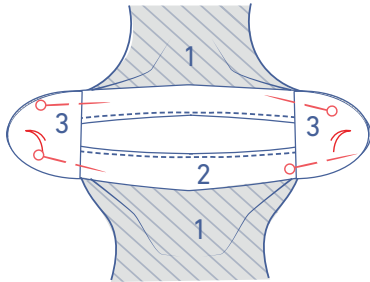
## 2

Press the shoulder insert (3) in half at the V notches with the wrong sides of the fabric facing.





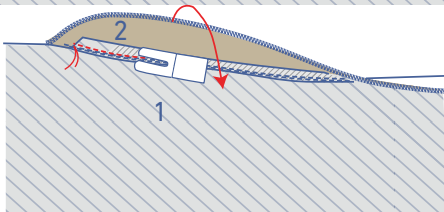
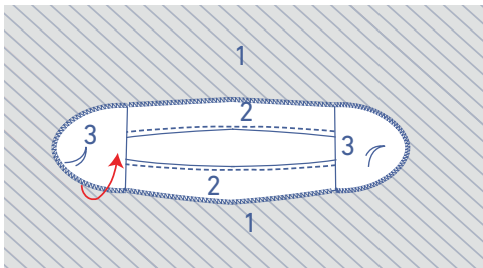
Place the folded shoulder insert on top of the right side of the facing as shown. Make sure the marking threads and raw edges match.



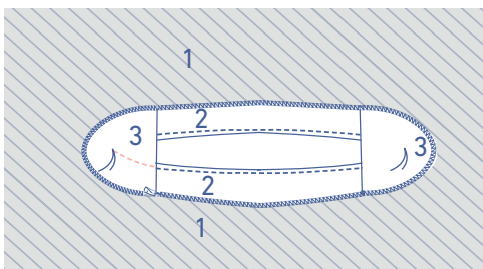
Finish the raw edges with overlock stitching.

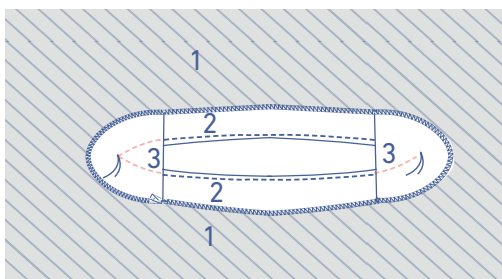
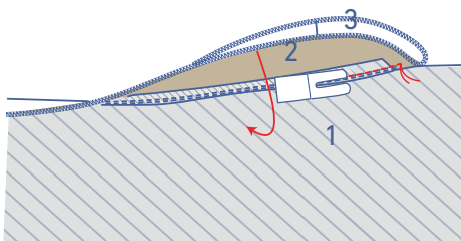
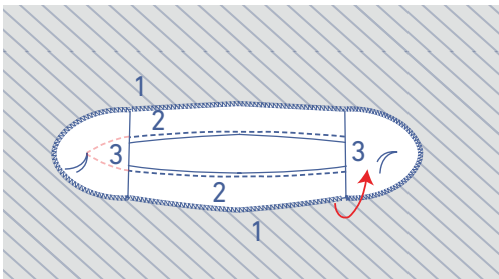
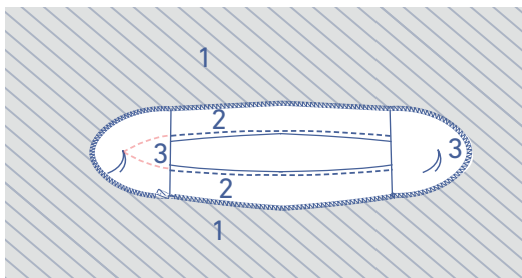
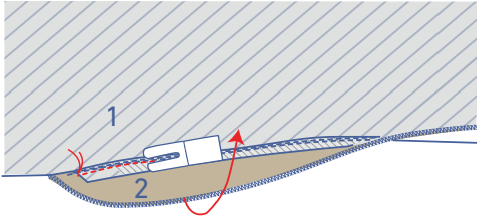
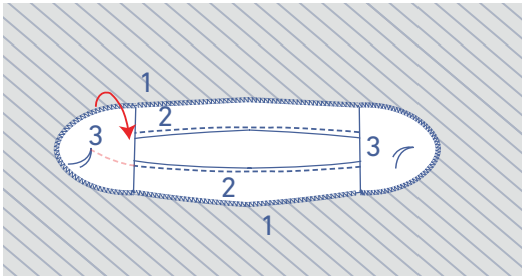
### 3

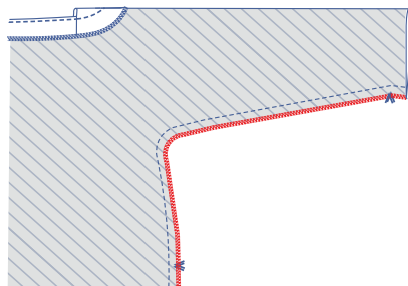
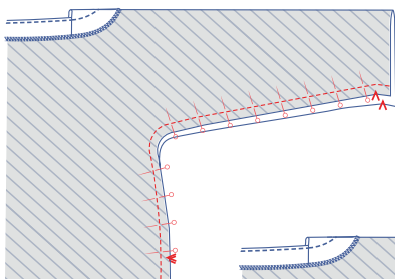
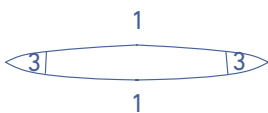
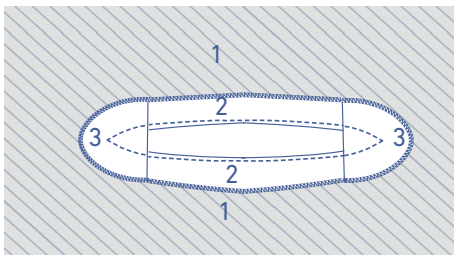
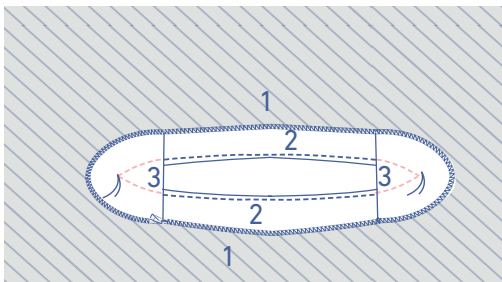
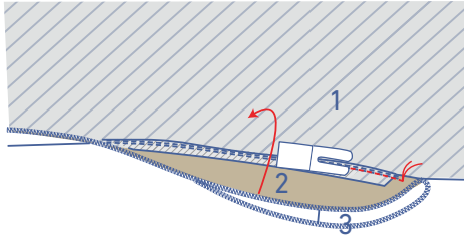
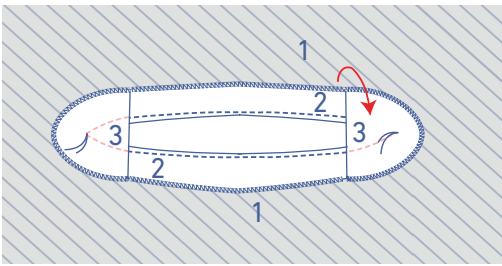
Now secure the shoulder insert. Lift up the facing + shoulder insert so you see the underside of the facing. Stitch along the indicated line up to the marking thread.



When you are done, fold the facing back down. Repeat these steps on both sides of the marking thread.

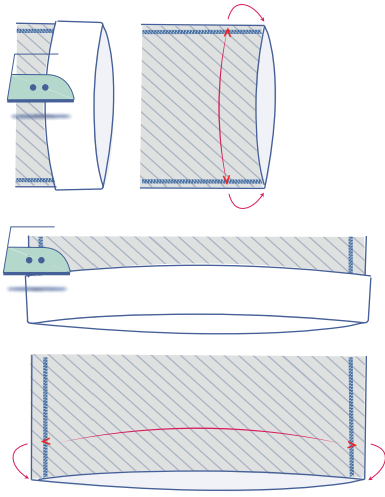






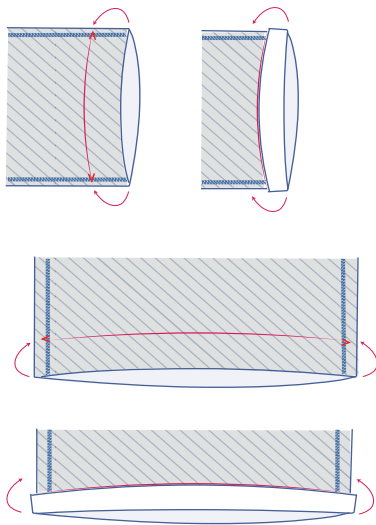
Pin and sew the side and underarm seams.

Finish the raw edges together with overlock stitching.

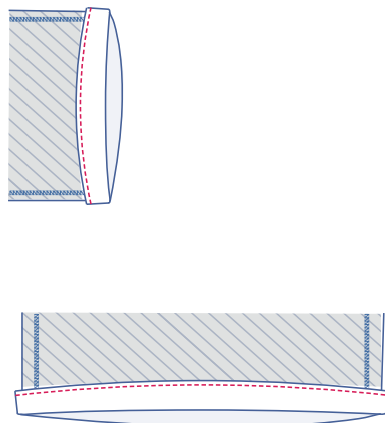


## 4

Press the hem allowance of the top and the sleeve towards the wrong side and open back out.



Fold the raw edge of each sleeve hem to the pressed fold line and then fold up once more.



Edge stitch into place.