

Debra by Fibre ⚡ood



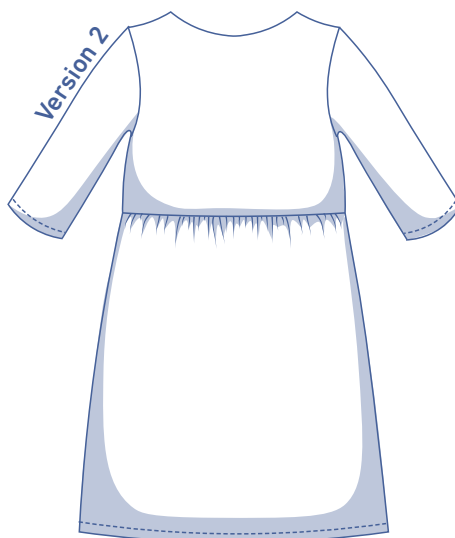
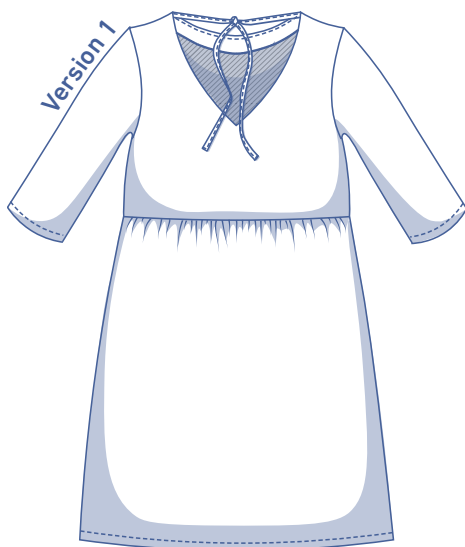
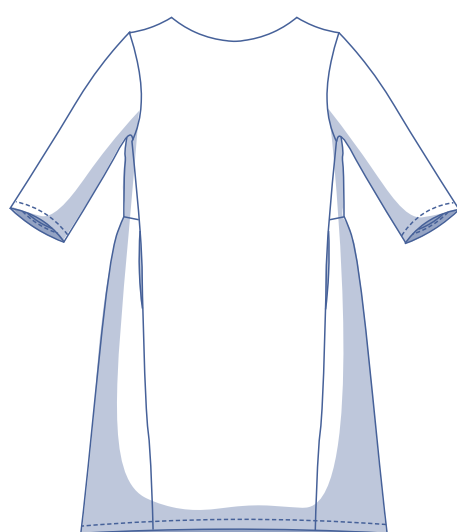
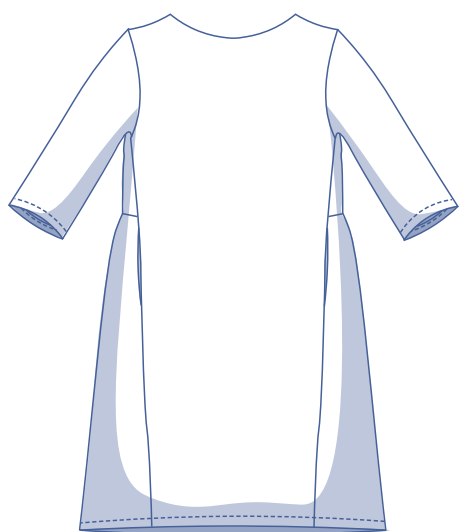
Debra by Fibre Mood



XS - XXXL

Fancy a new easy-peasy sewing project? The Debra dress is just the ticket with its simple straight cut, no zips or buttons, and three-quarter length sleeves. The jewel neck front has unique diagonal side seams that conceal super-handy pockets. The back has a line of discrete gathers and can either be made with a V or matching jewel neck.

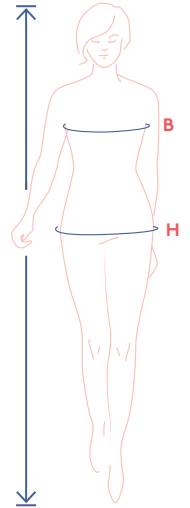
Want to make it shorter or longer? That's easy as A-B-C. Find out how on www.fibremood.com.



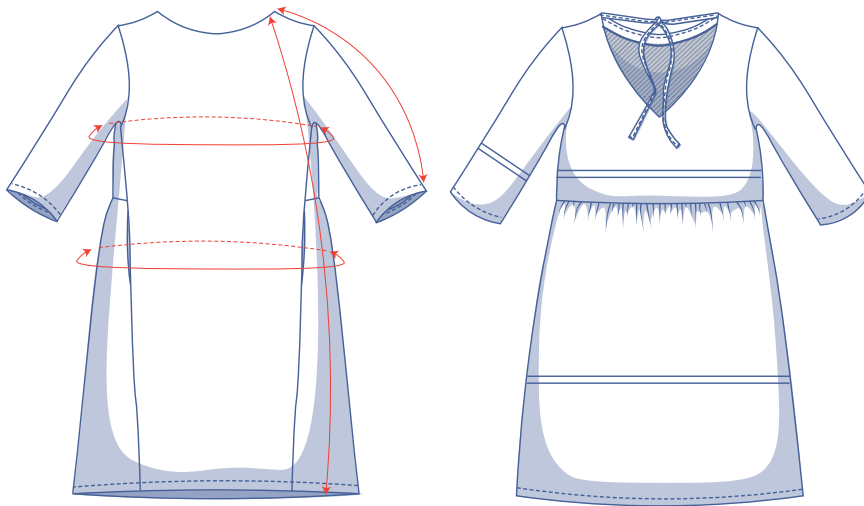
size chart (in cm)

size	XS		S		M		L		XL		XXL		XXXL		
	4	6	8	10	12	14	16	18	20	22	24	26	28	30	32
body height	160	164	166	167	168	169	170	171	172	172	172	172	172	172	172
B (bust)	76	80	84	88	92	96	100	104	110	116	122	128	134	140	146
H (hips)	86	90	94	97	100	103	106	109	115	120	125	130	135	140	145

Choose your size based on your **bust measurement**. If your hip measurements are wider than those in the size chart, check the hip measurements in the chart below to see if there's enough room or whether the pattern needs to be altered. It's easy to do. When tracing the pattern, simply trace from the line of one size instead of the other.



pattern measurements (in cm)



— shorten or lengthen the pattern here

This chart's measurements are the pattern measurements based on the fabric type and serve as a reference. Ease has been added to the width measurements (on top of the exact body measurements) for a more comfortable fit. Debra is designed to have a **loose cut**. Depending on the preferred cut, you could decide to go a size smaller or larger than the recommended size.

size	XS	S	M	L	XL	XXL	XXXL
length	96.5	97.5	98.75	100.75	103.5	106	107.5
sleeve length*	46.5	47.5	49.25	50.75	52.75	54.5	56
bust	87	95	103	111	121	133	145
hips**	118	128	138.25	148.5	160.75	175.75	190.75

* Including shoulder length.

** Including ruffle allowance.

Compare the stated lengths to the measured or desired lengths. **Lengthen** or **shorten** the dress and/or the sleeves by cutting the pattern pieces at the indicated double lines. Then either increase the distance between the cut pieces by the desired amount (to lengthen) or overlap the pieces (to shorten). Make sure that the CF and CB lines and the side seams are always straight.



IMPORTANT

Adjust the amount of fabric to be used based on these alterations.

notions



- Thread
- Iron-on interfacing: max. 30 cm
- Fabric: see table

fabric		XS	S	M	L	XL	XXL	XXXL
fabric width 110 cm	cm	235	240	305	320	355	390	410
fabric width 140 cm	cm	220	220	225	225	230	280	360

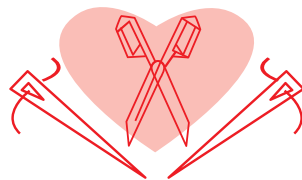
The corresponding fabric layout can be found on page 6 of these sewing instructions.

fabric advice



There are so many fabrics that would work well with the Debra dress. Both wovens and knits will work! Our suggestions? Poplin, chambray, denim, French terry, suede,...

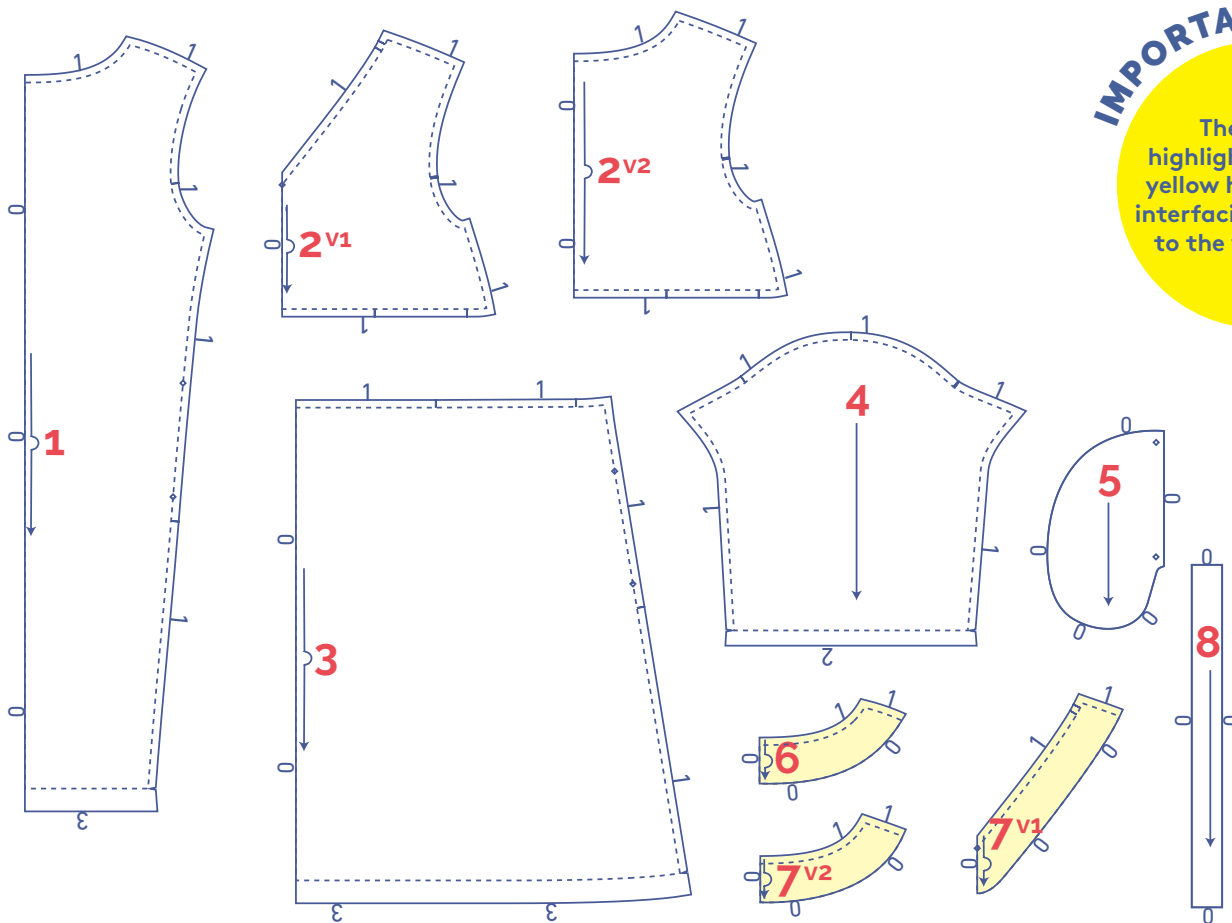
Proud to be #Sewista



pattern pieces & seam allowances (in cm)

To sew the garment as described in the instructions, draw the illustrated seam allowances around the paper pattern pieces before cutting them out. If you are using a PDF pattern, the pattern can be printed with or without seam allowance.

To find out more, watch the [video](#).



IMPORTANT

The pieces highlighted in light yellow have iron-on interfacing attached to the wrong side.

1. front: 1x on fabric fold
2. top piece back V1: 1x on fabric fold
top piece back V2: 1x on fabric fold
3. skirt back: 1x on fabric fold
4. sleeve: 2x
5. pocket: 4x
6. neckline facing front: 1x on fabric fold
7. neckline facing back V1: 1x on fabric fold
neckline facing back V2: 1x on fabric fold
8. tie: 2x

IMPORTANT

V1 = version 1. This version of the Debra dress features the V-neck at the back. To make this version, you need **pattern piece 2 - top piece back V1** and corresponding **pattern piece 7 - facing back V1**. You will also need **pattern piece 8** for the decorative tie. Do not cut out top piece back v2 (piece 2) or neckline facing back v2 (piece 7).

IMPORTANT

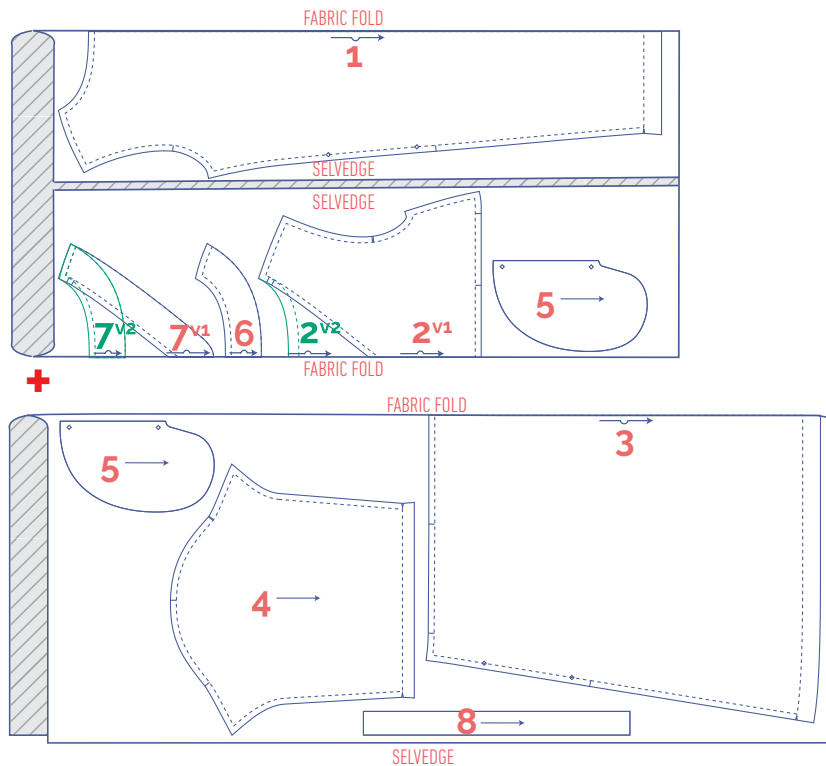
V2 = version 2. This version of the Debra dress features a jewel neck at the back. To make this version, you need **pattern piece 2 - top piece back V2** and corresponding **pattern piece 7 - facing back V2**. Do not cut out: top piece back v1 (piece 2); neckline facing back v1 (piece 7); decorative tie (piece 8).

?	material type
□	fabric
■	iron-on interfacing

fabric layout – solid fabrics

fabric width 110 cm

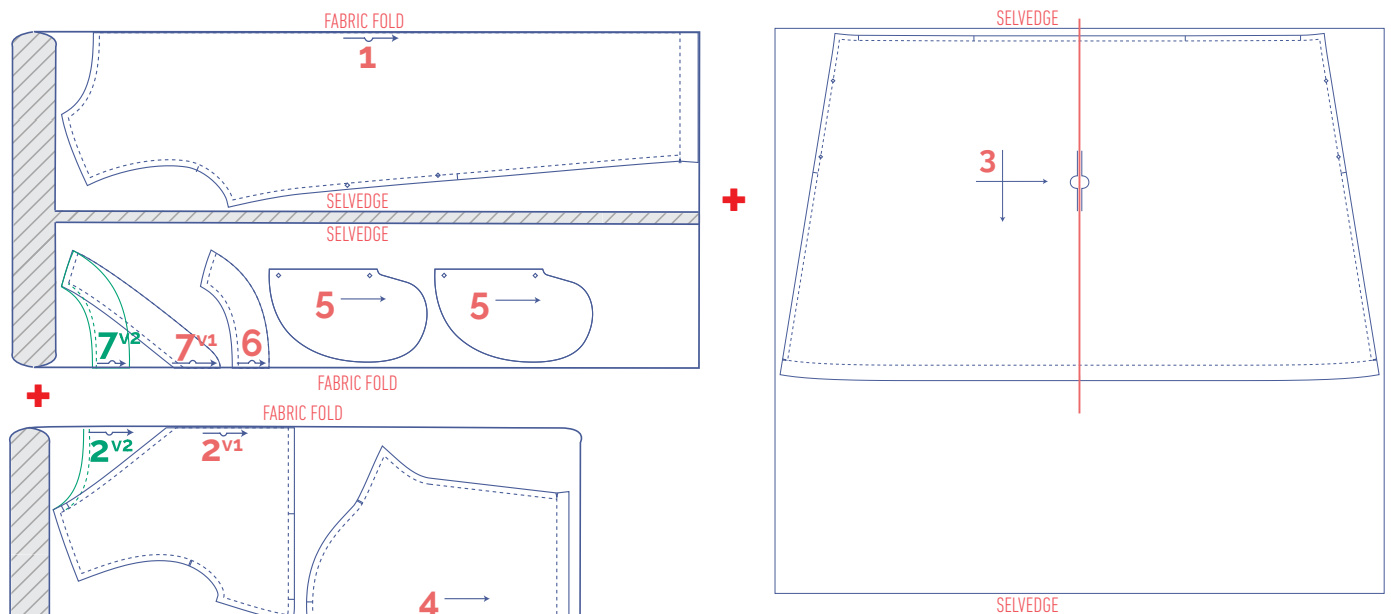
XS - S



IMPORTANT

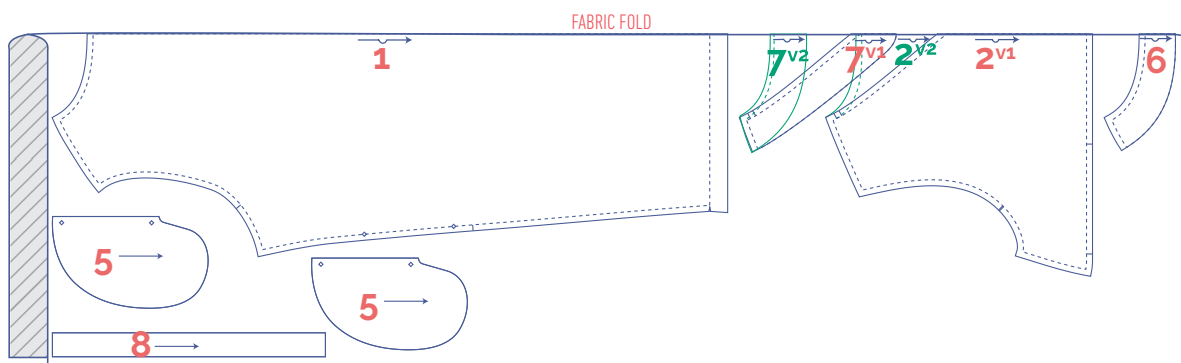
Pattern piece 8 is needed only for version 1.

M - L

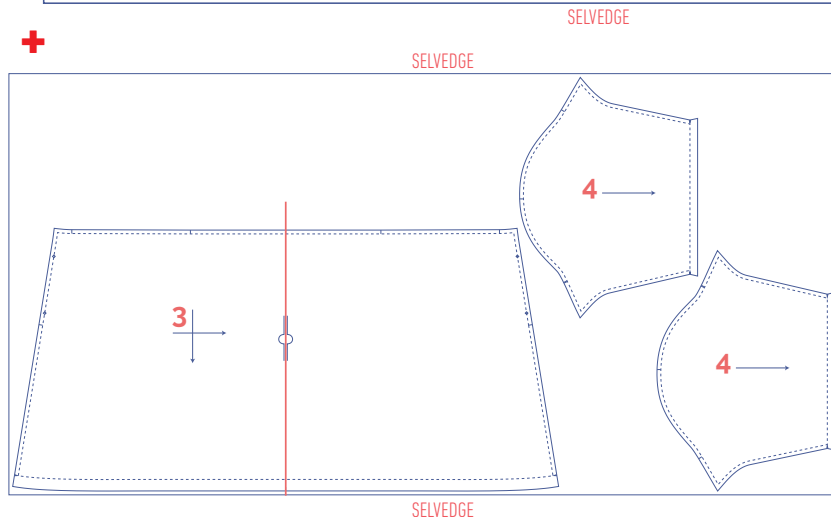


IMPORTANT

Pattern piece 3 has been rotated 90 degrees. Otherwise there is not enough room for the pattern piece on the fabric. Pattern piece 8 is needed only for version 1.



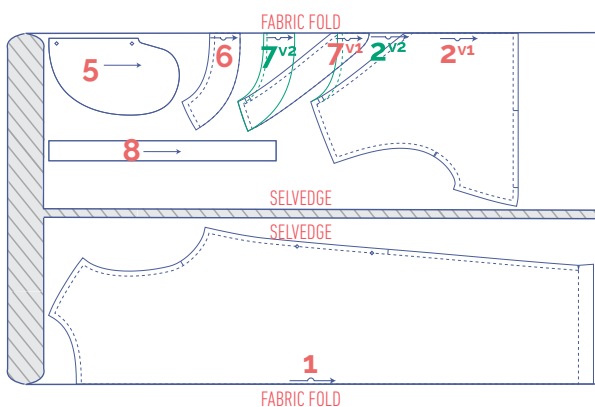
+



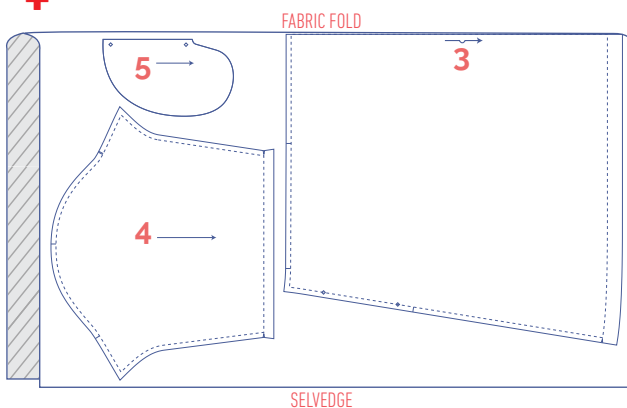
IMPORTANT

Pattern piece 3 has been rotated 90 degrees. Otherwise there is not enough room for the pattern piece on the fabric. Pattern piece 8 is needed only for version 1.

fabric layout – solid fabrics fabric width 140 cm



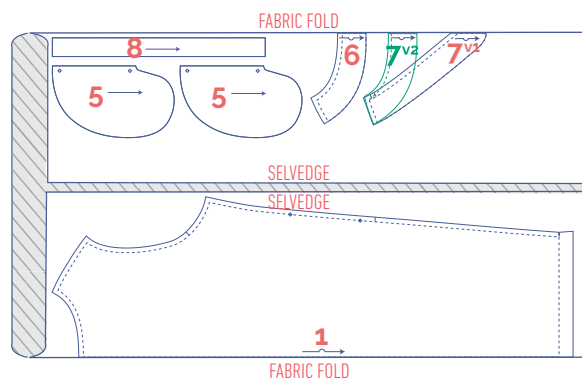
+



IMPORTANT

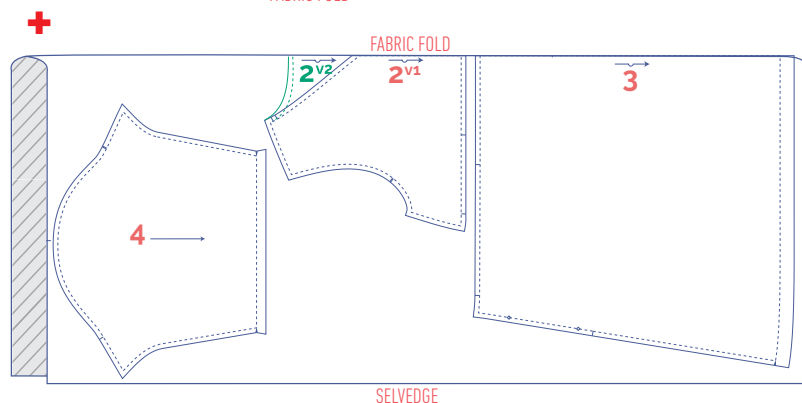
Pattern piece 8 is needed only for version 1.

XXL

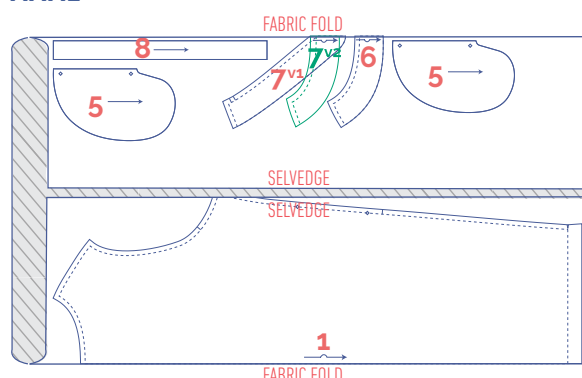


IMPORTANT

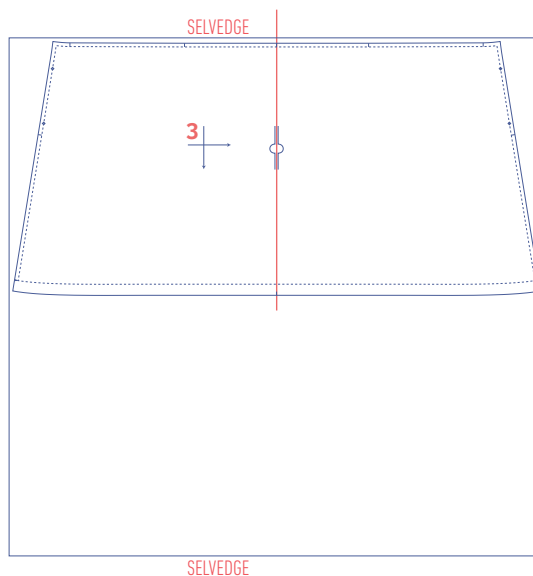
Pattern piece 8 is needed only for version 1.



XXXL

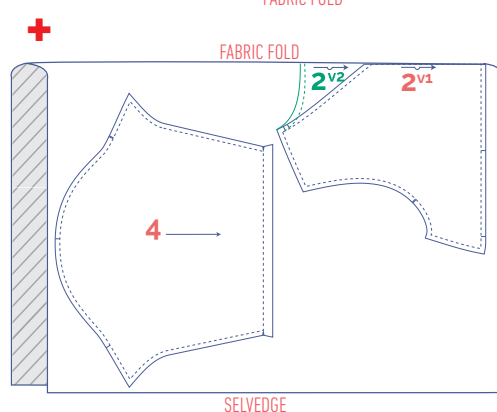


+



IMPORTANT

Pattern piece 3 has been rotated 90 degrees. Otherwise there is not enough room for the pattern piece on the fabric. Pattern piece 8 is needed only for version 1.



marking pattern pieces



Notch the pattern paper and fabric at the following point



single notch



double notch



V notch



Mark the following points using marking thread



centre point

sewing instructions



The method used to finish the seams depends on the fabric used.
The pieces are always sewn together with the right sides of the fabric facing, unless stated otherwise.

F front

B back

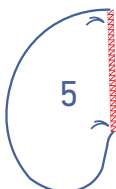
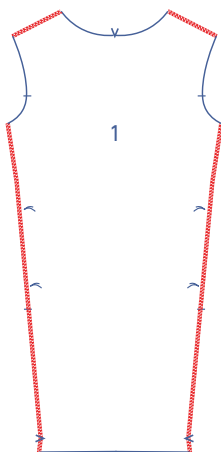
CF centre front

CB centre back

 right side

 wrong side

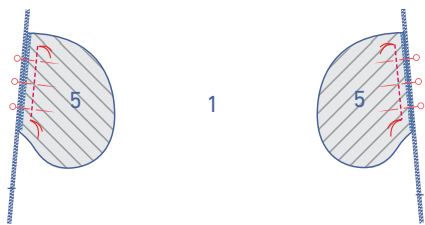
 iron-on interfacing



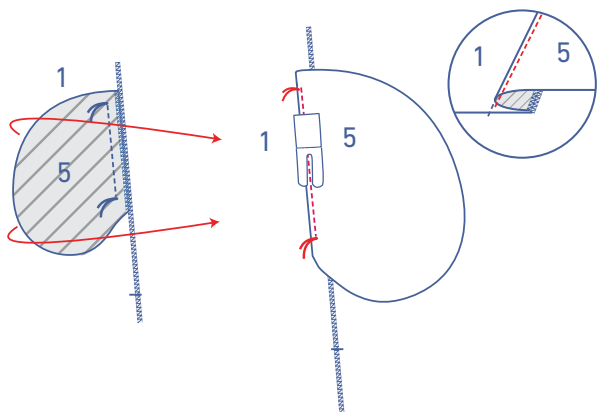
1

Finish the shoulder and side seams of the front (1) with overlock stitching.

Finish the straight raw edges of the pocket pieces (5) with overlock stitching.



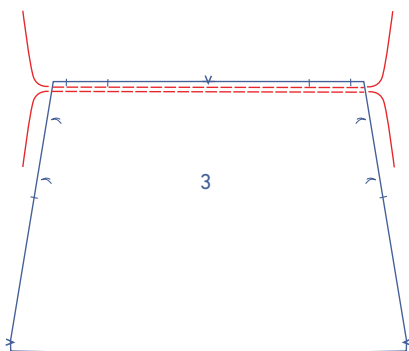
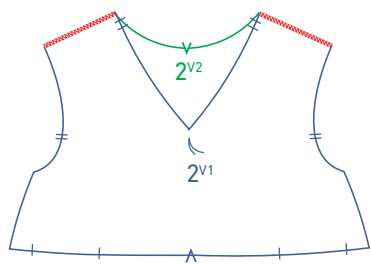
Pin the straight ends of 2 of the 4 pocket pieces to the side seam of the front, matching the marking threads. Sew into place between the marking threads.



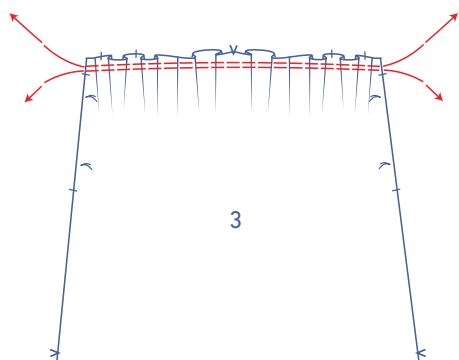
Fold the pocket pieces over and sew the pocket to the seam allowance underneath, between the marking threads and right next to the seam (= understitching).

2

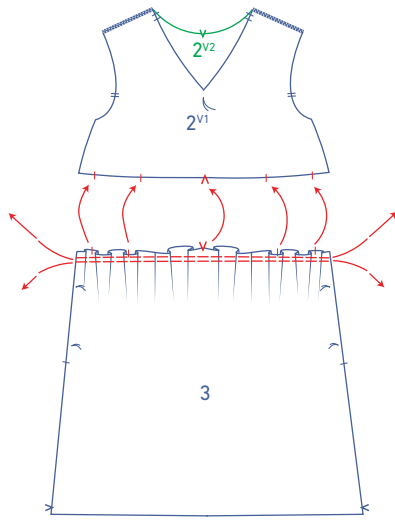
Finish the shoulder seams of the top back V1 or V2 (2) with overlock stitching.



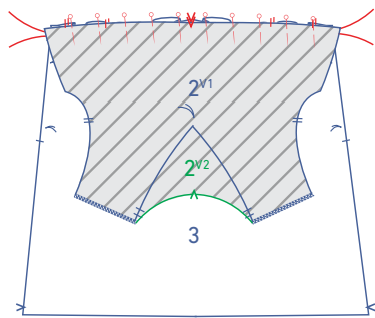
Sew 2 parallel rows of stitching at the top of the skirt back piece (3), using a long stitch at a low thread tension. Leave a length of thread at the start and end of the rows.



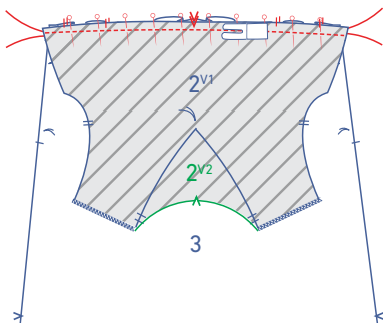
Carefully tug the ends of the threads to gather the fabric into ruffles.



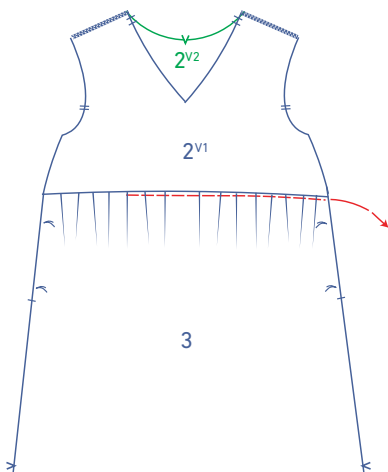
Distribute the ruffles so that the skirt notches match the notches in the top back V1 or V2.



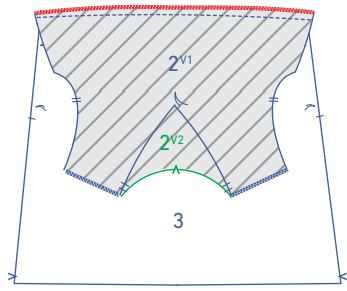
Pin the bottom of the top back to the skirt. Distribute the ruffles until the notches are matching.



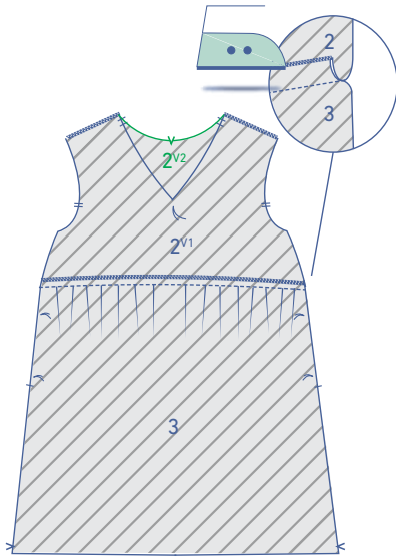
Sew into place.



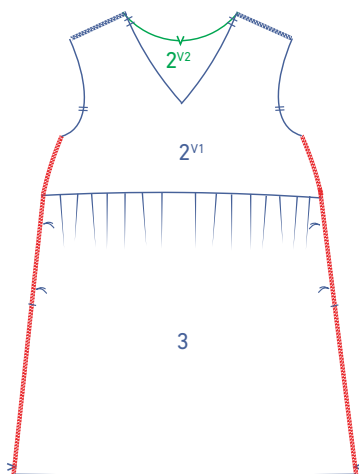
Next, remove the gathering threads.



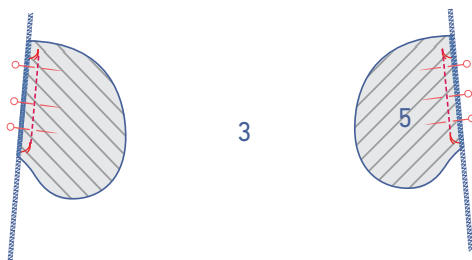
Finish the raw edges with overlock stitching.



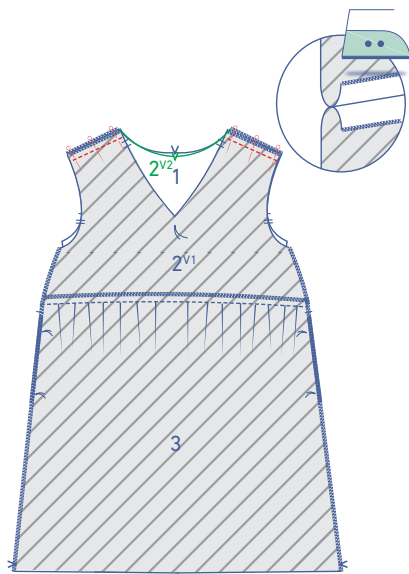
Press the seam allowance up.



Finish the side seams with overlock stitching.

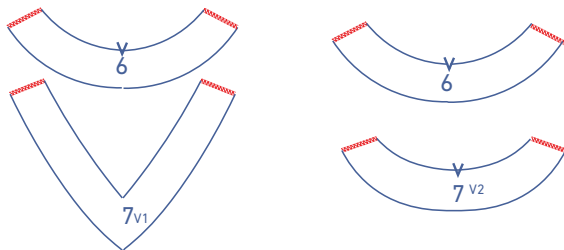


Pin the straight ends of the 2 remaining pocket pieces to the side seam of the back, matching the marking threads. Stitch into place between the marking threads.



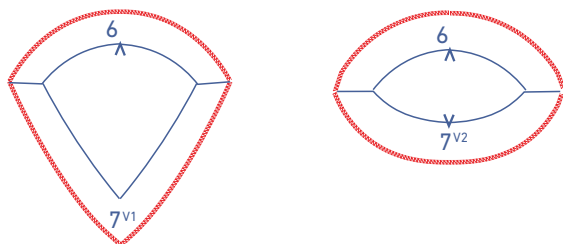
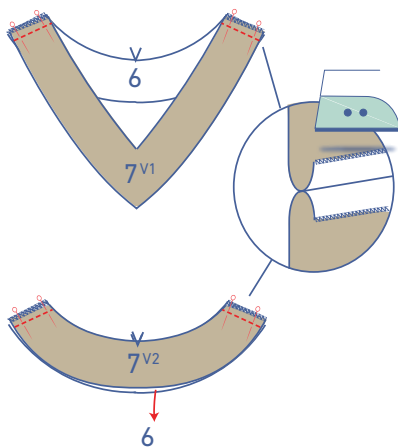
3

Pin the shoulder seams together and stitch to join. Press the seam allowances open.



4

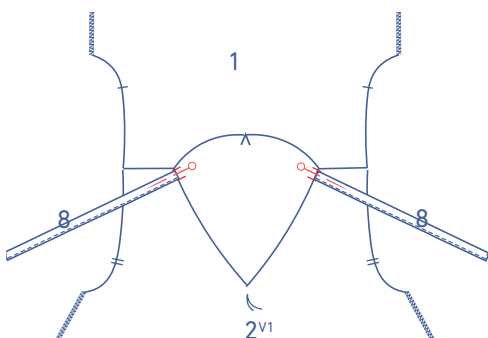
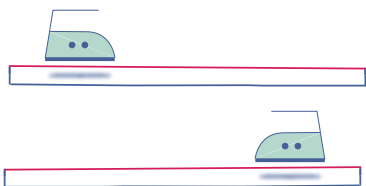
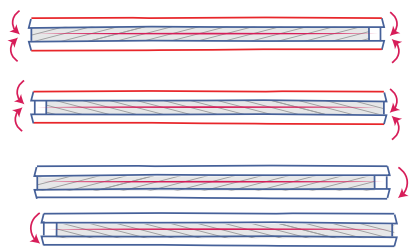
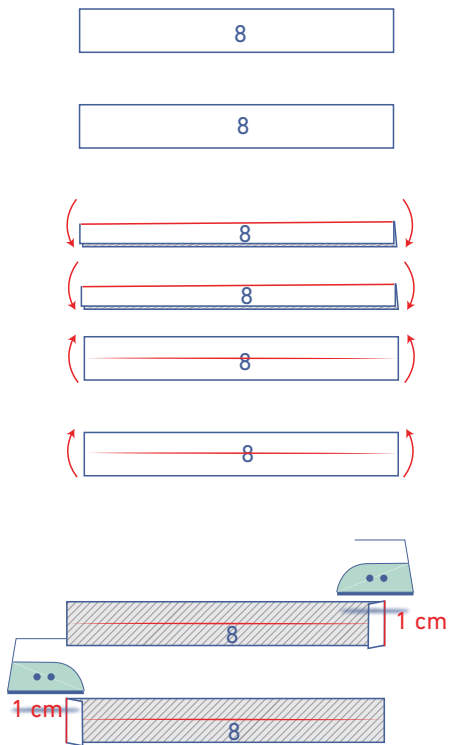
Finish the shoulder seams of the front facing (6) and back facing V1 or V2 (7) with overlock stitching.



Pin the shoulder seams of the facings together and stitch to join. Press the seam allowances open.

Finish the edges of the facing with overlock stitching as shown.

V1 (skip to page 16 for V2)



5

V1:

Press the ties (8) in half lengthwise with the wrong sides of the fabric facing. Open back out.

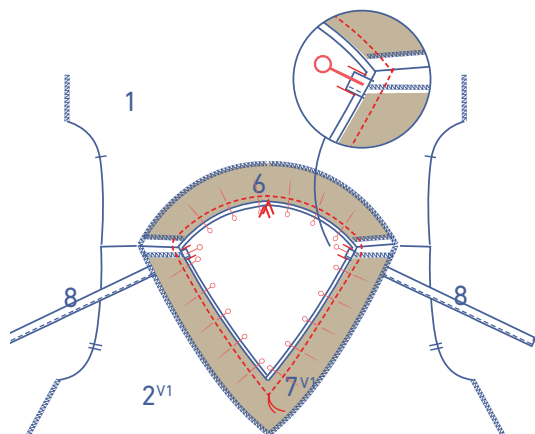
Press 1 short end of each tie 1 cm towards the wrong side.

Next, fold in the long edges to meet the pressed centre line. Press.

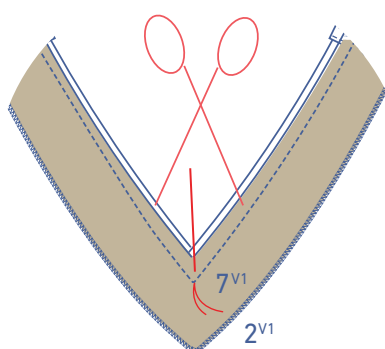
Fold in half lengthwise again and press.

Stitch the ends together where indicated, right next to the edge.

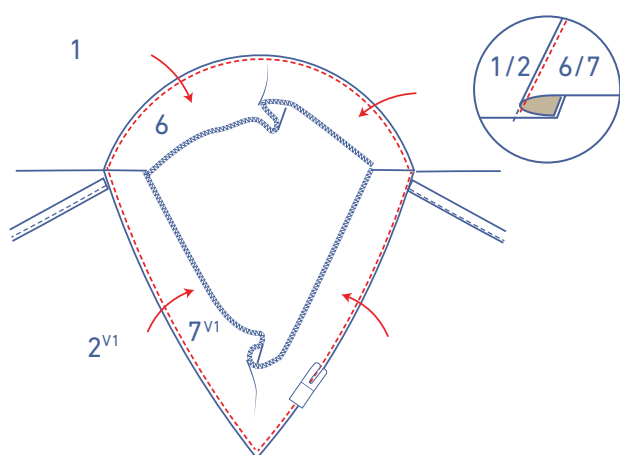
Pin the raw edge of the ties to the right side of the top piece back V1 between the notches as shown.



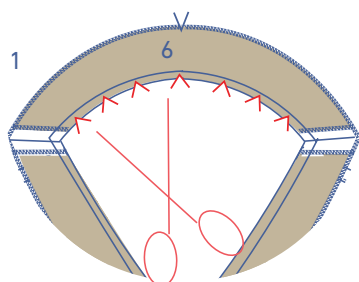
Now place the facing on top, right sides together. Pin and stitch the facing to the body, stitching parallel to the neckline up to the marking thread.



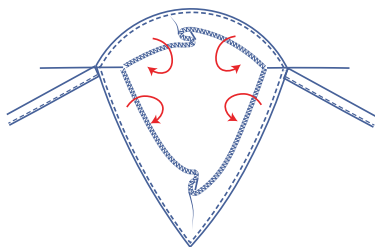
Snip into the seam allowance at the apex of the V until just before the marking thread.



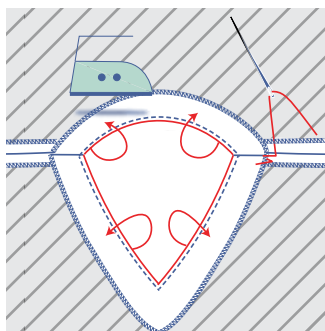
Fold the facing over and stitch it to the seam allowance underneath, right next to the seam (= understitch).



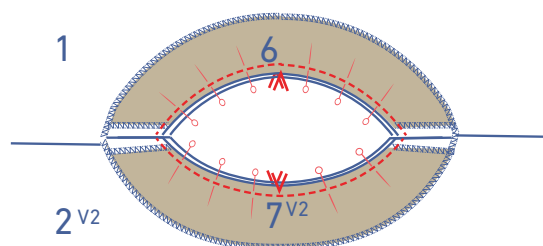
Make small snips in the remaining seam allowance of the front neckline to enable it to lie flat.



Press the facing neatly towards the wrong side and hand stitch to secure the facing to the shoulder seams.

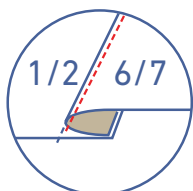


V2

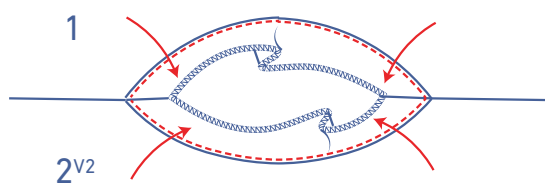


V2:

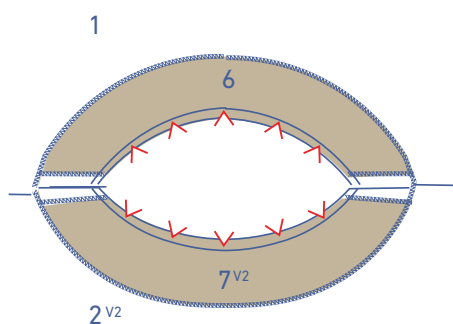
Place the facings on top of the body (right sides together) as shown. Stitch all the way around, parallel to the neckline.

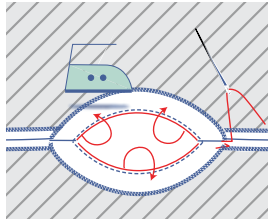
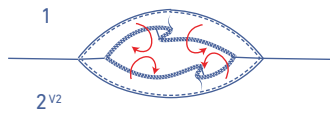


Fold the facing over and stitch to the seam allowance underneath, right next to the seam.



Make small snips in the remaining seam allowance to enable the neckline to lie flat.

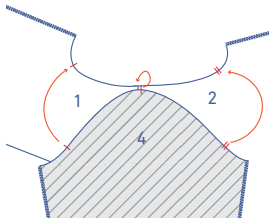
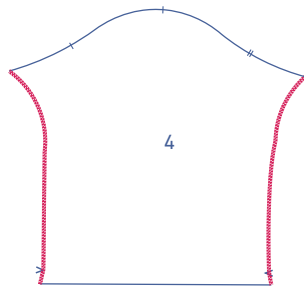




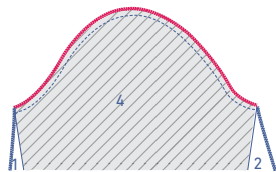
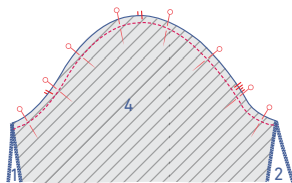
Press the facing neatly towards the wrong side and hand stitch to secure the facing to the shoulder seams.

6

Finish the sides of the sleeve with overlock stitching.



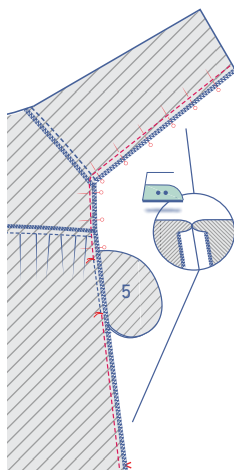
Pin and sew the top of the sleeve (4)(= the sleeve cap) to the armhole, matching the markings. The single notch marks the front, while the double notch marks the back. The top notch aligns with the shoulder seam.

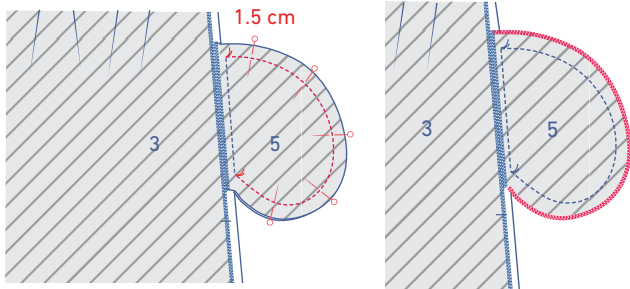


Finish the raw edges together with overlock stitching.

7

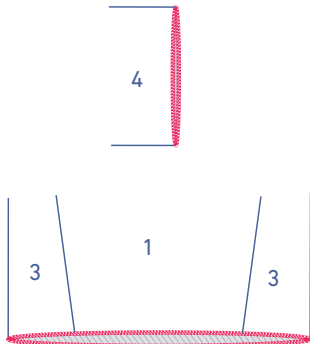
Pin and sew the side and underarm seams right up to the marking thread that indicates the top of the pocket opening. Now, stitch from the next marking thread down to the hem. Move the seam allowance of the pocket pieces out of the way so that you can sew up to the marking threads.





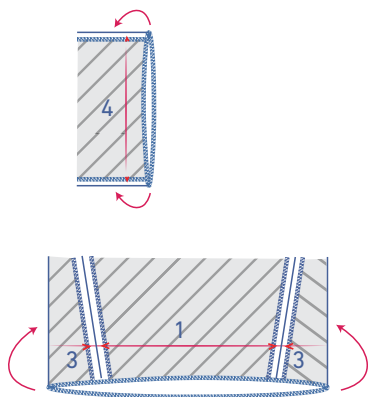
Pin and sew the contours of the pocket pieces together at 1.5 cm.

Finish the raw edges with overlock stitching.

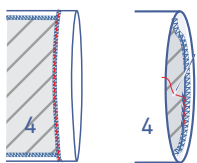


8

Finish the sleeve hem and hem of the dress with overlock stitching.



Press the hem allowance up at the V notches.



Hand sew or stitch into place.

