

Babette by Fibre ⚡ood



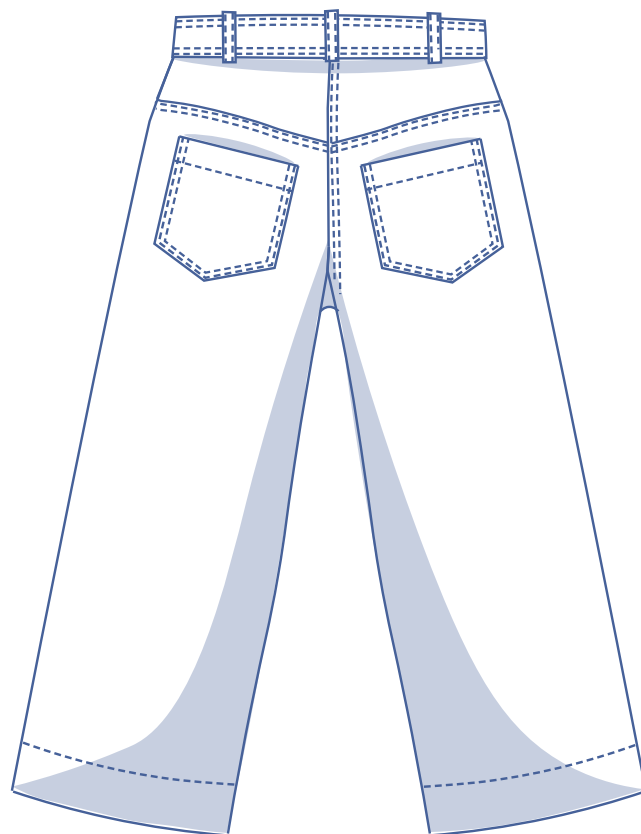
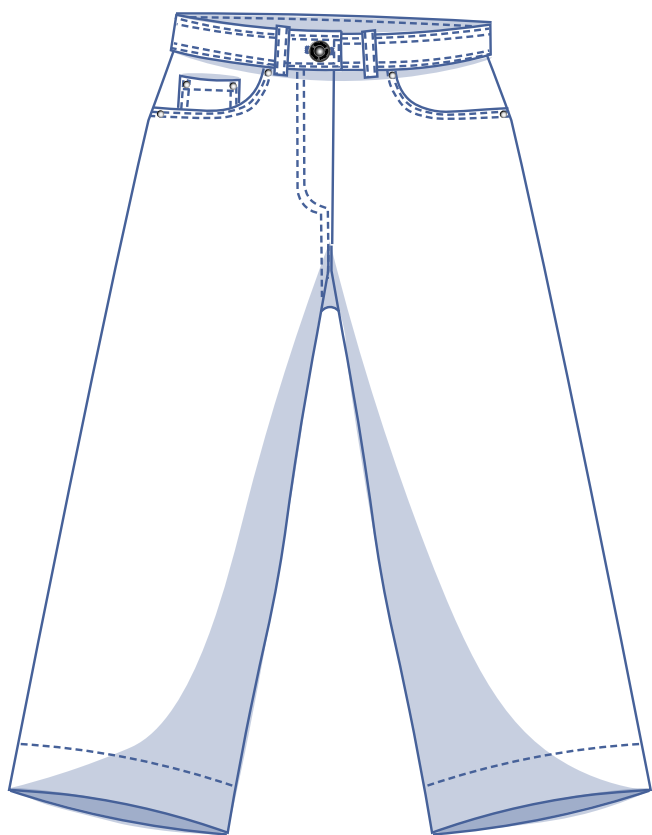
Babette by Fibre ⚡ood

***✂✂



4 - 30

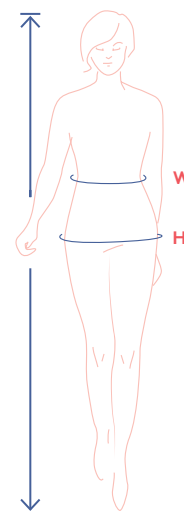
Have you ever had to tearfully part with your favourite pair of jeans because they were threadbare? Meet Babette, the new apple of your eye – a pair of high-waisted trousers (jeans) with wide legs, all the pockets and a zip fly. Never sewn a zip fly? Not a problem! We show you how to sew it on from the first stitch to the final press. Wear these jeans ankle length or even floor length to boost their retro feel. We show you an easy way to alter the length [here](#).



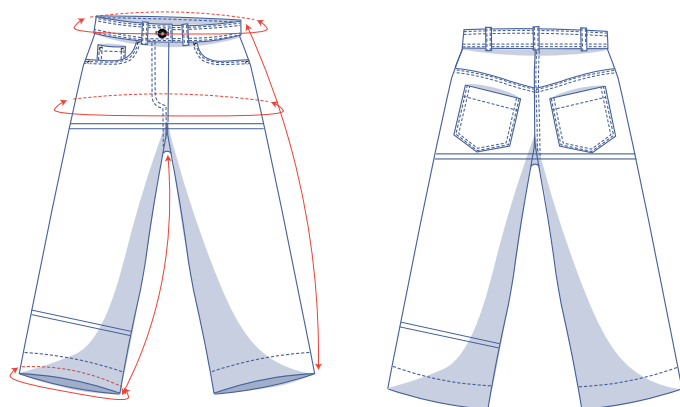
size chart (in cm)

size	EUR	32	34	36	38	40	42	44	46	48	50	52	54	56	58
	UK	4	6	8	10	12	14	16	18	20	22	24	26	28	30
H (height)		160	164	166	167	168	169	170	171	172	172	172	172	172	172
W (waist)		66	68	70	74	78	82	84	88	94.5	101	107.5	114	120.5	127
H (hips)		86	90	94	97	100	103	106	109	115	120	125	130	135	140

To choose your size, start with your **waistline measurement**. Pick the size that's the best match for your waistline. Next, see which size is closest to your hip measurement. When tracing the pattern, simply trace the line of the one size instead of the other.



pattern measurements (in cm)



— shorten or lengthen the pattern here

This chart's measurements are the pattern measurements based on the fabric type and serve as a reference. Ease has been added to the width measurements (on top of the exact body measurements) for a more comfortable fit. Babette is designed to be **fitted at the waist and the hips**.

size	4	6	8	10	12	14	16	18	20	22	24	26	28	30
side length*	90.25	90.75	91.25	91.75	92.25	92.75	93.25	93.75	94.25	94.75	95.25	95.5	96	96.5
inseam length	62.75	62.75	62.75	63	63	63	63	63	63	63	63.25	63.25	63.5	63.5
waistline measurement	66	68	70	74	78	82	84	88	94.5	101	107.75	114.25	120.75	127.25
hips	88	92	96	99	102	105	108	111	117	122.25	127.25	132.5	137.5	142.5
hem circumference	48,75	52	55,25	56,5	58	59,5	61,5	63	66,5	68,75	71,25	73,5	76	78,5

* Including the waistband.

Compare the stated lengths to the measured or desired lengths. **Shorten** or **lengthen** the trouser legs and/or rise by cutting the pattern pieces at the indicated double lines. Then either increase the distance between the cut pieces by the desired amount (to lengthen) or overlap the pieces (to shorten). Make sure that the CF and CB lines and the side seams are always straight.



IMPORTANT

Adjust the amount of fabric to be used based on these alterations.

notions



- Thread
- Iron-on interfacing: max. 55 cm
- (Jeans) Button (Ø 2.1 cm): 1
- Decorative rivets (Ø 0.9 cm): 6
- Light-weight cotton or lining: 20 cm
- Closed-end zip: see table
- Fabric: see table

zip		4	6	8	10	12	14	16	18	20	22	24	26	28	30
length	cm	15	15	15	15	15	15	15	17	17	17	17	17	17	17

fabric		4	6	8	10	12	14	16	18	20	22	24	26	28	30
fabric width 110 cm	cm	195	200	210	215	220	220	220	225	255	265	265	270	275	275
fabric width 140 cm	cm	125	125	125	150	185	185	190	190	205	215	225	225	230	230

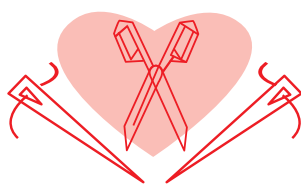
The corresponding fabric layout can be found on page 6 of these sewing instructions.

fabric advice



Your best bet for Babette is stretch or no-stretch cotton twill. They will also look divine in corduroy or leather(ette).

Proud to be #Sewista

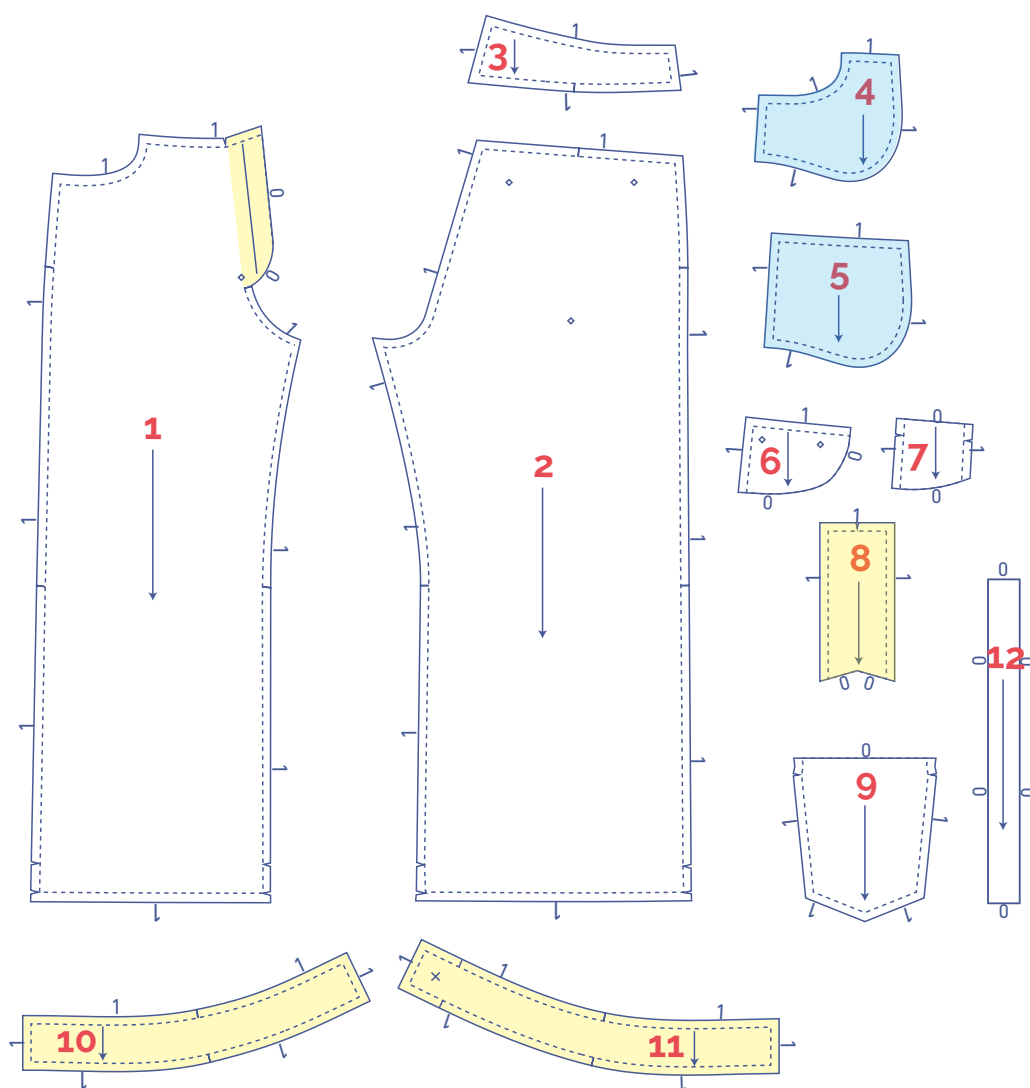


pattern pieces & seam allowances (in cm)

To sew the garment as described in the instructions, draw the illustrated seam allowances around the paper pattern pieces before cutting them out. If you are using a PDF pattern, the pattern can be printed with or without seam allowance.





To find out more, watch the [video](#).

- | | |
|-------------------------|----------------------|
| 1. front: 2x | 7. watch pocket: 1x |
| 2. back: 2x | 8. fly LF: 1x |
| 3. yoke: 2x | 9. pocket back: 2x |
| 4. inner pocket bag: 2x | 10. RF waistband: 2x |
| 5. pocket: 2x | 11. LF waistband: 2x |
| 6. pocket opening: 2x | 12. belt loops: 1x |



IMPORTANT

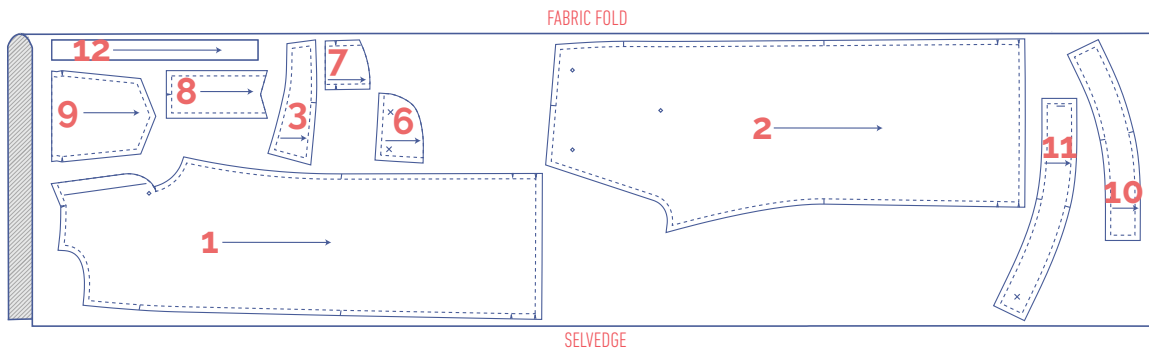
The pieces highlighted in light yellow have iron-on interfacing attached to the wrong side.

 material type	
	fabric
	iron-on interfacing
	lining/lightweight cotton

fabric layout – solid fabrics

fabric width 110 cm

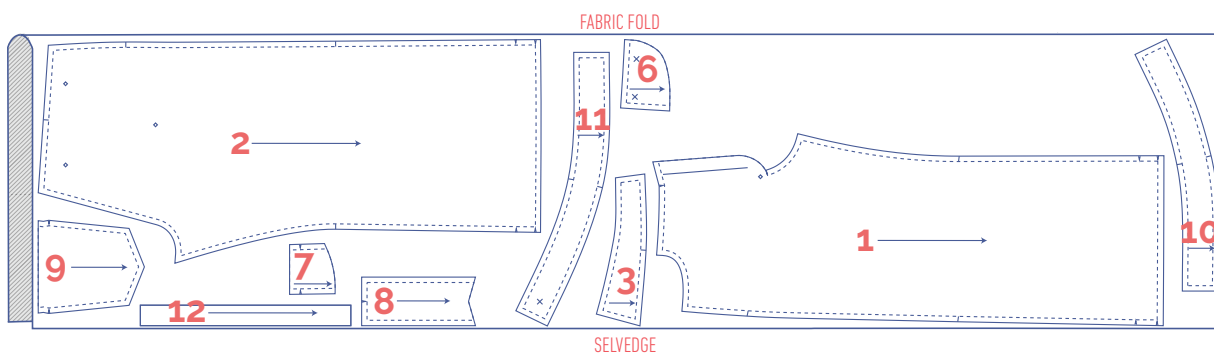
4 - 8



IMPORTANT

You only need pattern pieces 7, 8, and 12 once.

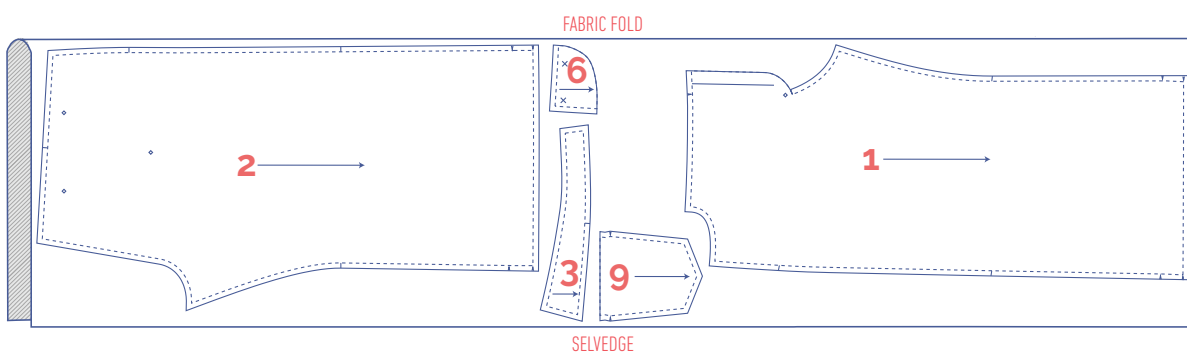
10 - 18



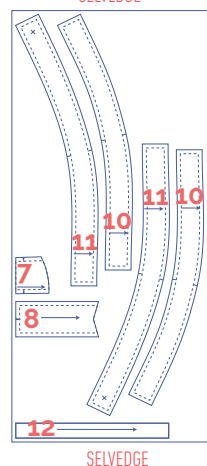
IMPORTANT

You only need pattern pieces 7, 8, and 12 once.

20 - 30



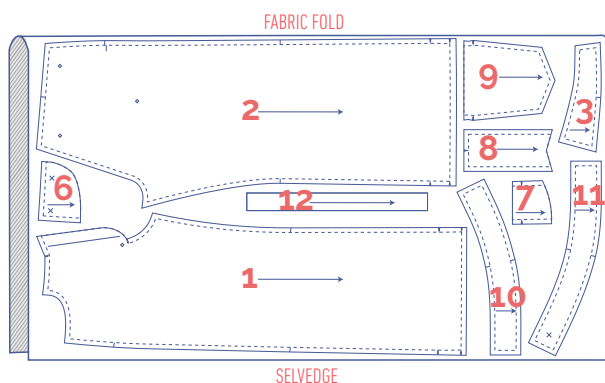
+ SELVEDGE



fabric layout – solid fabrics

fabric width 140 cm

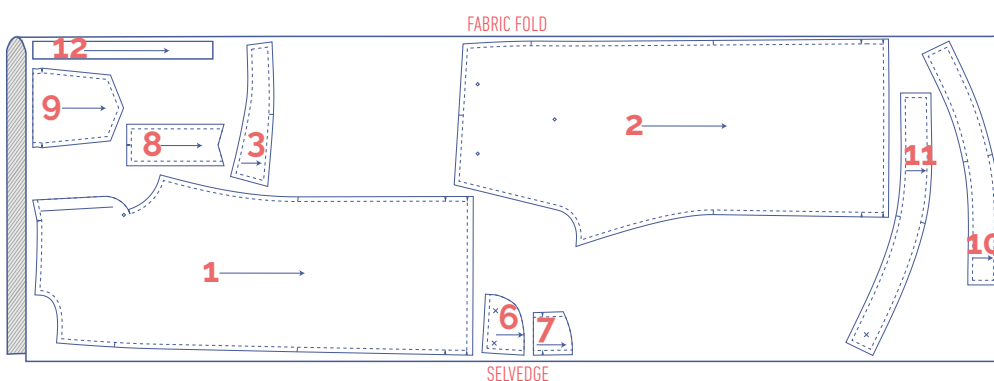
4 - 8



IMPORTANT

You only need pattern pieces 7, 8, and 12 once.

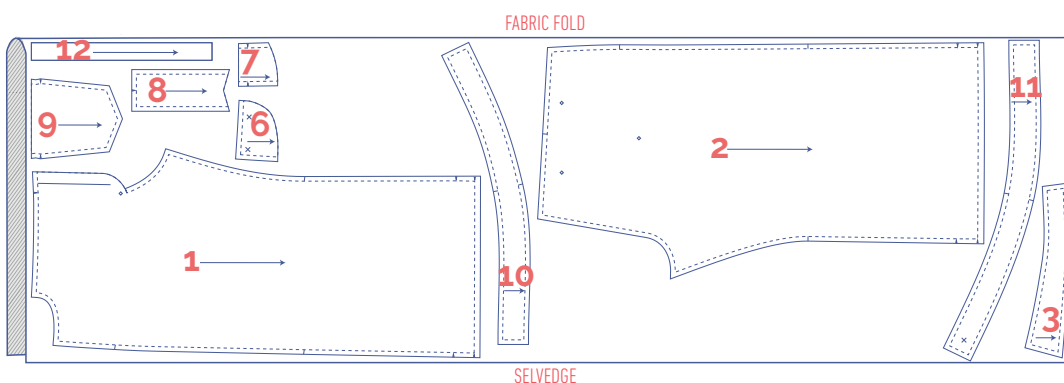
10 - 22



IMPORTANT

You only need pattern pieces 7, 8, and 12 once.

24 - 30



IMPORTANT

You only need pattern pieces 7, 8, and 12 once.

marking pattern pieces

	Notch the pattern paper and fabric at the following points
	single notch
	double notch
V	V notch

	Mark the following points using marking thread.
	centre point
	snap/button

sewing instructions



The method used to finish the seams depends on the fabric used.
The pieces are always sewn together with the right sides of the fabric facing, unless stated otherwise.

F front

B back

RF right front piece



LF left front piece



CF centre front

CB centre back

RB right back



LB left back



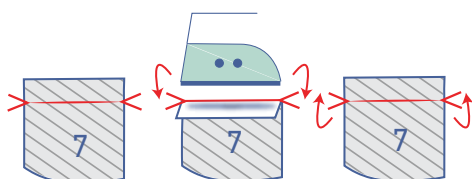
 right side

 wrong side

 lining right side

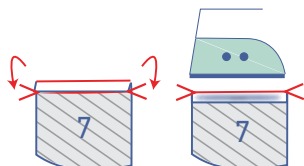
 lining wrong side

 iron-on interfacing



1

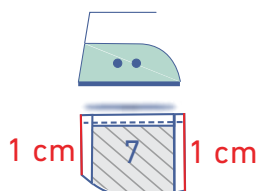
Press the top of the watch pocket (7) towards the wrong side at the V notches. Open back out.



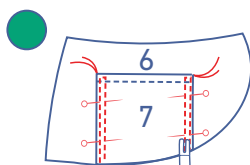
Fold the raw edge down to meet the pressed fold line and then fold down again.



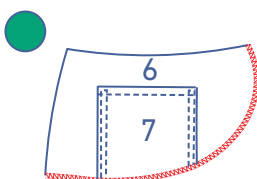
Stitch into place right next to the edge.



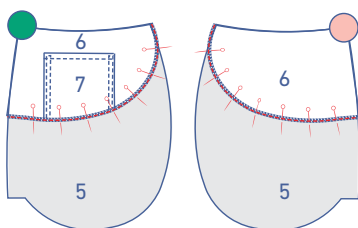
Press 1 cm of the other straight edges towards the wrong side, where indicated.



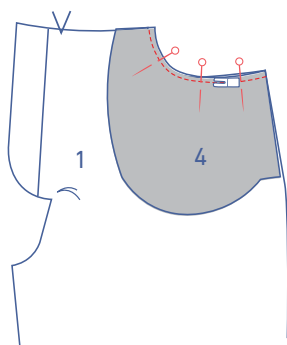
Pin the wrong side of the watch pocket to the right side of the pocket opening (6) of the RF where indicated. Sew the long ends into place right next to the edge. Topstitch next to the first row of stitching at presser foot width. Finish at the top with horizontal reinforcement stitching between the two rows of topstitching.



Finish the curved edges with overlock stitching.

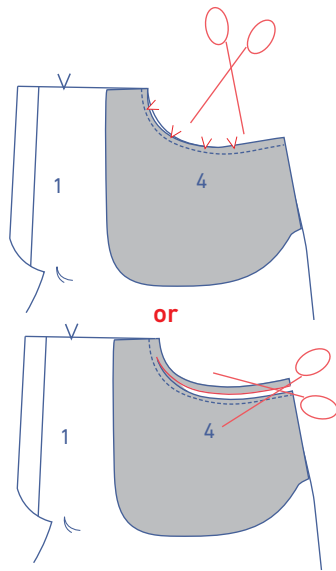


Pin the wrong side of the pocket opening + watch pocket on top of the pocket piece (5). Both pieces should now be facing right side up. Sew the pocket opening and pocket together along the overlock stitching.

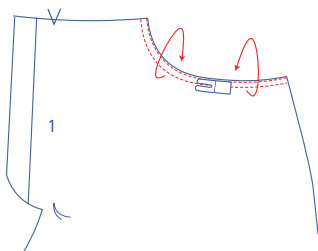


2

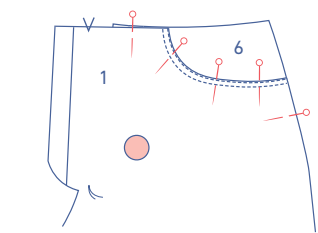
Place the pocket construction you just made on top of the front (1), so the inner pocket bag (4) is on top. Pin and sew the curved edges of the front (1) and the inner pocket bag (4).



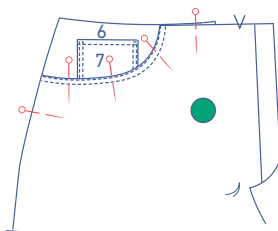
Trim or notch the seam allowance so that you can neatly fold the inner pocket bag over towards the wrong side.



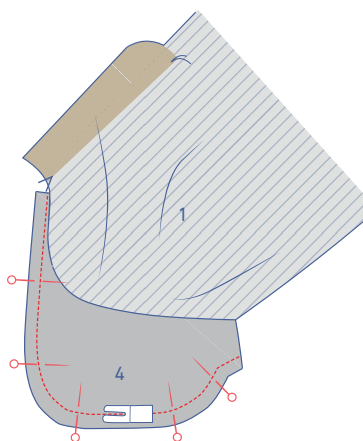
Fold the pocket all the way over to the wrong side. Sew two lines of topstitching along the contoured edge of the pocket.

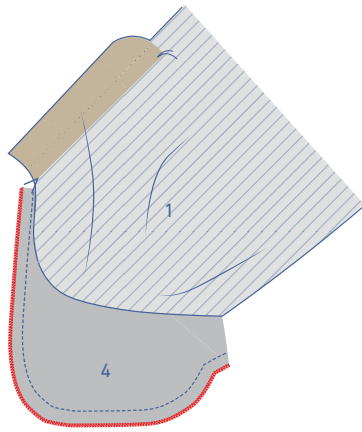


Pin the front to the combined pocket piece + pocket opening. Both pieces should now be lying with the right side up and the top and sides matching as shown.

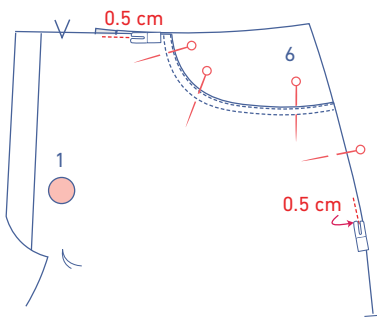


Fold the front up or to the side and neatly pin both pocket pieces together. Stitch the contours of the pocket pieces together.

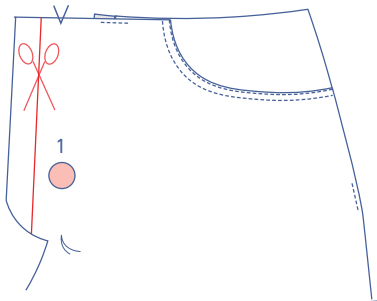




Finish the raw edges with overlock stitching.

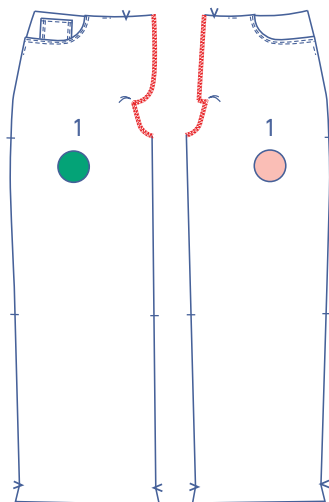


Fold the front back down. Stitch the pocket pieces to the front at the top and side at 0.5 cm from the raw edges.

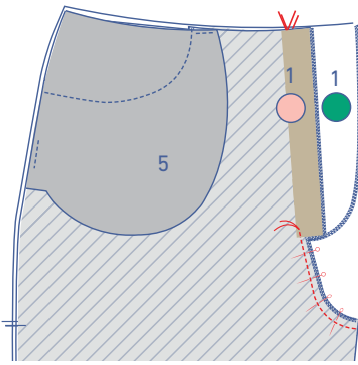


3

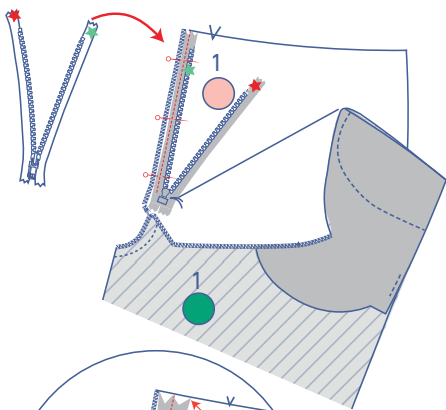
Cut a strip from the LF fly along the indicated line.



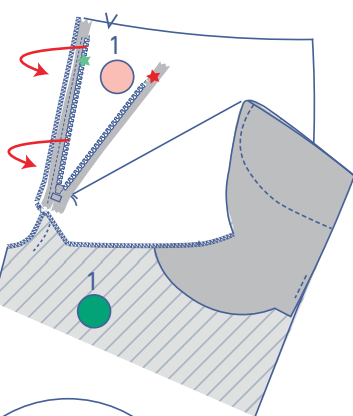
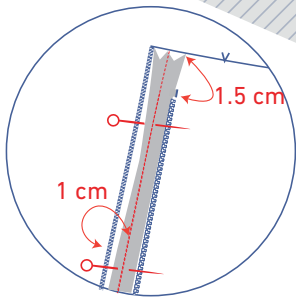
Finish the CF seams with overlock stitching where shown.



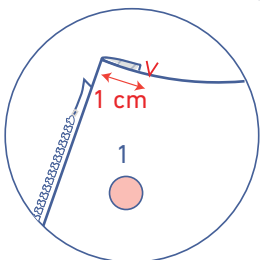
Place the RF on top of the LF, right sides together. To join the RF and LF, pin and stitch starting at the marking thread. Make sure that the V notches on the CF are matching. Note that the RF fly piece extends past the LF.

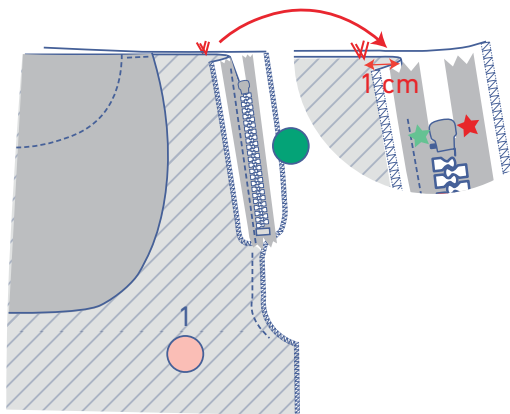


First place the zip down with the right side facing up. Open the zip and flip the side of the zip tape marked with a small green star over to the right and place it onto the LF. The edge of the zip tape should lie next to the overlock stitching. The zip teeth should lie 1.5 cm under the top edge. Pin and sew into place at 1 cm from the CF seam (= the middle of the zip tape).

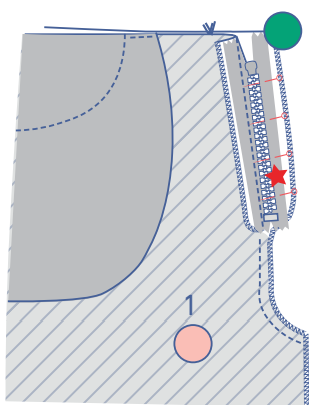


Next, fold the zip tape back to the left.

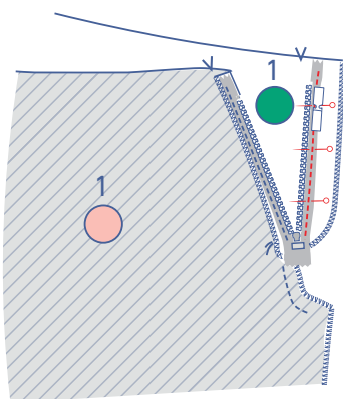




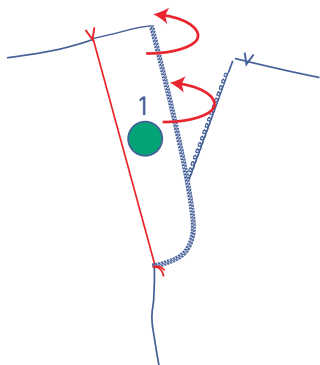
Close the zip and place the front pieces against each other with the right sides facing. The V notches indicating the CF should be matching. Press both front pieces neatly flat.



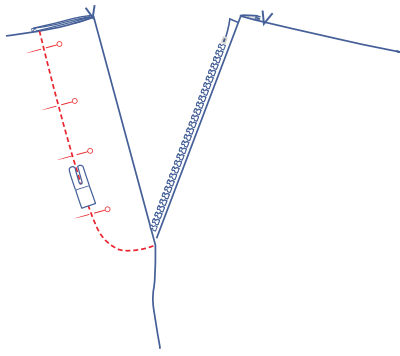
Pin the side of the zip tape marked with a red star into place on the RF fly.



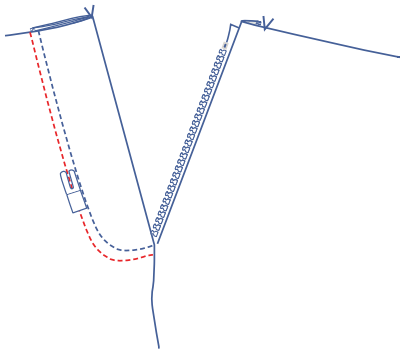
Open the zip and stitch the zip tape into place using the zip presser foot.



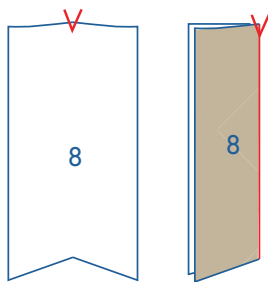
Fold the RF fly facing over at the V notch.



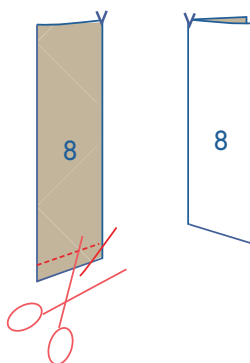
Pin into place and topstitch the right side of the fabric along the edge of the through all layers (front + fly facing).



Topstitch at presser foot width next to the first row of stitching.



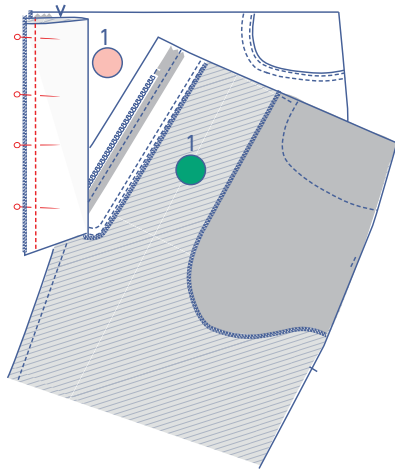
Press the fly LF (8) in half at the V notches with the right sides of the fabric facing.



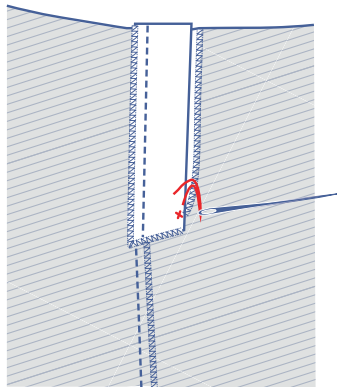
Stitch the short slanted end at the bottom. Trim the seam allowance in the corner and turn the right way out.



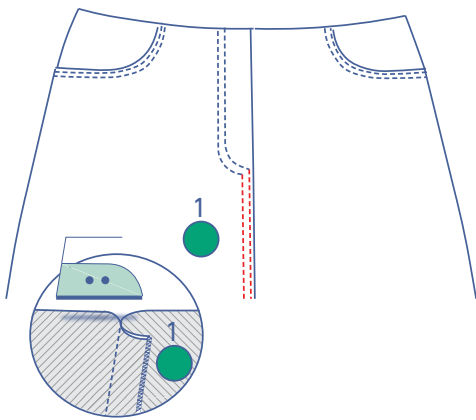
Join the raw edges of the side with overlock stitching.



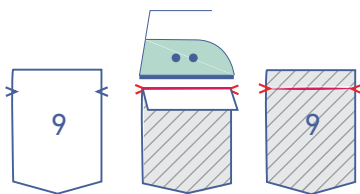
Pin and sew the fly to the seam allowance of the LF and the zip. Next, press the fly front out of the way and close the zipper.



Hand sew the RF fly facing and the fly LF piece together at the bottom with just a few stitches.

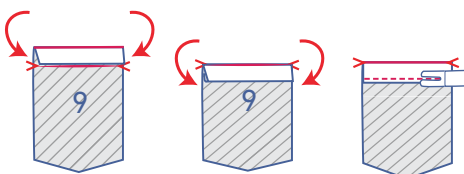


Press the seam allowance of the crotch seam towards the RF. Now, sew two rows of topstitching on the RF. The first row is right next to the seam, the second row is presser foot width from the first row.

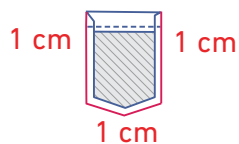


4

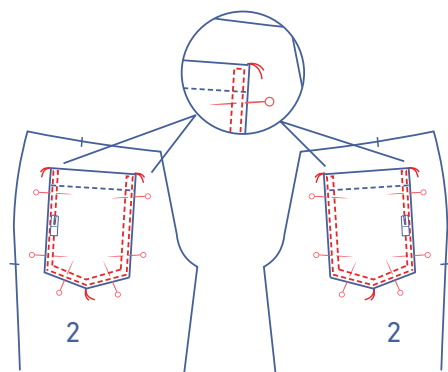
Press the top of the pocket back (9) at the V notches towards the wrong side and open back out.



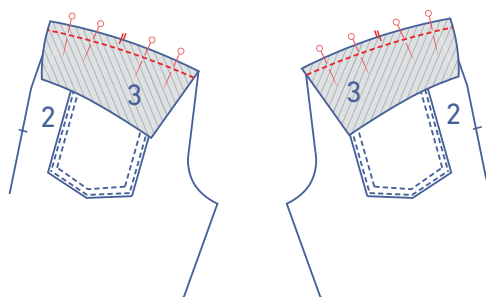
Fold the raw edge to the pressed fold line and then fold down again along the fold line.



Press 1 cm of the other edges towards the wrong side where indicated.

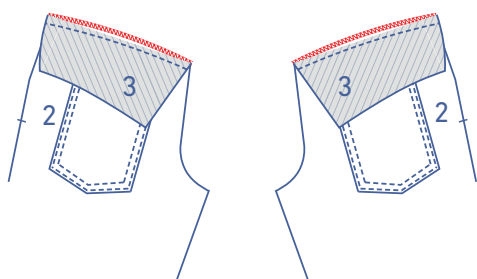


Pin and sew the pocket to the back (2) where indicated. Edgestitch into place next to the first row of stitching at presser foot width from the first row of stitching. Finish with horizontal reinforcement stitching between the two lines of topstitching.

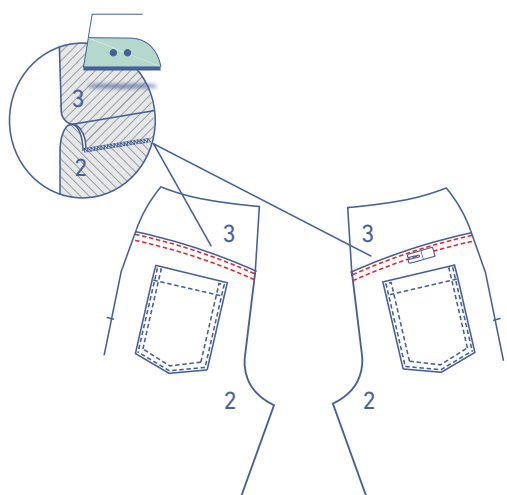


5

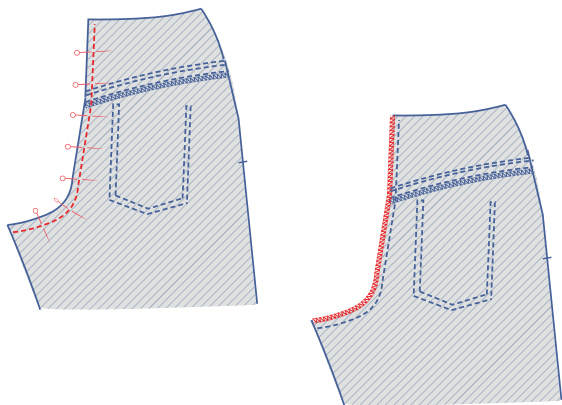
Pin and stitch the yoke (3) to the back, matching the notches.



Finish the raw edges with overlock stitching.



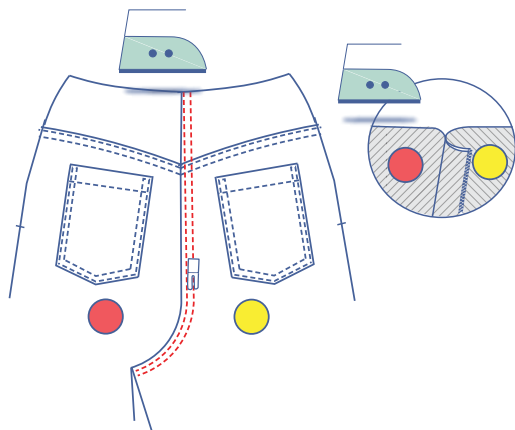
Press the seam allowance towards the back (2). Now, sew two rows of topstitching on the back. The first row is right next to the seam, the second row is presser foot width from the first row.



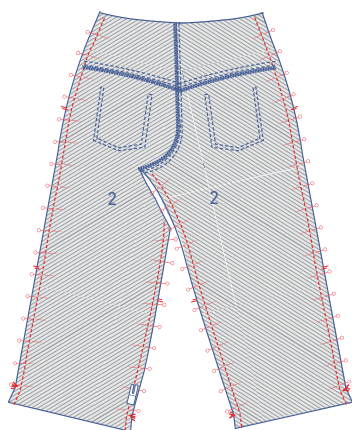
6

Place the back pieces on top of one another, right sides together. Pin and sew the crotch seam into place.

Finish the raw edges with overlock stitching.

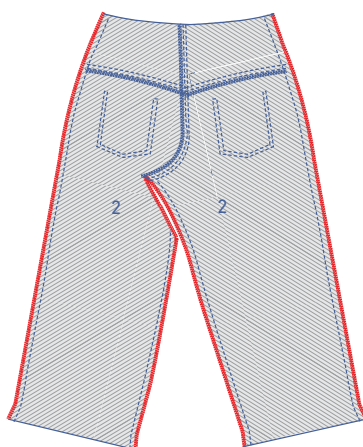


Press the seam allowance towards the RB. Sew two rows of topstitching on the RB. The first row is right next to the seam, the second row is presser foot width from the first row.



7

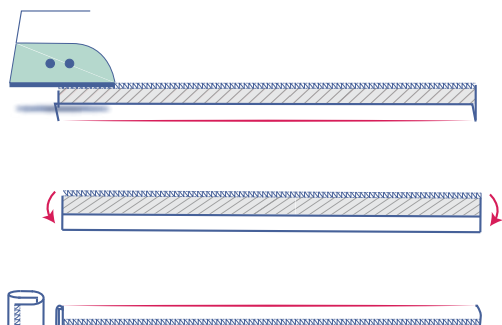
Pin the side and inseams together. Stitch from the hems and work your way up.



Finish the raw edges with overlock stitching.

8

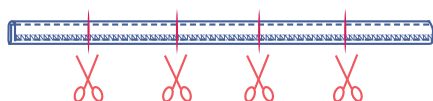
Finish 1 long end of the belt loops (12) with overlock stitching.



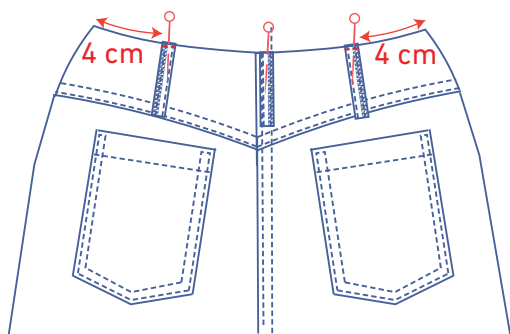
Press the unfinished end towards the wrong side and press the overlocked side over this.



Stitch into place right next to the edge of both ends.



Cut the strip for the belt loops into 5 equal parts.

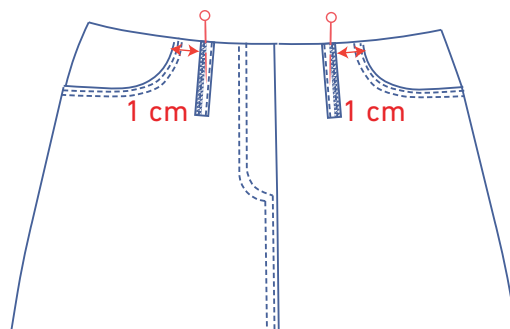


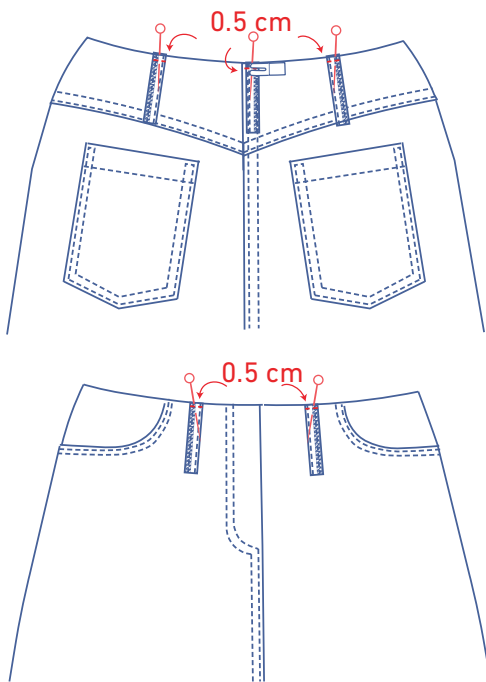
Pin one short end of each of the 5 belt loops to the waistline:

On the back: 1 to the CB and then one at 4 cm from each side seam.

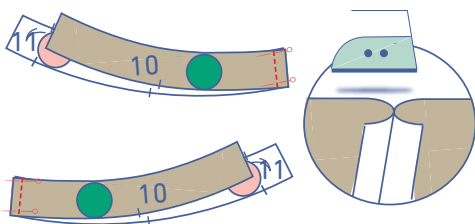
On the front: 1 at 1 cm from each pocket opening.

Note that the overlocked edge of each belt loop should be facing up.





Sew into place at 0.5 cm from the top edge.

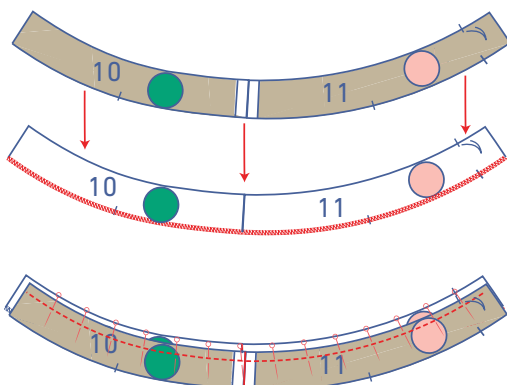
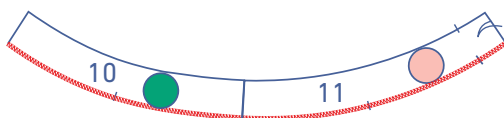


9

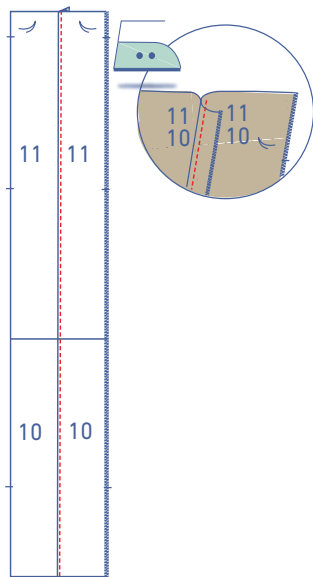
Pin and sew the CB seam of the RF waistband (10) and LF waistband (11). Press the seam allowance open.



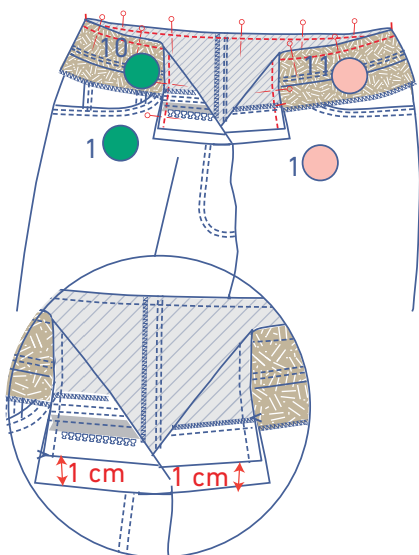
Finish the bottom of one of the waistbands with overlock stitching, so that the waistband LF is on the right side.



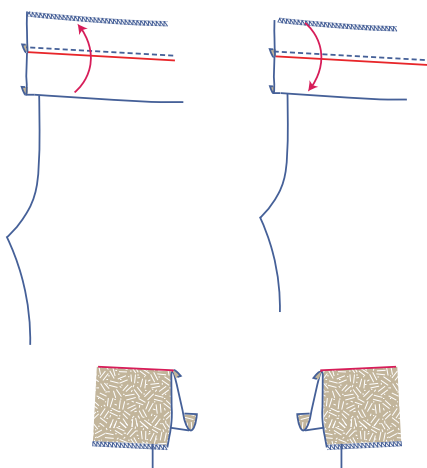
Place the waistband pieces on top of each other, right sides together. Pin and sew the top of both waistbands with the CB seams matching.



Open up your work. Move the seam allowance over the side with the overlocking and stitch the waistband to the seam allowance underneath, right next to the seam.

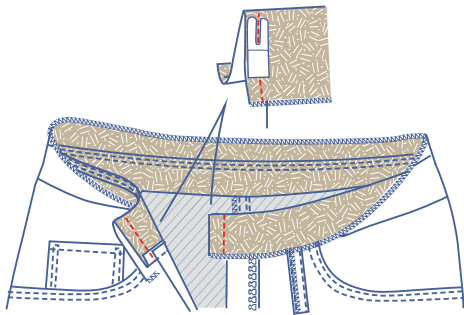


Pin and sew the waistband with the non-overlocked edge to the trouser waistline. Make sure that the side seams and notches match. Each end of the waistband should stop 1 cm past the finished CF.

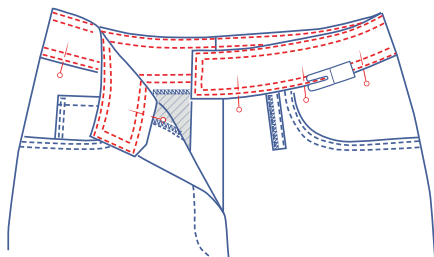


Now, fold the waistband all the way up.

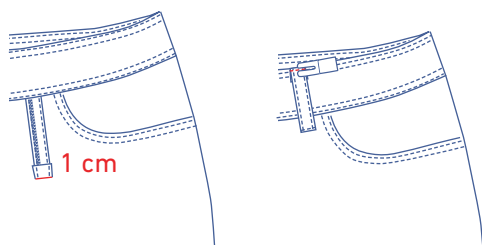
Next, fold the overlocked waistband back down along the seam so that the right sides of both waistbands are touching.



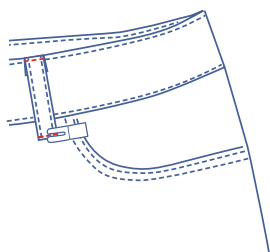
Stitch both short ends.



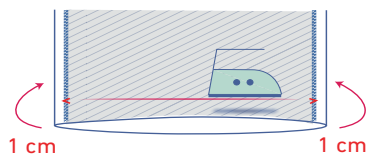
Turn the waistband the right way out. Press flat and pin the front and back sides of the waistband together along the right side. Stitch the waistband into place all the way around next to the edge. Then make another line of stitching presser foot width from the edge.



Fold the top end of each belt loop 1 cm onto the wrong side. Stitch into place at the top of the waistband right next to the edge.

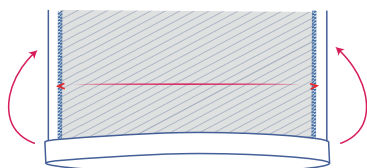


Stitch the bottom of the belt loops into place right next to the edge.

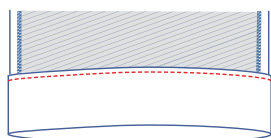


10

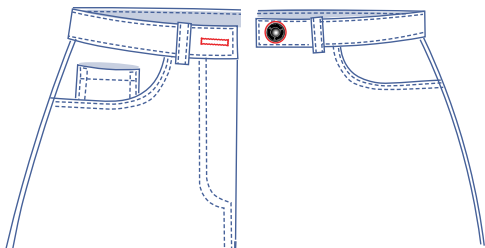
First, press the hem allowance up 1 cm onto the wrong side.



Then, press up again at the V notches.

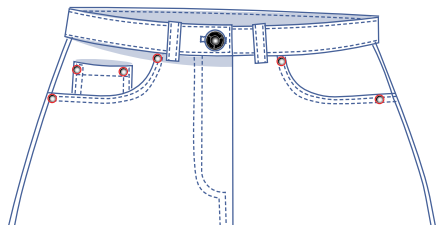


Edgestitch into place.



11

Attach the (jeans) button to the waistband on the LF side and make a horizontal buttonhole across from this on the waistband of the RF side.



Attach the decorative rivets at the indicated places.