

Mary by Fibre Mood



Mary by Fibre Mood



2 - 14 years

Looking for a super sweet blouse for a super sweet girl? Mary is a glowing vision of summer fun with a square neckline, fluttery sleeves and gathers and ruffles. There's a good chance that if you make one Mary, you'll want to make more.

Make one in a solid with funky buttons for a little pizzazz, one in stripes and maybe just one more to get it out of your system, this time with textured fabric.

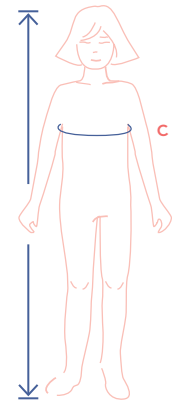
Viva la bella principessa e viva la Sewista!



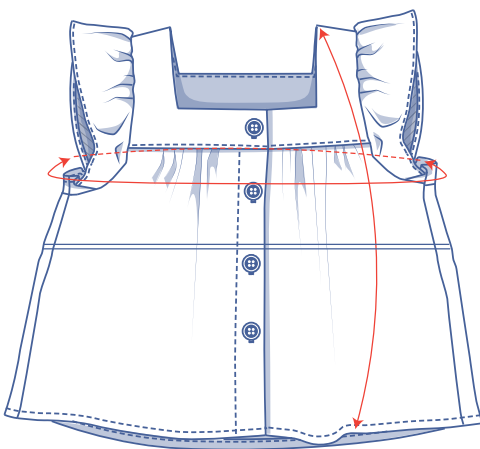
size chart (in cm)

size	2	3	4	5	6	8	10	12	14
body height	92	98	104	110	116	125	137	150	160
C (chest)	52	54	56	58	60	64	68	72	76

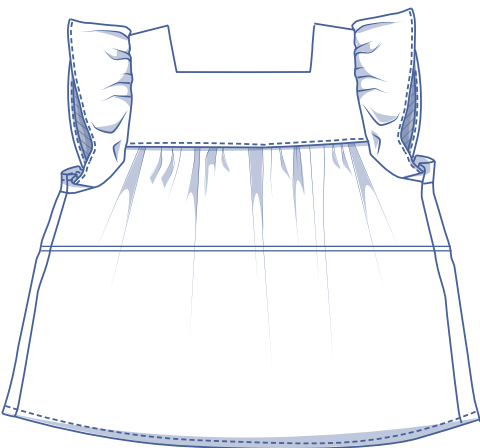
To select the right size for this pattern, the chest measurement should be your guideline (regardless of age or height). To pick the size, go for the chest size closest to the actual measurements. Next, alter the length of the selected size based on the child's age or height, listed in the table below.



pattern measurements (in cm)



— shorten or lengthen the pattern here



These are the pattern measurements based on the used fabric type and serve as a reference. Ease has been added to the width measurements (in addition to the exact body measurements) for a more comfortable fit. Mary is designed to have a loose cut. If needed, make the pattern a size bigger or smaller depending on the desired cut.

size	2	3	4	5	6	8	10	12	14
length	35.25	37.25	39.25	41.5	43.5	47.75	51.75	56	60.25
chest	66.25	68.25	70.25	72.25	74.25	78.25	82.25	86.25	90.25

Compare the stated lengths to the measured or desired lengths. **Lengthen** or **shorten** the top by cutting the pattern pieces at the indicated double lines. Then either increase the distance between the cut pieces by the desired amount (to lengthen) or overlap the pieces (to shorten). Make sure that the CF and CB lines and the side seams are always straight.



IMPORTANT

The amount of fabric used may change based on the alterations.

supplies



- Thread
- Iron-on interfacing: max. 10 cm
- Buttons (Ø 1.1 cm): see table
- Fabric: see table

buttons	2	3	4	5	6	8	10	12	14
amount	4	4	4	4	4	5	5	6	6

fabric		2	3	4	5	6	8	10	12	14
fabric width 110 cm	cm	65	70	80	100	105	115	125	135	140
fabric width 140 cm	cm	65	65	70	70	70	75	85	95	110

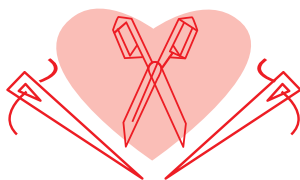
The corresponding fabric layout can be found on page 6 of these sewing instructions.

fabric advice



No need to be shy, because Mary looks lovely in all kinds of cotton – plain or print. Viscose in a delicate pattern also works well.

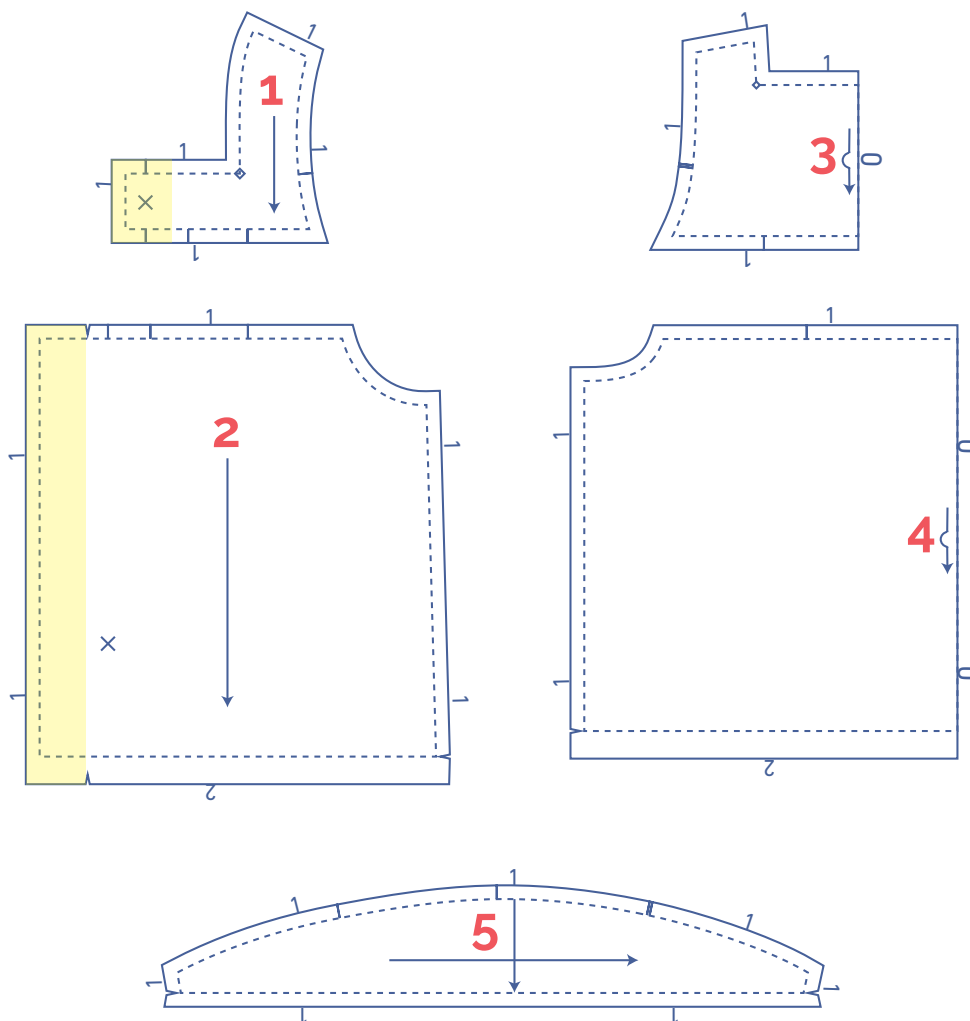
Proud to be #Sewista



pattern pieces & seam allowances (in cm)



To sew the garment as described in the instructions, you must draw the illustrated seam allowances around the paper pattern pieces before cutting them out. If you are using a pdf version of the pattern, you may print it with or without seam allowances. If you print with seam allowances, the solid lines denote the cutting lines, and dashed lines denote the stitch lines. Check out the [video](#).

1. top front: 4x
2. front: 2x
3. top back: 2x on fabric fold
4. back: 1x on fabric fold
5. sleeve: 2x



IMPORTANT

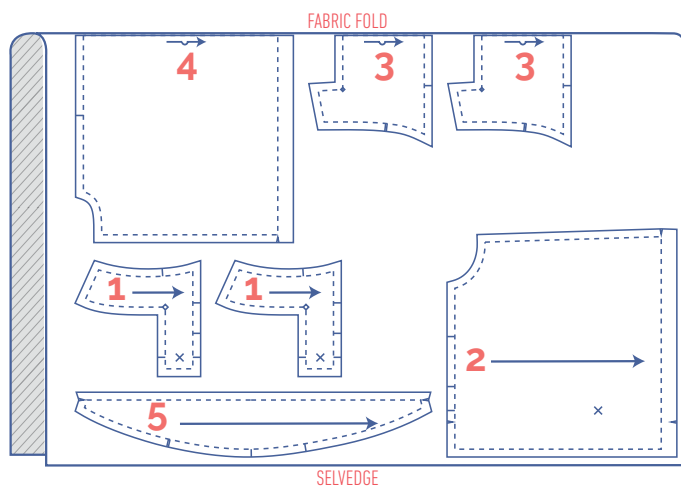
The pieces highlighted in light yellow have iron-on interfacing attached to the wrong side.

?	material type
	fabric
	iron-on interfacing

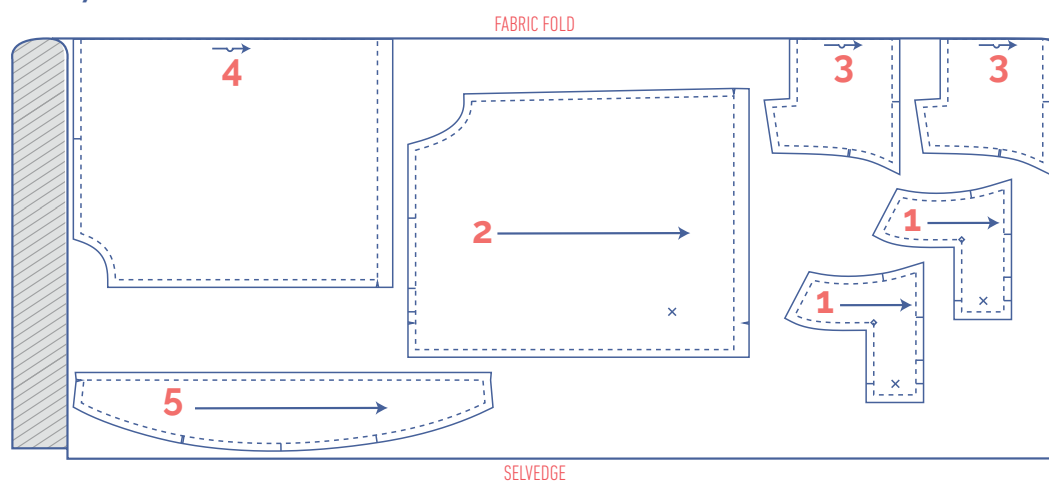
fabric layout – solid fabrics

fabric width 110 cm

2 - 4 years



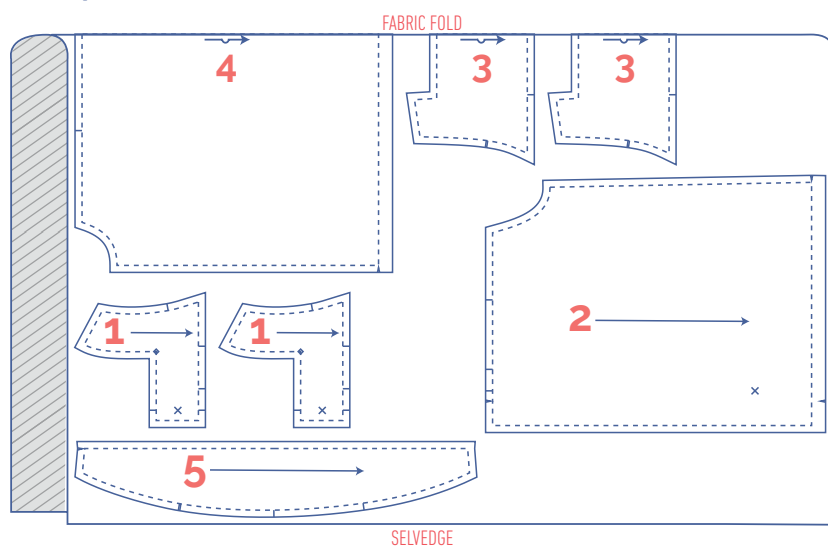
5 - 14 years



fabric layout – solid fabrics

fabric width 140 cm

2 - 14 years



marking pattern pieces

	notch the pattern paper and fabric at the following points
	single notch
	double notch
V	V notch
	mark the following points using marking thread
	centre point
	buttons

sewing instructions



The method used to finish the seams depends on the fabric used.
The pieces are always sewn together with the right sides of the fabric facing together, unless stated otherwise.

F front

B back

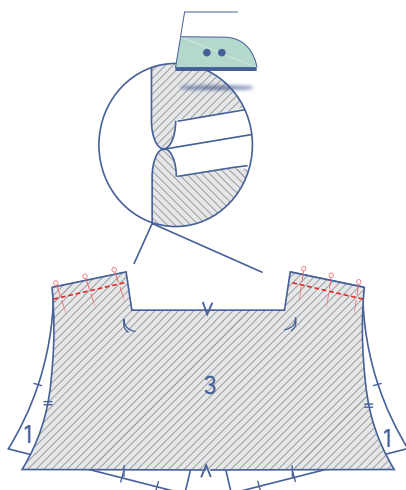
CF centre front

CB centre back

□ right side

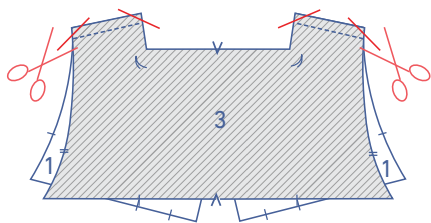
▨ wrong side

▤ iron-on interfacing

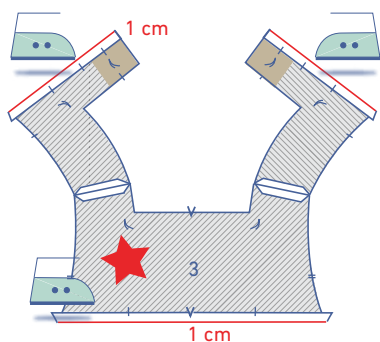
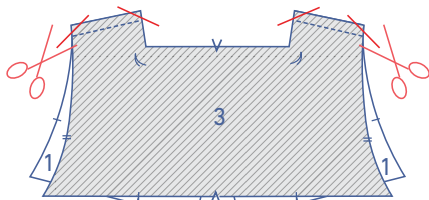


1

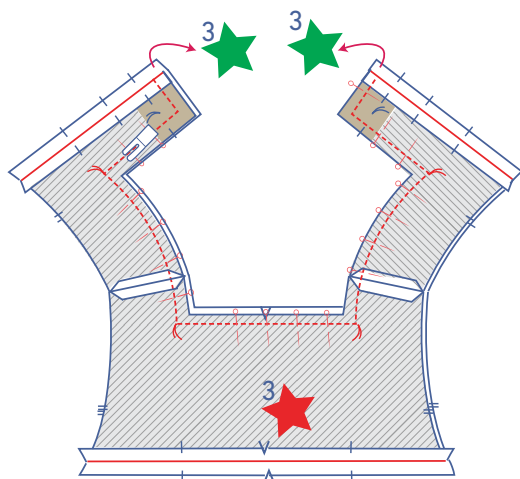
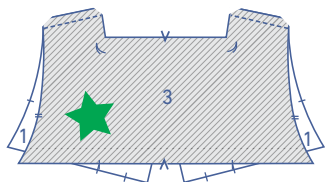
Pin and sew the shoulder seams of the both front top pieces (1) and the back top piece (3) together. Press the seam allowances open.



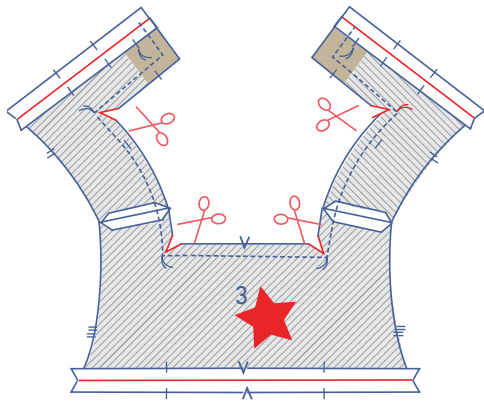
Trim the seam allowance at an angle at the corners of the shoulder seams of both sets to prevent the fabric from bunching. Repeat the steps above to make another set of top fronts and back.



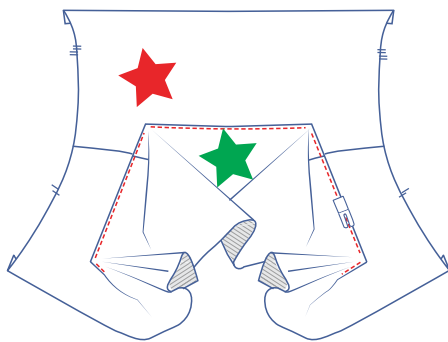
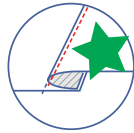
On one set, press the bottom straight edges 1 cm onto the wrong side. This set has been marked with a red star. This will eventually end up on the right side of the blouse. The set with the green star will end up on the wrong side of the blouse.



Place the two sets on top of each other as shown, right sides together. Pin and sew the short ends of the CF and the neckline of both pieces together as shown. Each time you reach a corner (as indicated by a marking thread) leave the needle in the fabric, raise the presser foot, turn the garment, lower the presser foot back down and continue sewing.

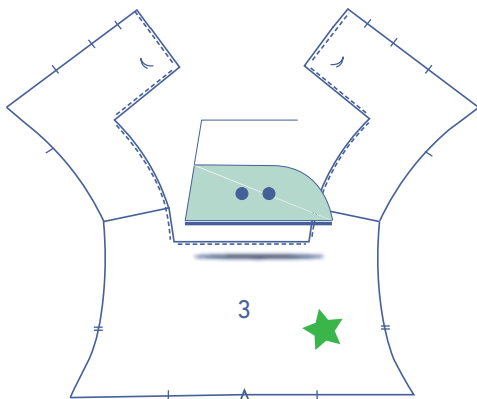


Snip diagonally into the seam allowance at the corners so that you can turn the garment the right way out when you're done. Note: to make clean right angles, snip until just before the marking thread.

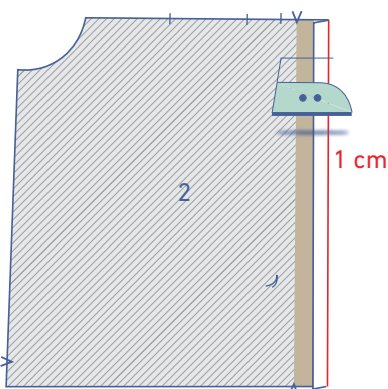


Flip the top piece marked with a green star to the right side, and use your fingers to push the seam allowance towards the top piece.

Sew this top piece through all layers right next to the seam. This will give your neckline nice, clean lines. Make sure that anytime you fold or move fabric out of the way, that the straight edges you will be stitching are as flat as possible.

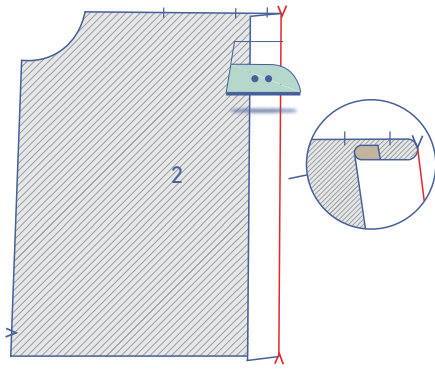


Now tuck the piece with the green star underneath the piece with the red star, so that the wrong sides are touching and the edges are aligned. Press.

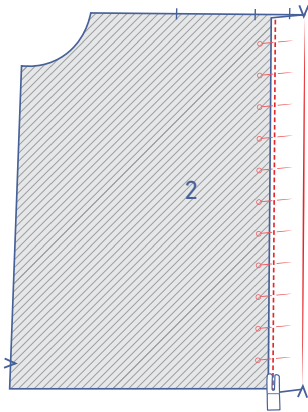


2

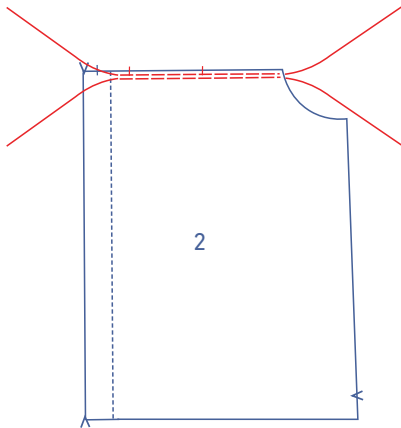
Start by pressing 1 cm of the interfaced side of the front (2) over to the wrong side.



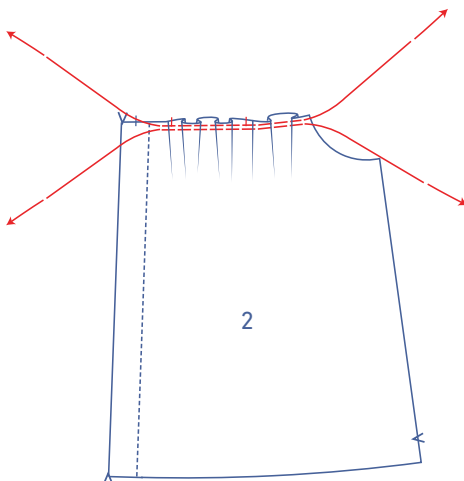
Next, fold over again and press the interfaced side over at the V notches at the top and bottom.



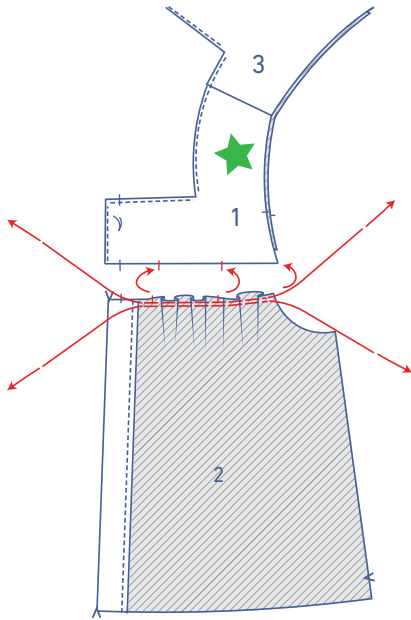
Sew into place right next to the folded edge.



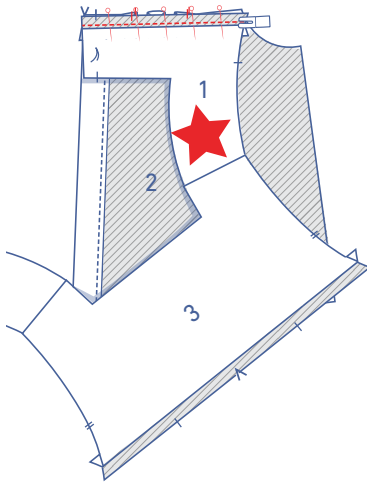
Starting just before the notch, sew 2 parallel rows of stitching at the top of the front using a long stitch length at a low thread tension. Leave the thread tails long on both sides.



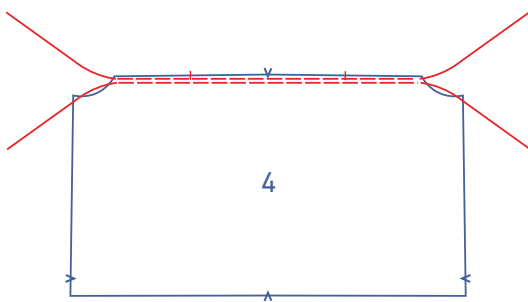
Carefully tug the ends of the gathering threads to create ruffles in the fabric.



Pin the bottom of the top piece with a green star to the wrong side of the front and distribute the ruffles evenly until the notches are matching. The piece with the green star should be touching the wrong side of the front (2).

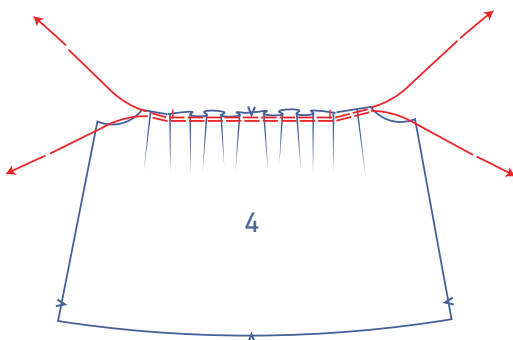


Sew into place and remove the gathering threads.

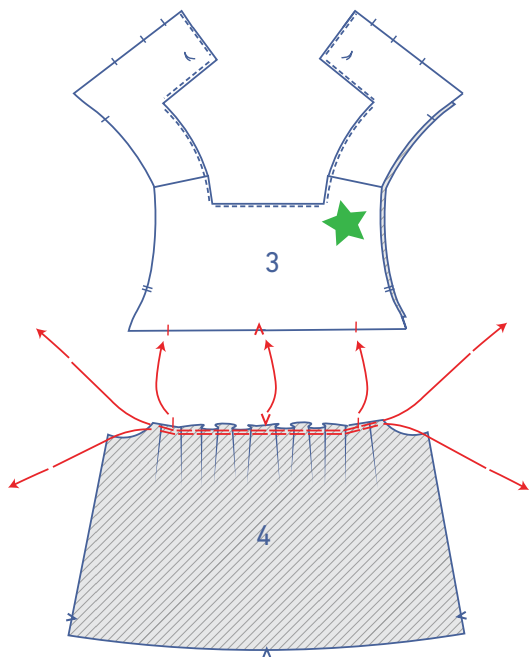


3

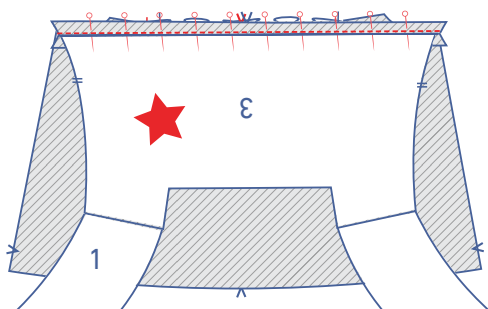
Sew 2 parallel rows of stitching at the top of the back, using a long stitch length and a low thread tension. Leave the thread tails long.



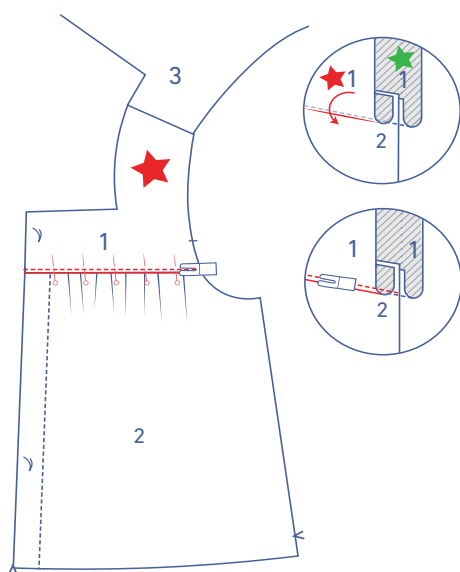
Carefully tug the ends of the gathering threads to create ruffles in the fabric.



Pin the bottom of the top piece with the green star (with the unpressed bottom) to the wrong side of the back and distribute the ruffles evenly until the notches are matching. The piece with the green star should be touching the wrong side of the back (4).

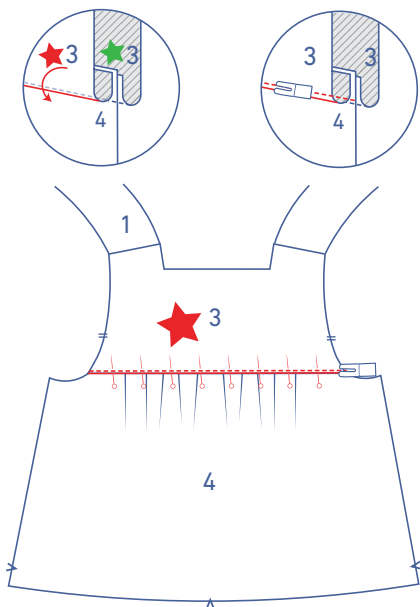


Sew into place and remove the gathering threads.

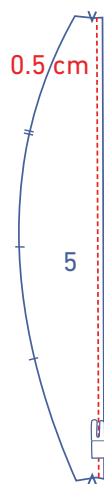


4

Fold the top piece up and place the fold line of the top piece with the red star (with the pressed bottom) directly over the stitching as shown..

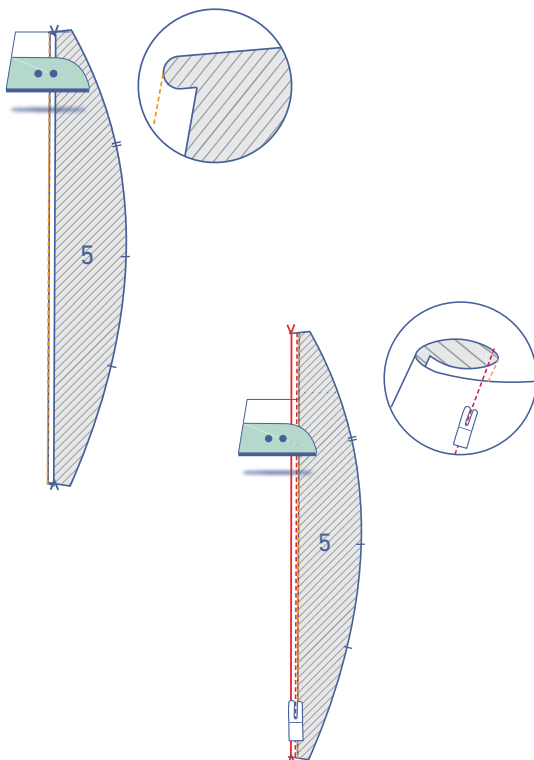


Pin and sew into place right next to the edge.



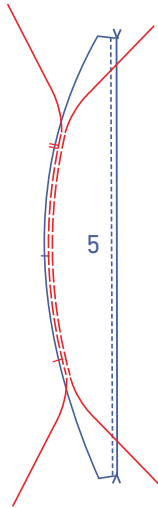
5

Stitch at 0.5 cm from the raw edge (along the straight end).

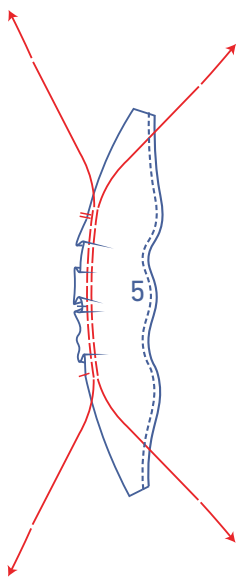


Press the raw edge over towards the wrong side.

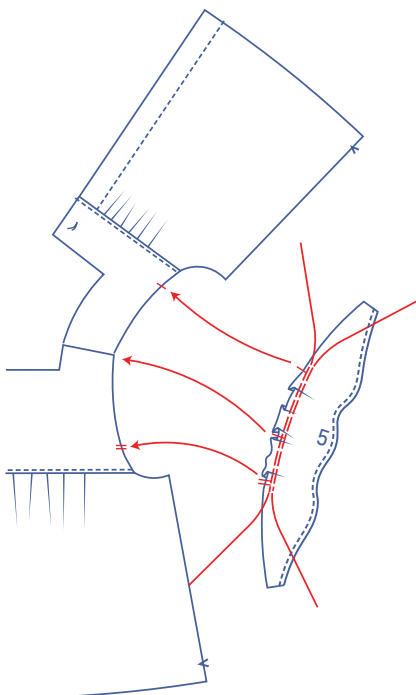
Fold up again and sew into place right next to the folded edge.



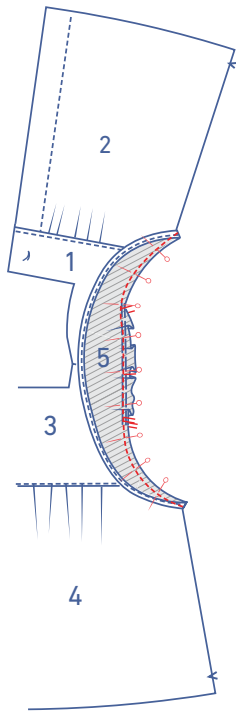
Sew 2 parallel rows of stitching along the curved end of the sleeve (5), using a long stitch length at a low thread tension. Sew just past the notches on either side. Leave the thread tails long on both ends.



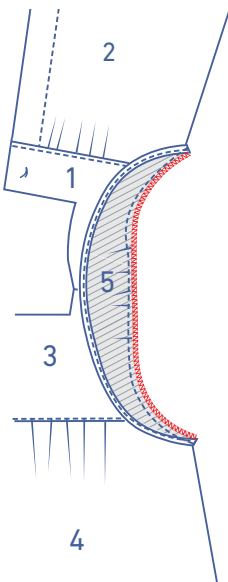
Carefully tug the ends of the gathering threads to create ruffles in the fabric.



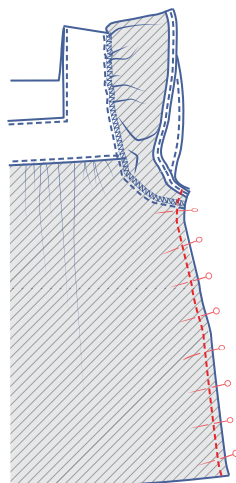
Pin the curved end of the sleeve to the armhole, right sides together. Distribute the ruffles evenly until the notches are matching.



Sew into place and remove the gathering threads.

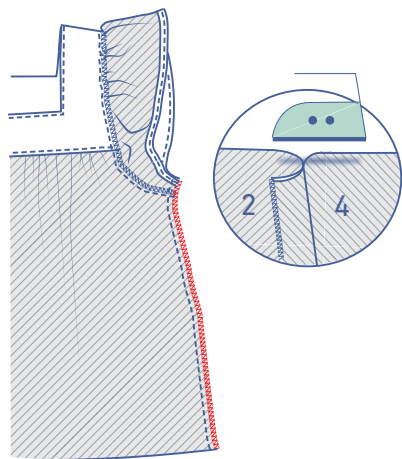


Finish the raw edges together with overlock stitching.

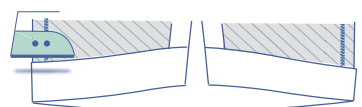


6

Pin and sew the side seams and the small seam at the bottom of the sleeve.

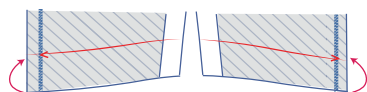
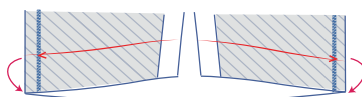


Finish the raw edges together with overlock stitching.
Press the seam allowance towards the front.

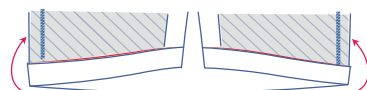


7

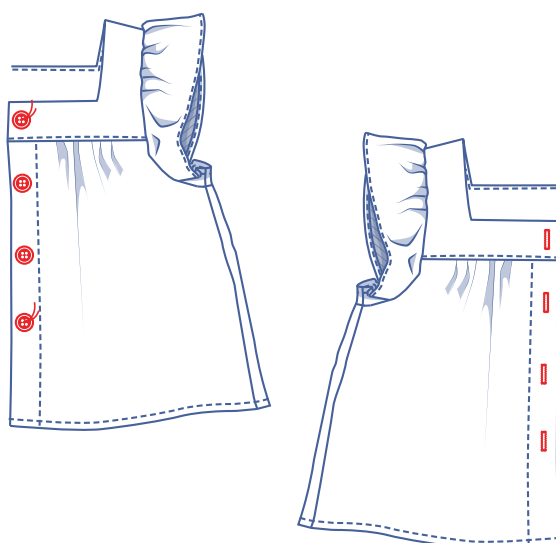
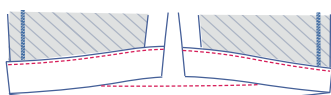
Press the hem allowance up onto the wrong side and fold back open.



Fold the raw edge to the pressed fold line and then fold up again.



Sew the hem allowance into place, right next to the folded edge.



8

Sew the buttons on and make buttonholes to match.
The position of the top and bottom buttons has been marked on the pattern for you. Divide the distance equally to determine the position of the other buttons.