

# Billie by Fibre ⚡ood



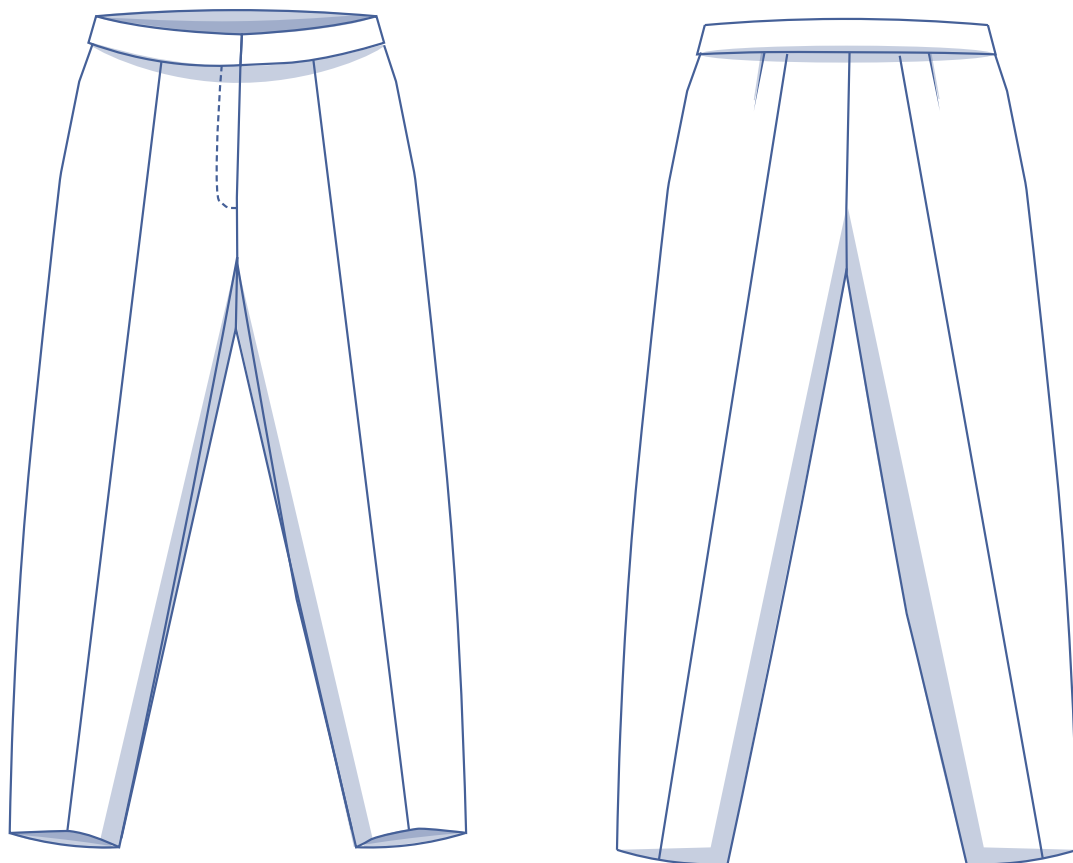
# Billie by Fibre ⚡ood

\*\*\*✱✱



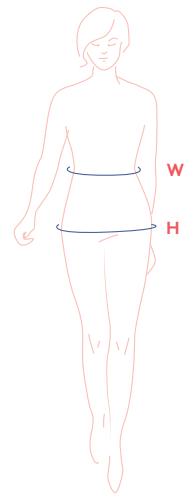
32 - 58

The Billie trousers are a must-have for your wardrobe. A true classic with narrow legs tapered towards the hem and a cropped ankle length. Not too wild about trousers that short? Just lengthen them until they're the perfect length for you! The waistband sits just below the natural waist and features convenient hidden pockets in the side seams. Combine Billie with the [Kai blazer](#) in Issue No. 4 and you've got suit of dreams. We love Billie styled with the Vita T-shirt and a pair of trainers!



## size chart

size (EU)	32	34	36	38	40	42	44	46	48	50	52	54	56	58
UK	4	6	8	10	12	14	16	18	20	22	24	26	28	30
US	0	2	4	6	8	10	12	14	16	18	20	22	24	26
W (cm)	66	68	70	74	78	82	84	88	94,5	101	107,5	114	120,5	127
W (inches)	26	26.8	27.6	29.1	30.7	32.3	33.1	34.6	37.2	39.8	42.3	44.9	47.4	50
H (cm)	86	90	94	97	100	103	106	109	115	120	125	130	135	140
H (inches)	33.9	35.4	37	38.2	39.4	40.6	41.7	42.9	45.3	47.2	49.2	51.2	53.1	55.1

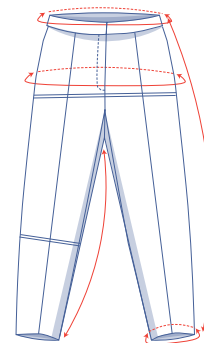


**Waist (W):** measure horizontally around the narrowest part of the waist.

**Hips (H):** measure horizontally around the widest part of the lower body.

## finished garment measurements (in cm)

This measurements in the table below serve as a reference. Ease has been added to the width measurements (in addition to the exact body measurements) for a more comfortable fit and to achieve a particular cut.



size	32	34	36	38	40	42	44	46	48	50	52	54	56	58
side length*	91.5	92	92.5	93	93.5	94	94.5	95.25	95.75	96.25	96.75	97.25	98	98.5
inseam length	63.75	63.75	64	64	64	64	64.25	64.25	64.5	64.5	64.75	65	65.25	65.25
waistline**	72	74	76	80	84	88	90	94.25	100.5	107	113.5	119.75	126.25	132.75
hips	93.5	97.5	101.5	104.5	107.5	110.5	113.5	116.5	122.5	127.5	132.5	137.5	142.5	147.75
hem circumference	33	34	35	36	37	38	39	40	41	42	43	44	45	46

\* Including the waistband.

\*\* Be sure to remember that this circumference is under the natural waist.

Compare the stated lengths to the measured or desired lengths. **Shorten** or **lengthen** the trouser legs and rise by cutting the pattern pieces at the indicated double lines and then spreading the pattern pieces out X cm from each other or overlapping them, where necessary. Make sure that the CF and CB lines and the side seams are always straight.



## IMPORTANT

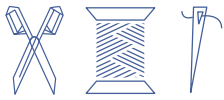
Adjust the fabric to be used based on these alterations.

## fabric advice



The Billie trousers are versatile when it comes to fabric. Choose from cotton, wool or suiting and have fun with prints or solid colours. This pattern works best in fabrics with some structure. Try to avoid fabrics with too much drape. Find out all the facts about the Fibre Mood fabric collection [here](https://www.fibremood.com/en/fabrics) or on [www.fibremood.com/en/fabrics](https://www.fibremood.com/en/fabrics).

## supplies



- Thread
- Iron-on interfacing: max. 40 cm
- Snaps or buttons (Ø 2 cm): 1
- Zip: 12 cm (sz 32-44) – 14 cm (sz 46-58)
- Fabric: see table

fabric used (in cm) F collection	32	34	36	38	40	42	44	46	48	50	52	54	56	58
purple crepe fabric width 147 cm	145	145	145	145	145	145	145	145	220	220	220	225	230	235
black & pink herringbone fabric width 150 cm	145	145	145	145	145	145	145	145	220	220	220	225	230	235

Discover the Fibre Mood fabric collection and the accompanying fabric layouts [here](http://www.fibre mood.com/en/fabrics) or on [www.fibre mood.com/en/fabrics](http://www.fibre mood.com/en/fabrics).

fabric used (in cm) standard	32	34	36	38	40	42	44	46	48	50	52	54	56	58
fabric width 140 cm	145	145	145	145	145	145	145	215	220	220	220	230	235	235

The corresponding fabric layout can be found on the last page of these sewing instructions.

[illegible]

# sewing instructions



The method used to hem the garment will depend on your chosen fabric. The pieces are always sewn together with right sides facing, unless stated otherwise.

F front

B back

RF right front

LF left front

CF centre front

CB centre back



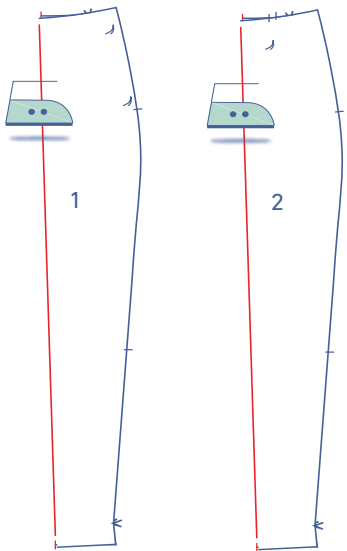
right side



wrong side

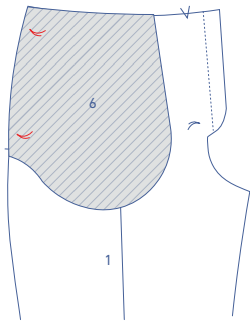


iron-on interfacing

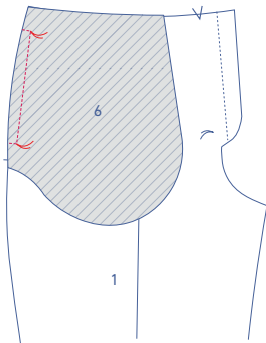


**1**

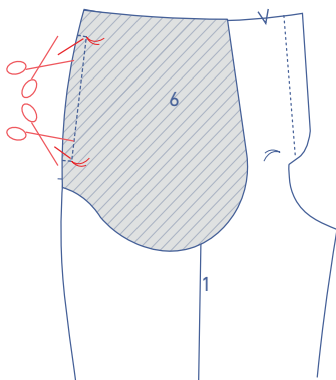
Fold the front (1) and back (2) in half lengthwise with the right side of the fabric facing outwards at the nicks on the waist and hemline. Press the fold line.



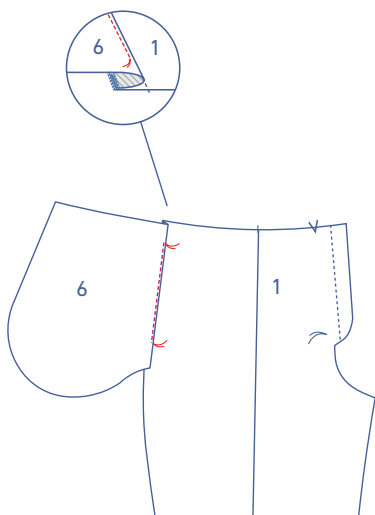
Place the pocket (= inner pocket bag) (6) onto the front with the basting threads matching and right sides together.



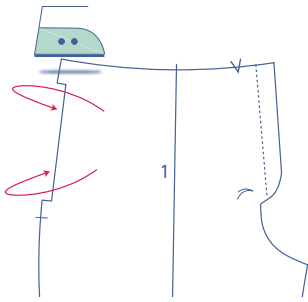
Sew a perpendicular line from the side seam in a 'U' from basting thread to basting thread.



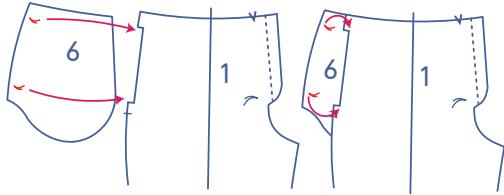
Snip diagonally towards the corners of the basting threads at the top and bottom.



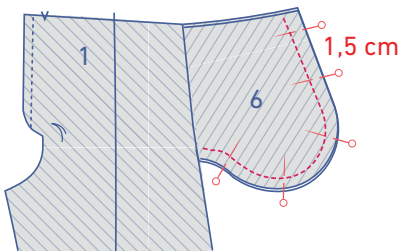
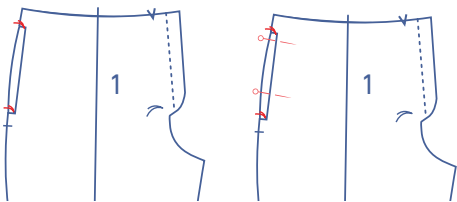
Fold the pocket and the seam allowance away from the pants and understitch the pocket at 2 mm next to the seam through the pocket and seam allowance.



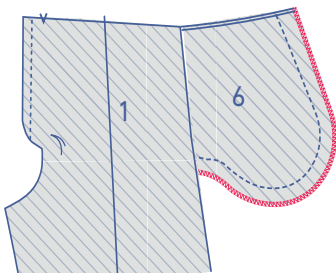
Fold the pocket all the way onto the wrong side of the front.  
Press neatly flat.



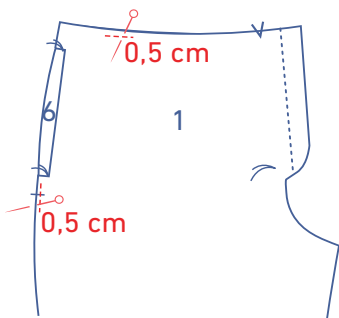
Place the remaining pocket piece (6) (= pocket opening)  
under the front with the right side facing up and the basting  
threads matching the basting threads in the corners.  
Neatly pin the pocket pieces to the front.



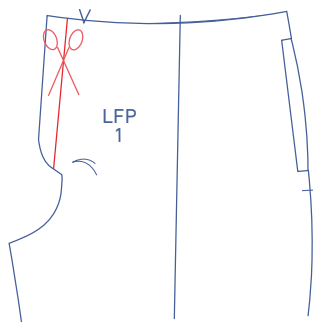
Fold the front out of the way and pin the curves of the  
pocket pieces and sew at 1.5 cm.



Finish the raw edges together with overlock stitching.

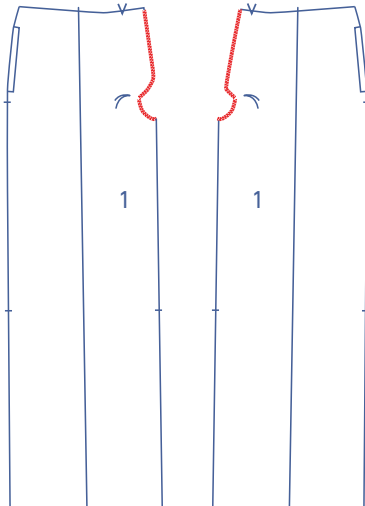


Pin and sew the pocket pieces at 0.5 cm from the top and  
side.

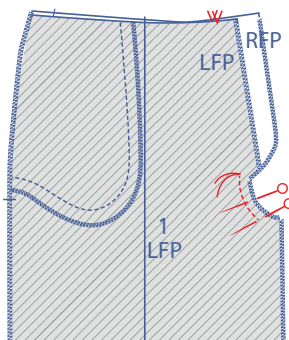


## 2

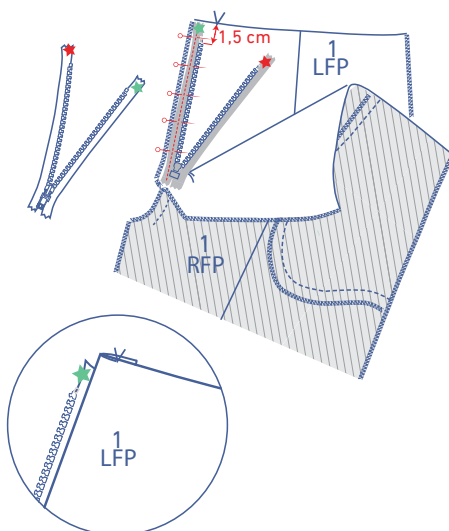
Cut off a section of the LF shaped fly along the indicated line.



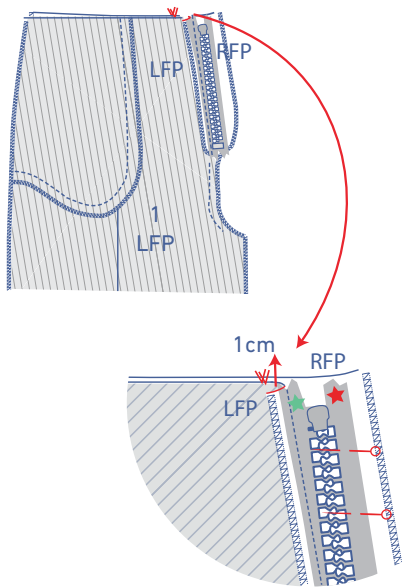
Finish the CF edges with overlock stitching.



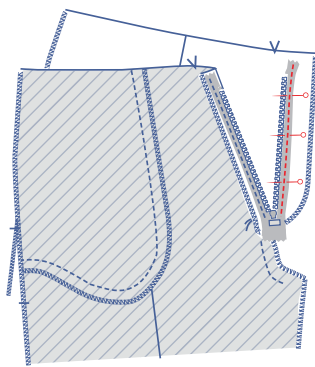
Pin the RF and LF together. Make sure that the V notches on the CF are matching. The fly of the RF should extend slightly past the LF. Sew the CF seams in place starting at the basting threads up to around 2 cm from the edge of the inseam.



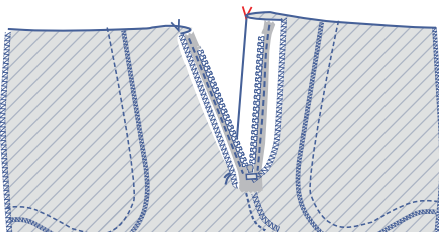
First lay the zip with the right side facing up. Open the zip and flip the zip tape marked with a small green star over to the right and onto the LF. The edge of the zip tape should lie next to the overlock stitching. The zip teeth should sit 1.5 cm under the top edge. Pin and sew into place at 1 cm from the CF seam (= the middle of the zip tape) using the zipper presser foot. Next fold the zip tape back to the left.



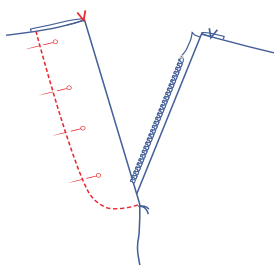
Close the zip and fold both front pieces with the right sides facing each other. The V notches indicating the CF should match perfectly. Smooth both pieces flat and pin the zip tape (marked with a red star) in place to the RF fly.



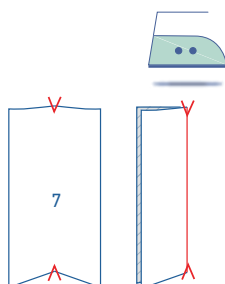
Open the zip and sew the zip tape in place using the zipper presser foot.



Fold the RF shaped fly over at the V notch.



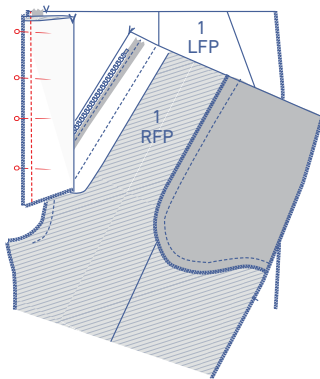
Pin in place and top stitch (from the right side) following the curve of the fly.



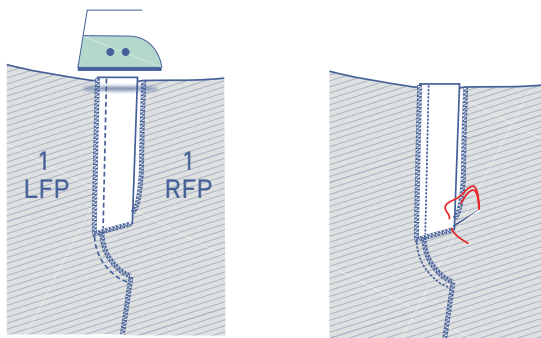
Fold the LF fly (7) in half lengthwise at the V notches with the right side of the fabric facing inwards.



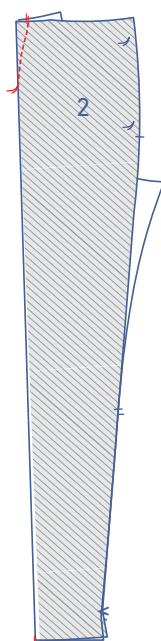
Finish the raw edges together at the side and bottom with overlock stitching.



Pin and sew the overlocked raw edges of the fly to the seam allowance of the LF.



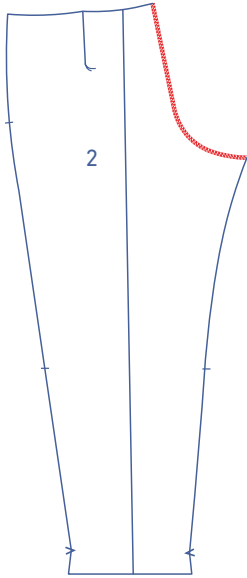
Press the fly to the side and close the zip. Sew the bottom of the shaped RF fly and the LF fly together with just a few hand stitches.



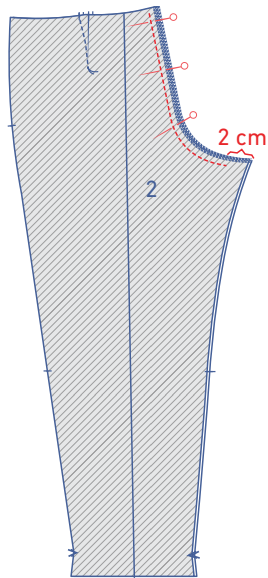
### 3

Fold the back (2) in half with the right side of the fabric facing inwards. Ensure that all the waistband nicks on the waistband seam are matching.

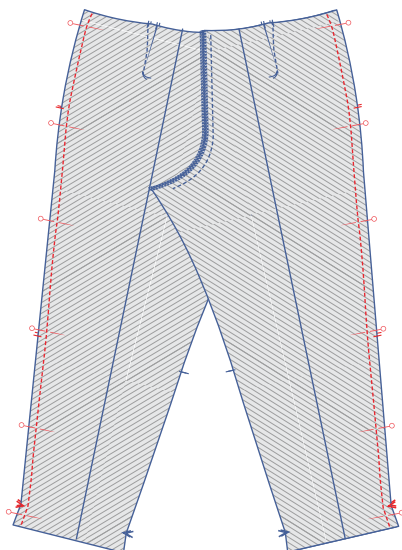
Sew the dart towards the basting thread. Sew 1 cm past the basting thread, so that you've sewn past the fabric. Snip the thread and make a knot. Press the dart towards the CB.



Finish the CB seams with overlock stitching.

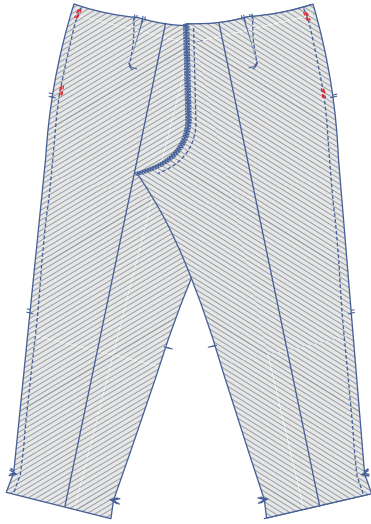


Pin and sew the CB seams stopping at approximately 2 cm in from the edge of the inseam.

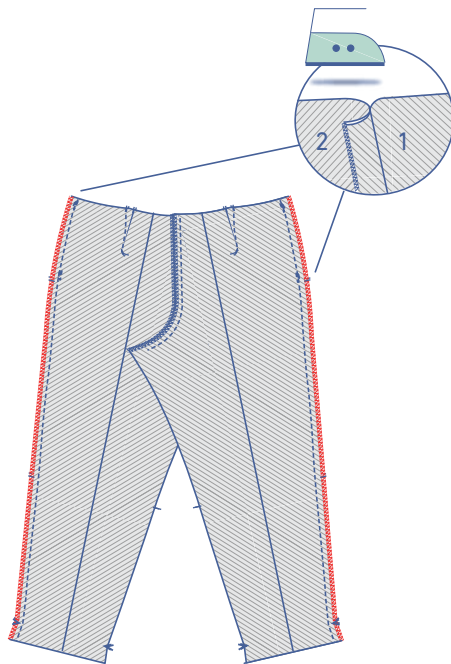


## 4

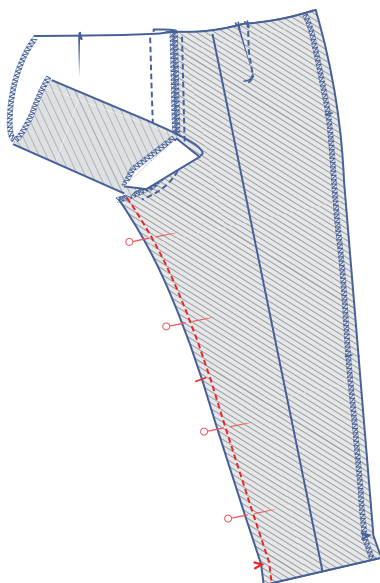
Pin and sew the side seams of the front and back. Make sure not to sew the pocket opening closed.



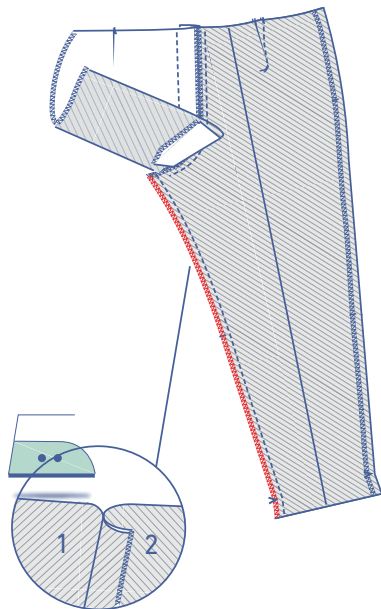
Add extra reinforcement stitching at the top and bottom of the pocket opening.



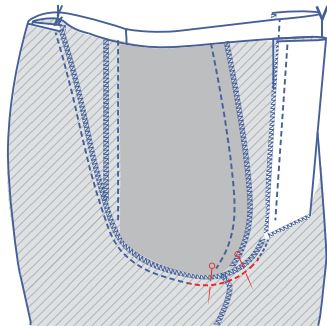
Finish the raw edges together with overlock stitching. Press the seam allowance towards the back.



Pin and sew the inseams.

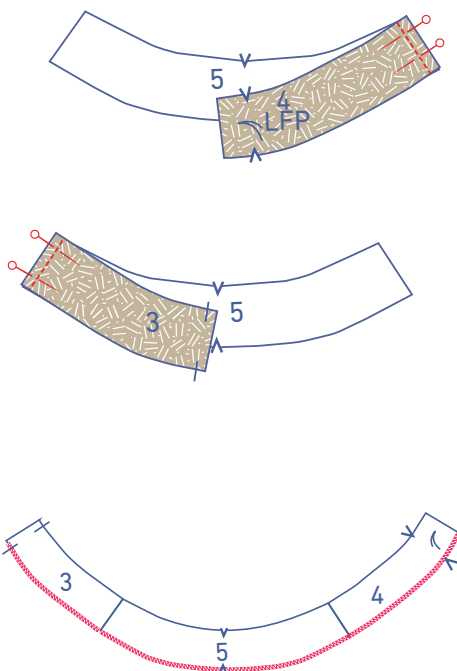


Finish the raw edges together with overlock stitching.  
Press the seam allowance towards the back.



**5**

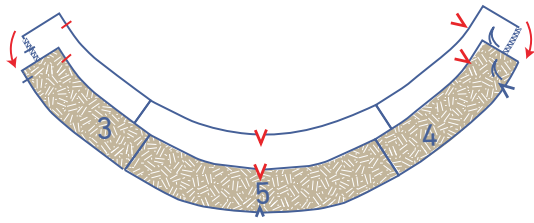
Slide one trouser leg into the other with the right sides of the fabric facing. Pin and sew the remaining crotch seam.



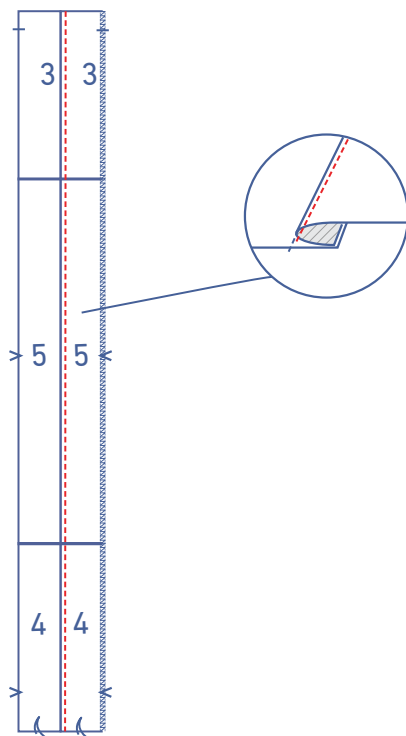
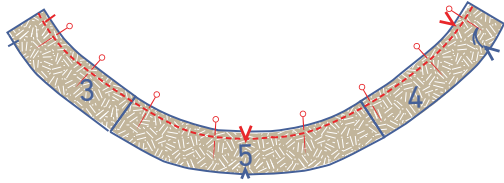
**6**

Pin and sew each of the side seams of the waistband RF (3), waistband back (5) and waistband LF (4). Press open the seam allowances.

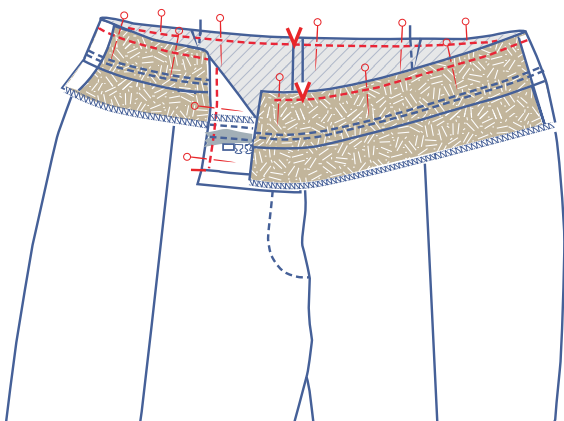
Finish the bottom of the waistband with overlock stitching, so that the waistband LF (4) is on the right side. Repeat for second waistband.



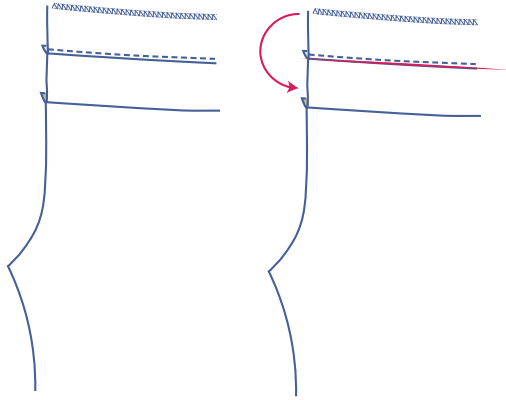
Pin and sew the top of both waistbands right sides together with the corresponding nicks matching.



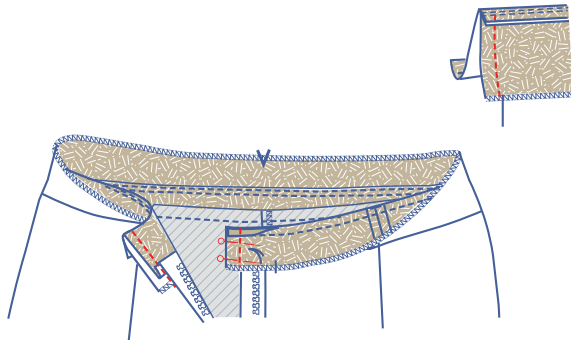
Fold the waistbands open so that the right sides of both are facing up and fold the seam allowance over towards the waistband with the overlocked bottom. At 2 mm from the seam, sew through all layers of the overlocked waistband.



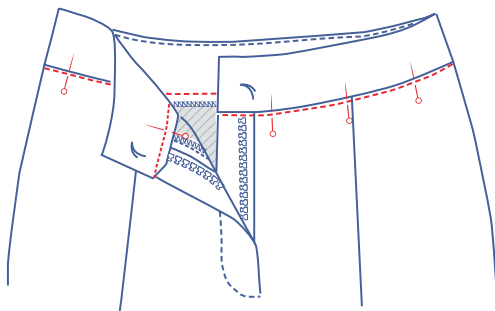
Pin and sew the remaining raw edge of the waistband to the top of the trousers with right sides together and with the corresponding nicks matching. There should be 1 cm of seam allowance left on each side of the CF.



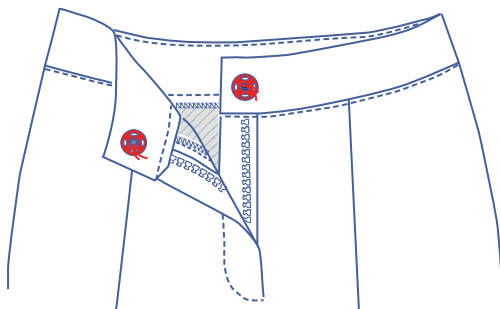
First, open the waistband all the way out. Now, fold it in half lengthwise so that the right sides of both waistbands are facing.



Sew the short ends closed and trim the corners. Next, turn waistband the right way out.



Pin the waistband into place along the right side of the trousers and stitch in the ditch along the seam.



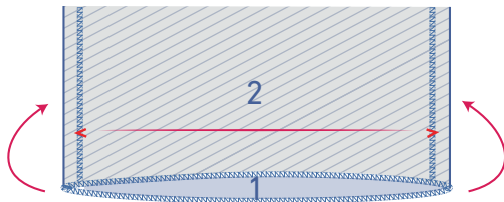
**7**

Sew the snap on at the indicated place or make a horizontal buttonhole in the waistband RF and sew the button on the waistband LF.

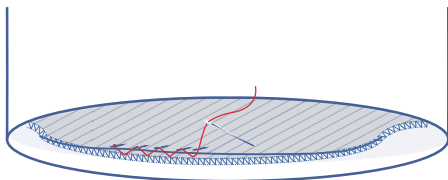


**8**

Finish the hem with overlock stitching.



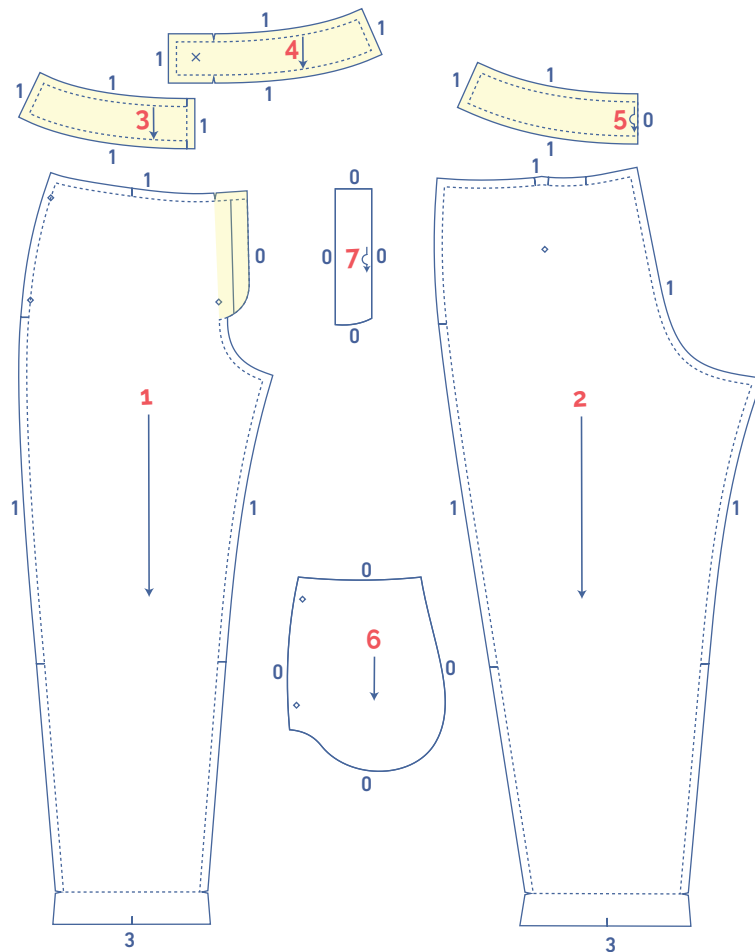
Press the hem allowance over to the V notch.



Sew the hem allowance into place.

## pattern pieces & seam allowances (in cm)

To sew the garment as described in the instructions, you need to draw the illustrated seam allowances around the paper pattern pieces before cutting them out.



- 1. front: 2x
- 2. back: 2x
- 3. RF waistband: 2x
- 4. LF waistband: 2x
- 5. waistband facing back: 2x on fabric fold
- 6. pocket: 4x\*
- 7. fly LF: 1x on fabric fold

\* If you're using a thick fabric, cut 2 of the 4 pocket pieces (= the inner pocket bags) out of lining material in a light-weight cotton.

**IMPORTANT**

The pieces highlighted in light yellow have iron-on interfacing attached to the wrong side.

## fabric layout for fabrics 140 cm wide

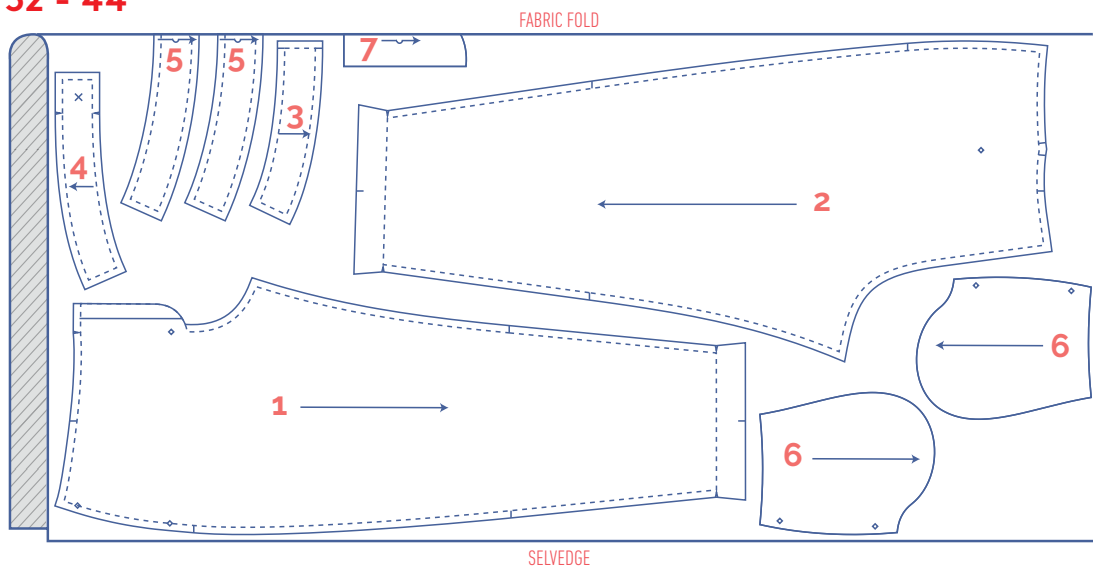
Before we begin sewing, make sure to transfer all markings onto your fabric:

- Mark the position of the snap or button by hand with basting thread (↷) by basting through the middle of the (X).
- Mark the end of the dart/dart equivalent and the zip by hand with basting thread (↷) by basting through the middle of the (◇).

Mark the following important points on the outline of the pattern:

- Nick the pattern paper and fabric at the places where a single vertical line (I) and double vertical lines (II) are indicated.
- Cut a notch out of the fabric at a V notch or on the finished hemline.
- Cut a notch out of the pieces that lie on the fabric fold to mark the middle of these pieces.

### 32 - 44



### 46 - 58

