

Alexa by Fibre ood



Alexa by Fibre Mood

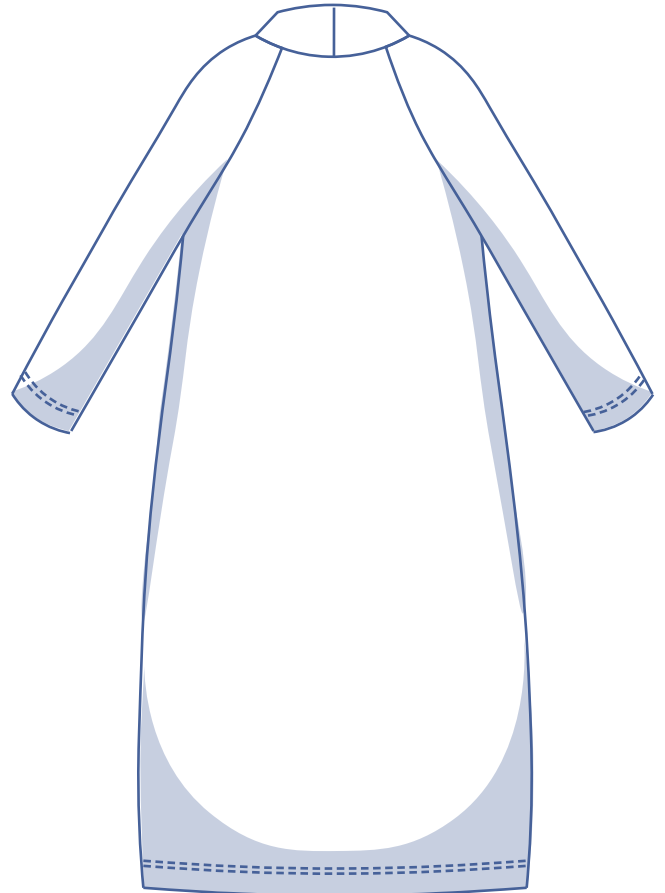
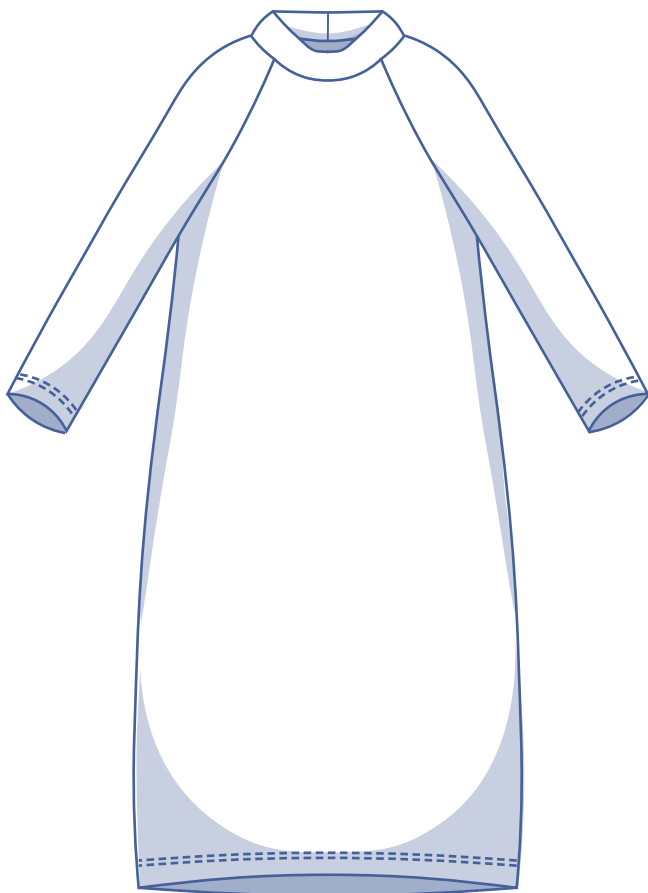


0 - 26

When it comes to comfort, Fibre Mood has you covered! The Alexa dress is a winter staple with long raglan sleeves and a standing collar. It's made for stretch fabrics of every kind; think ribbed, viscose, velvet or even a heavier knitted jacquard.

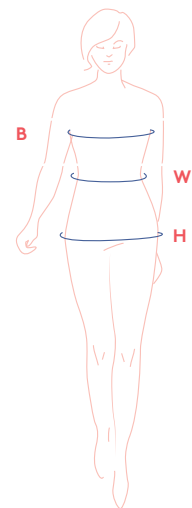
Give Alexa a fresh sporty vibe with a contrasting ribbon feature down the sides or sleeves. Or sew it up in earthy hues to chase away the winter blues. Mini or maxi length?

The choice is yours...



size chart

size (US)	0	2	4	6	8	10	12	14	16	18	20	22	24	26
B (inches)	29.9	31.5	33.1	34.6	36.2	37.8	39.4	40.9	43.3	45.7	48	50.4	52.8	55.1
W (inches)	26	26.8	27.6	29.1	30.7	32.3	33.1	34.6	37.2	39.8	42.3	44.9	47.4	50
H (inches)	33.9	35.4	37	38.2	39.4	40.6	41.7	42.9	45.3	47.2	49.2	51.2	53.1	55.1



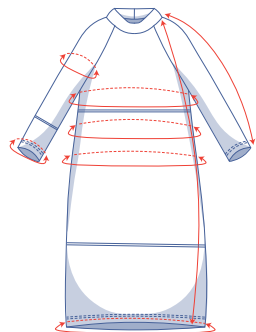
Bust (B): measure horizontally around the widest part of the bust.

Waist (W): measure horizontally around the narrowest part of the waist.

Hips (H): measure horizontally around the widest part of the lower body

Choose your size based on your bust measurement. If your hips are wider than the corresponding hip measurements in the size chart, look at the chart below with hip measurements to see whether there is enough room at the hips or whether it will need to be altered. It's easy to do. Just trace the pattern and merge the lines of the sizes together to create a custom size that suits you best.

finished garment measurements (in inches)



This chart's measurements are based on the fabric type and serve as a reference. For a more comfortable fit and to achieve a particular cut (fitted, loose or oversized), ease has been added to the width measurements (in addition to the exact body measurements). Depending on the desired fit, you could choose to size up or down accordingly.

size	0	2	4	6	8	10	12	14	16	18	20	22	24	26
length	44.75	45	45.25	45.25	45.50	45.75	46.75	47	48.50	48.75	49	49.50	49.75	50
sleeve length*	25.75	25.75	26	26	26	26.25	26.25	26.50	26.50	26.75	26.75	27	27	27.25
bust	32.75	34.25	36	37.50	39	40.75	42.25	43.75	46.25	48.50	51	53.25	55.75	58
waistline	33.25	34	34.75	36.25	38	39.50	40.25	41.75	44.50	47	49.50	52	54.75	57.25
hips	36.25	38	39.50	40.75	41.75	43	44.25	45.25	47.75	49.75	51.75	53.75	55.50	57.50
upper arm circumference	11.50	12	12.50	13	13.50	14	14.50	15	16.50	17.50	18.25	19	20	20.75
hem circumference	39	40.50	42	43.25	44.50	45.50	46.75	48	50	51.75	53.75	55.75	57.75	59.75
sleeve hem circumference	8.75	9	9.25	9.50	9.75	9.75	10	10.25	10.50	10.75	10.75	11	11.25	11.50

* Including the shoulder length.

Compare the stated lengths to the measured or desired lengths. **Lengthen** or **shorten** the dress and/or the sleeves by cutting the pattern pieces at the place(s) indicated with double lines on the illustration and then spreading the pattern pieces out X inches from each other or overlapping them where needed. Make sure that the CF and CB lines and the side seams are always straight.



IMPORTANT

Adjust the amount of fabric to be used based on the alterations.

supplies



- Thread
- Fabric: see table

fabric used (in yards) standard	32	34	36	38	40	42	44	46	48	50	52	54	56	58
fabric width 55"	2	2	2	2	2	2 ¾	2 ¾	3	3 ½	3 ½	3 ½	3 ½	3 ½	3 ½

The corresponding fabric layout can be found on the last page of these sewing instructions.

fabric advice



Alexa is intended for jersey only! In practice, jersey (or stretch fabric) is what all fabrics that are knitted and not woven have come to be called. Essentially, that means that the jersey doesn't contain any separate warp and weft threads, just a single thread that hold together via loops like knitting. The loops create the fabric's elasticity. Jersey can be made from all kinds of fibres: cotton, viscose, wool, bamboo, etc. We chose a ribbed jersey and a velvet jersey for the Alexa!

sewing instructions



The method used to finish the garment will depend on your chosen fabric. The pieces are always sewn together with right sides facing, unless stated otherwise.

F front

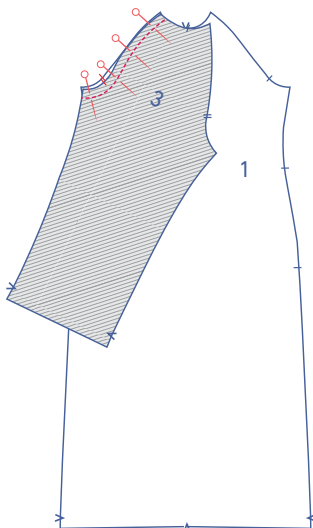
B back

CF centre front

CB centre back

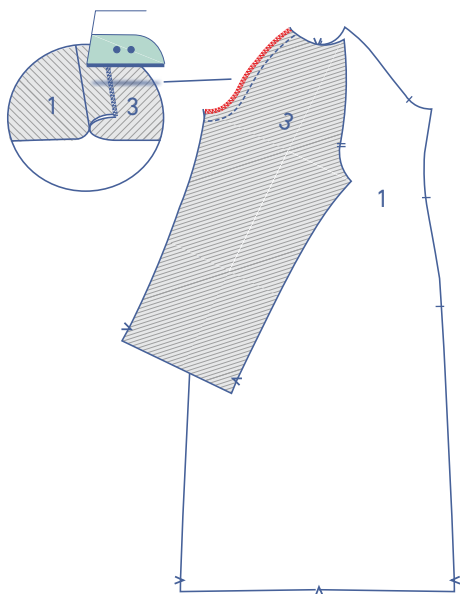
 right side

 wrong side

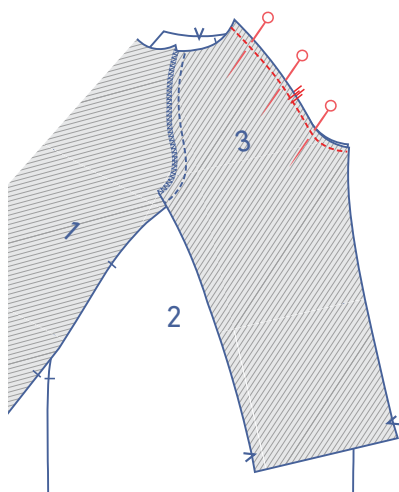


1

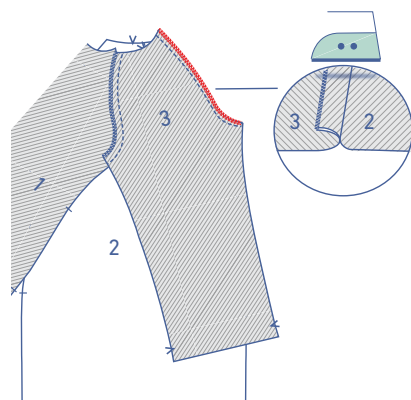
Pin and sew the sleeve (3) to the front (1) with the corresponding single nicks matching.



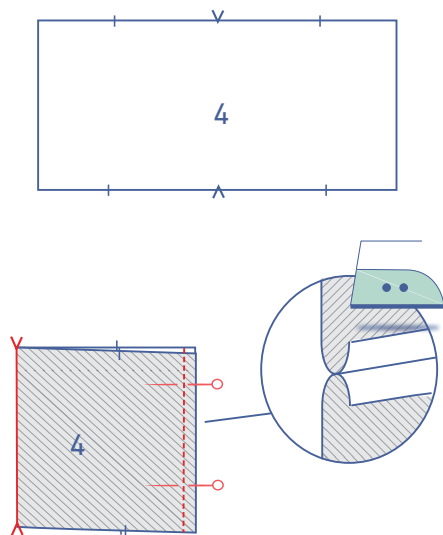
Finish the raw edges with overlock stitching and press the seam allowance towards the sleeve.



Pin and sew the sleeve (3) to the back (2) with the corresponding double nicks matching.

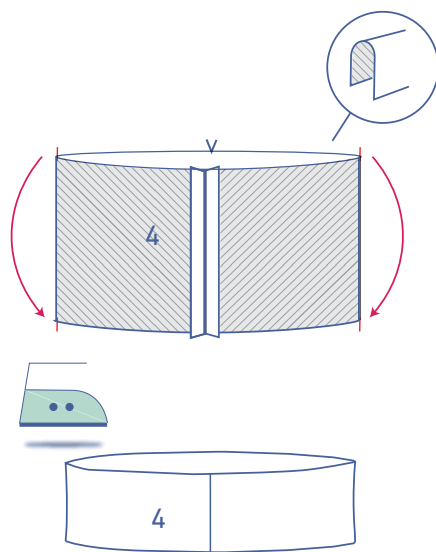


Finish the raw edges with overlock stitching and press the seam allowance towards the sleeve.

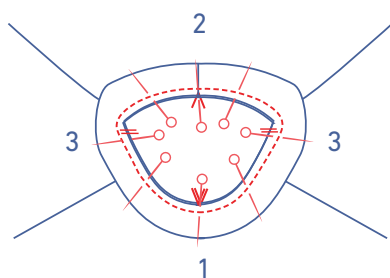


2

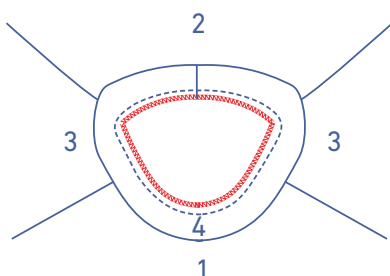
Fold the collar (4) in half widthwise with the right side of the fabric facing inwards. Pin and sew the CB seam into place with a stretch stitch. Press open the seam allowance.



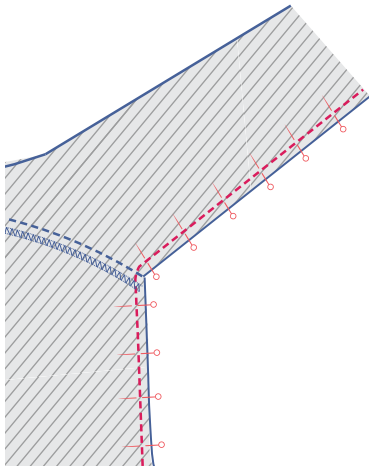
Press the collar in half lengthwise with the right side of the fabric facing outwards.



Pin both of the collar's raw edges to the neckline and sew into place with a stretch stitch. The collar's CB seam should line up with the V notch on the back, and the collar's nicks should line up with the nicks on the sleeve that mark the location of the shoulder.

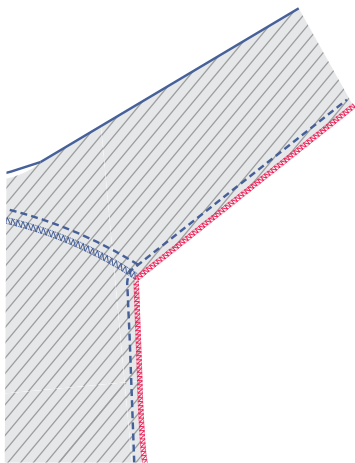


Finish the raw edges together with overlock stitching.

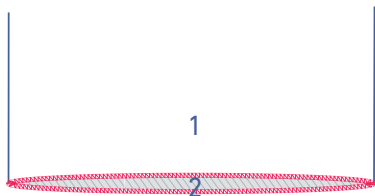


3

Pin and sew the side and underarm seams.

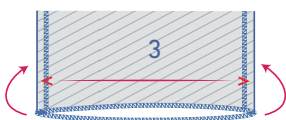
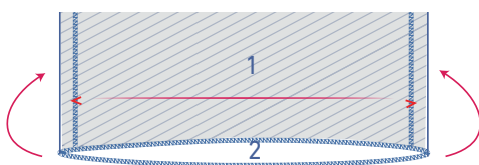


Finish the raw edges together with overlock stitching.

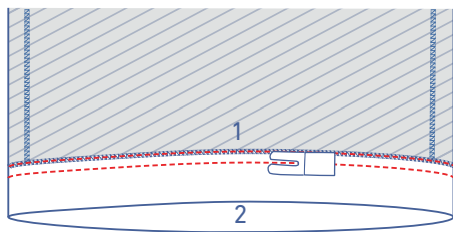


4

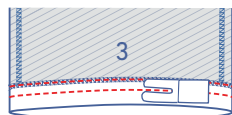
Finish the hem and the sleeve hems with overlock stitching.



Press the hem allowance over at the V notches.



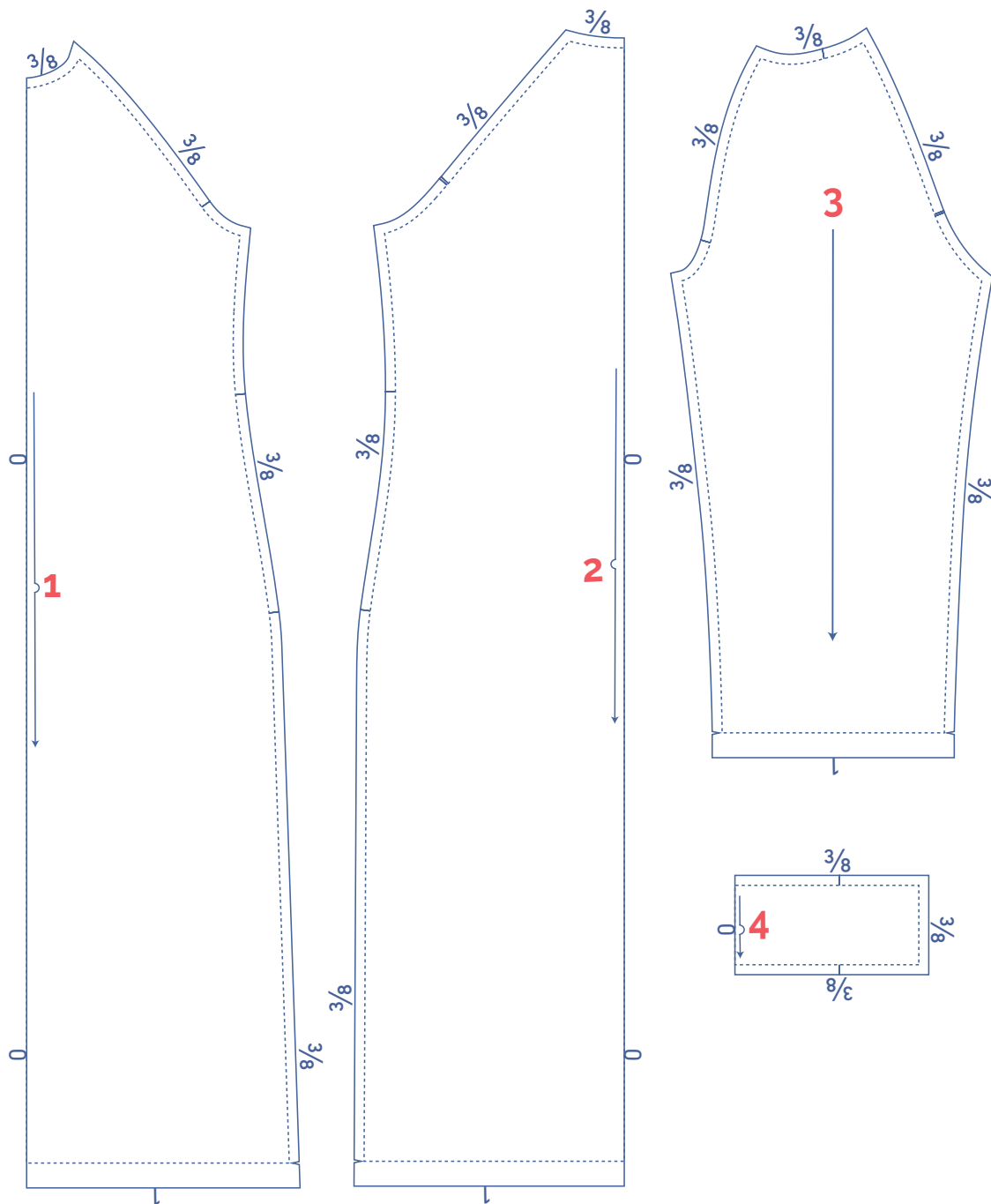
Sew the hem allowance all the way around in the overlock stitching with two rows of topstitching and using a stretch stitch.



pattern pieces & seam allowances (inches)

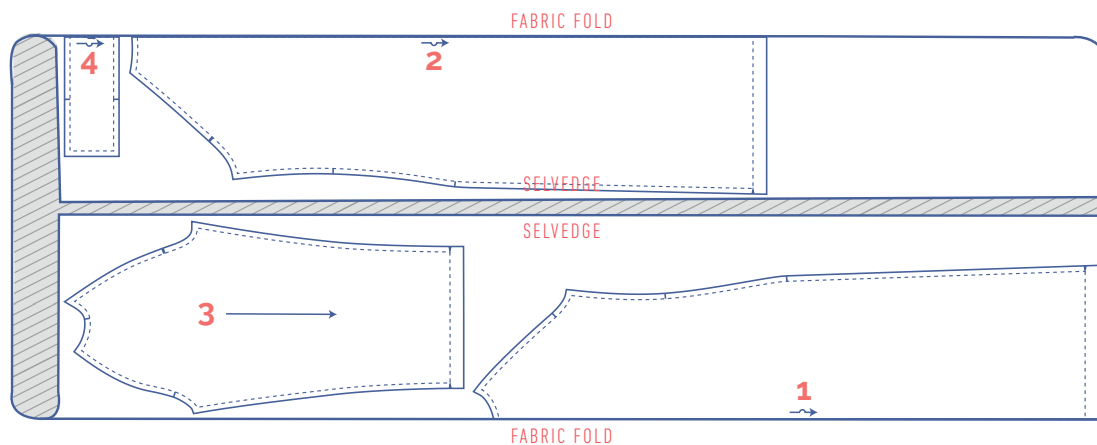
To sew the garment together as described in the instructions, you must draw the illustrated seam allowances around the paper pattern pieces before cutting them out.

1. front: 1x on fabric fold
2. back: 1x on fabric fold
3. sleeve: 2x
4. collar: 1x on fabric fold

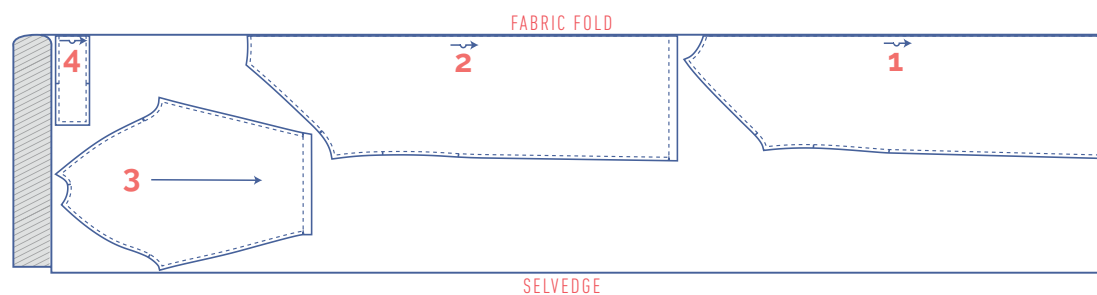


fabric layout for fabrics 55" wide

0 - 8



10 - 26



- Nick the pattern paper and fabric at the places where a single vertical line (I) and double vertical lines (II) are indicated.
- Cut a small corner out of the fabric at a V notch symbol or on the finished hemline.
- Cut a small corner (V notch) out of the pieces that lie on the fabric fold (—) to mark the middle of these pieces.