

## Sara by Fibre ⚡ood

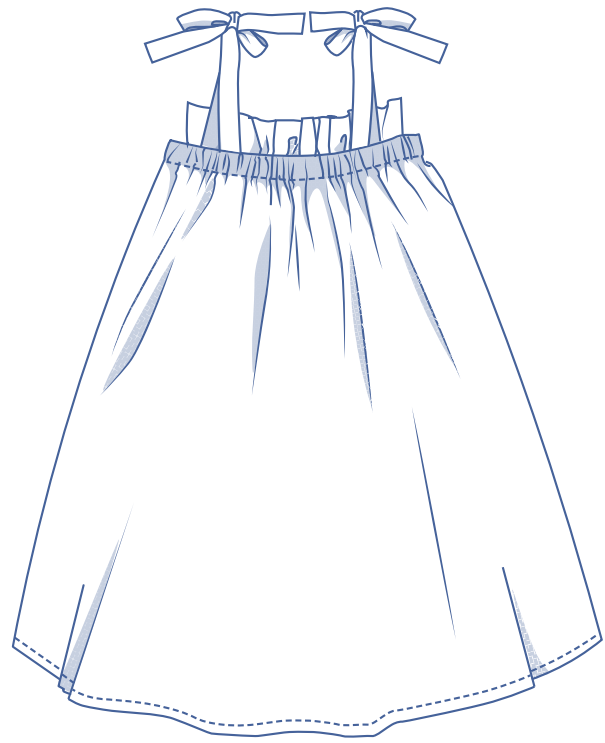
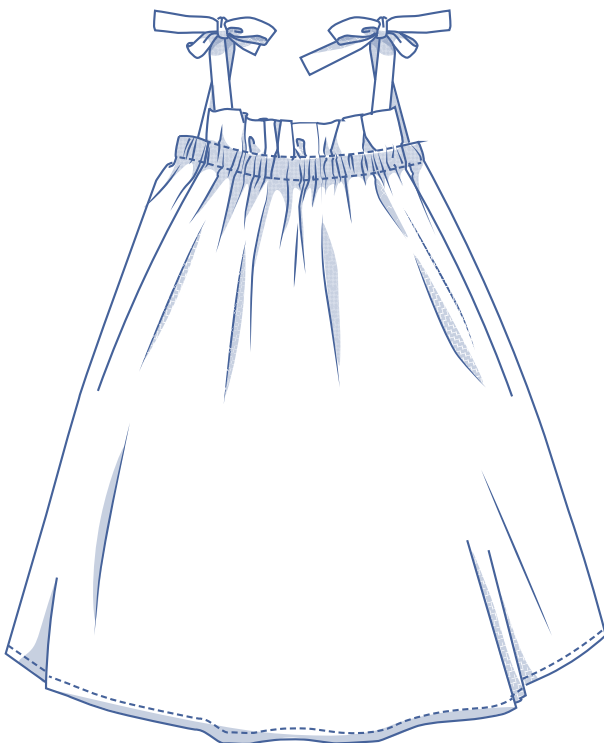
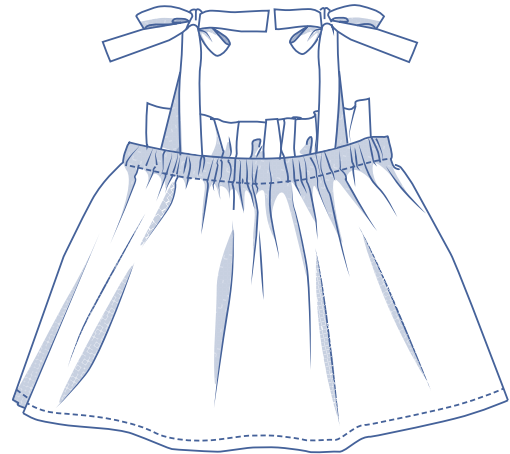
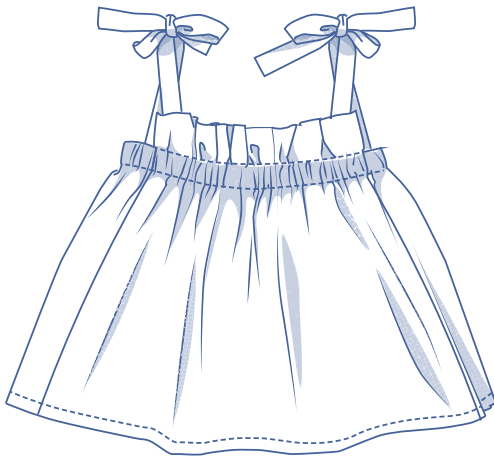


# Sara by Fibre Mood



**XS - XXXL**

The Sara top is a light item for your summer wardrobe. It is ideal for a hot day on the beach or a balmy summer's evening. The straight top has elastic at the top creating a playful wrinkled effect. There are also two shoulder ribbons that can be tied into a bow. You can easily lengthen the top to create a dress.



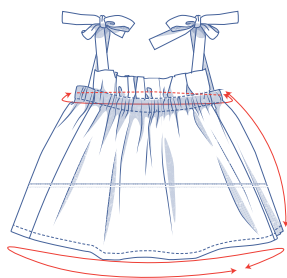
## size chart

size (EU)	XS		S		M		L		XL		XXL		XXXL		
EU	32	34	36	38	40	42	44	46	48	50	52	54	56	58	60
UK	4	6	8	10	12	14	16	18	20	22	24	26	28	30	32
US	0	2	4	6	8	10	12	14	16	18	20	22	24	26	28
C (cm)	76	80	84	88	92	96	100	104	110	116	122	128	134	140	146

**Chest (C):** measure horizontally around the fullest part of the chest.



## finished garment measurements (in cm)



size	XS	S	M	L	XL	XXL	XXXL
length (top)	38	39	40	41	42	43	44
length (short dress)	78	79	80	81	82	83	84
length (long dress)	113	113	113	113	113	113	113
width with elastic	74	82	90	98	108	120	132
width without elastic	120	132	144	156	171	189	207

### IMPORTANT

Adapt the amount of fabric based on these alterations.

Compare the stated lengths to the measured or desired lengths. **Lengthen** or **shorten** the top by cutting the pattern pieces at the height of the indicated double lines and by moving the pattern pieces X cm apart or on top of each other as required. Make sure that the CF and CB lines and the side seams are always straight.



## supplies



elastic band	XS	S	M	L	XL	XXL	XXXL
2 cm wide	77	85	93	101	111	123	135

ribbon or cord (in cm)	XS	S	M	L	XL	XXL	XXXL
length*	2x 42	2x 44	2x 46	2x 48	2x 49	2x 49	2x 49

\* These are suggested measurements for the length of the shoulder straps. The length depends on the material used. Try on the dress (make sure that the elastic is at the right height) and measure the length of the shoulder straps.

- Thread
- Elastic band: see table
- Ribbon or cord: see table (optional)
- Fabric: see table

fabric used (in cm) F collection	XS	S	M	L	XL	XXL	XXXL
white, blue striped fabric top, fabric width 140 cm	105	105	105	115	120	125	125
white fabric with thin blue-green stripes * short dress, fabric width 140 cm	140	155	200	215	230	245	265
pink fabric long dress, fabric width 140cm	180	255	255	255	255	255	255

\* The pattern pieces were cut in the other direction to create vertical stripes.

Discover the Fibre Mood fabric collection and the accompanying fabric plans [here](https://www.fibremood.com/en/fabrics) or on [www.fibremood.com/en/fabrics](https://www.fibremood.com/en/fabrics).

fabric used (in cm) standard	XS	S	M	L	XL	XXL	XXXL
top fabric width 140 cm	105	105	105	115	120	125	125
short dress fabric width 140 cm	145	185	185	190	190	195	195
long dress fabric width 140 cm	180	255	255	255	255	255	255

The corresponding fabric plan can be found on the last page of these sewing instructions.



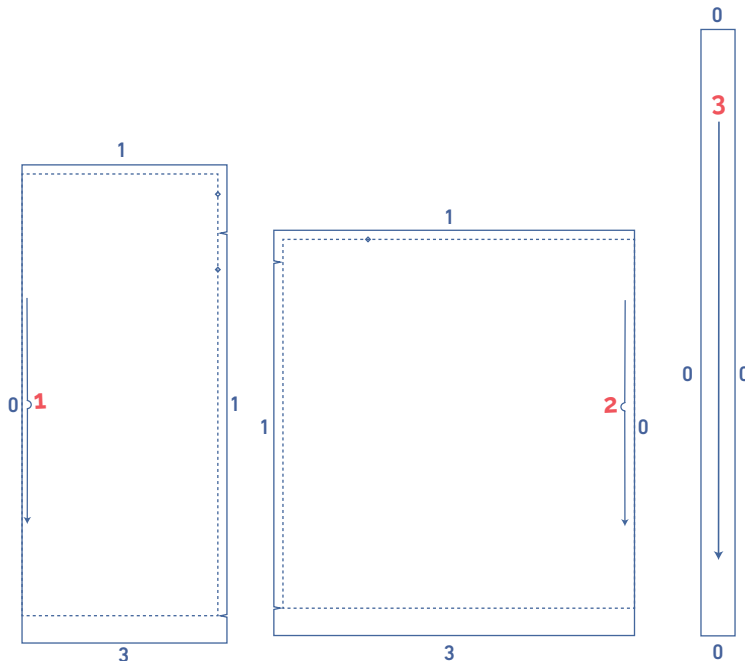
## fabric advice



You can use all kinds of fabric for this top or dress. You can select a supple flowing or somewhat stiffer fabric: linen, cotton, (viscose) crêpe or chiffon, in a brightly coloured fabric with a print or a plain fabric. Here, you can see which fabrics will suit your figure type. Discover the Fibre Mood fabric collection and the accompanying fabric plans [here](https://www.fibre mood.com/en/fabrics) or on [www.fibre mood.com/en/fabrics](https://www.fibre mood.com/en/fabrics).

## pattern pieces & seam allowances (in cm)

To prepare the pattern for cutting you must first add the illustrated seam allowances around the paper pattern pieces as shown below.



1. front: 1x on fabric fold
2. back: 1x on fabric fold
3. shoulder straps 4x, you draw this pattern piece yourself. Draw a rectangle using the measurements in the table (in cm).

size	XS	S	M	L	XL	XXL	XXXL
length	55	57	59.5	61.5	65	67	70
width	7	7	7	7	7	7	7

Mark the following important points on the pattern:

- Mark the position of the (top of) casing and the shoulder straps with tacking thread (↪) by indicating the middle point (◇) with needle and thread.

Mark the following important points on the outline of the pattern:

- Cut a small corner out of the fabric where a √ symbol has been made and on the finished hemline.

# sewing instructions



The method used to finish sewing the garment seams depends on the fabric used. The pieces are always sewn together with right sides facing, unless stated otherwise.

F front

B back



right side



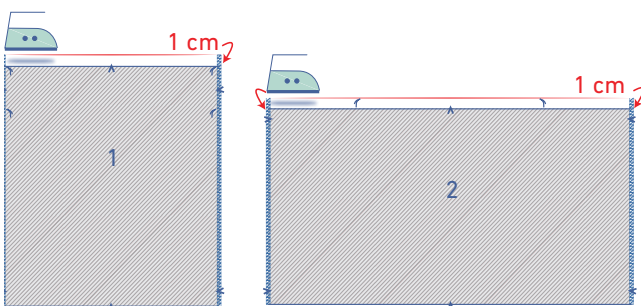
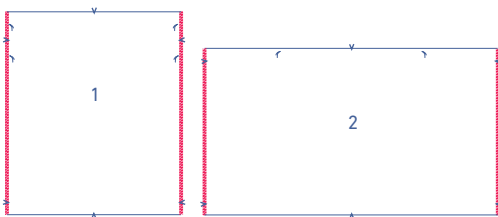
wrong side



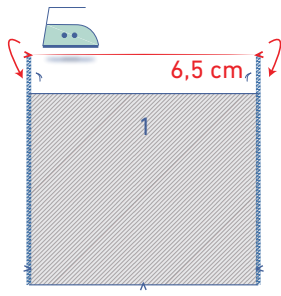
elastic band

**1**

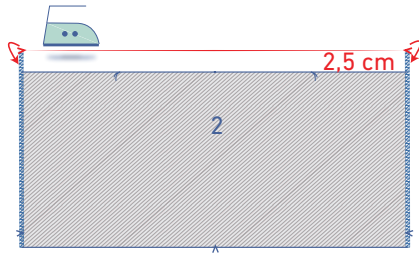
Finish the side seams of the front (1) and the back (2) with an overlock stitch.



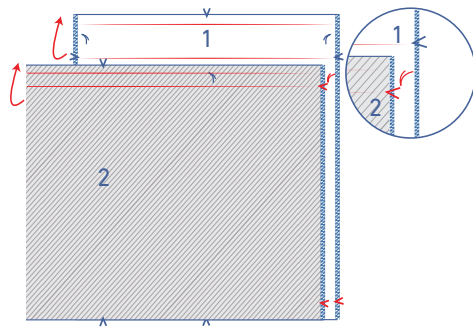
Iron the top of the seam allowance (1 cm) of both the F as well as the B to the wrong side.



Iron back the extended facing section of the F (= 6.5 cm) at the position of the V nick to create fold lines.

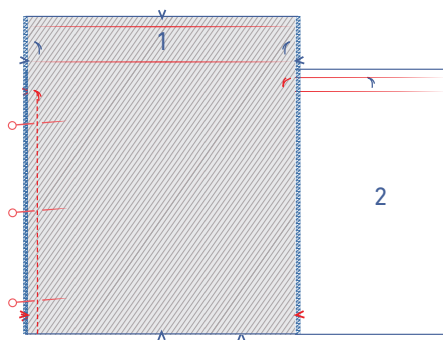


Iron back the extended facing section of the B (= 2.5 cm) at the position of the V nick to create fold lines.

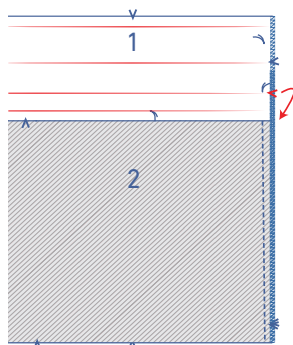


## 2

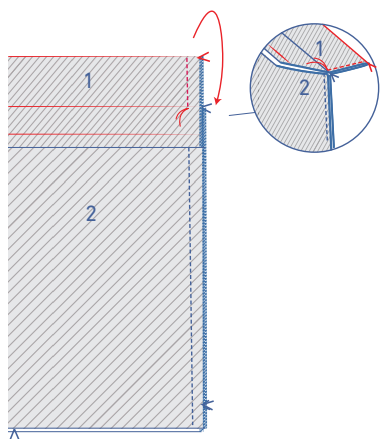
Fold the extended facing sections to the top and place the side seams together. The tacking thread of the F panel matches up with the V nick of the B panel.



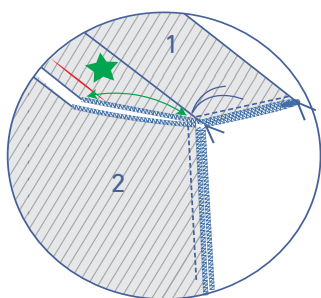
Sew the side seams up to the tacking thread.



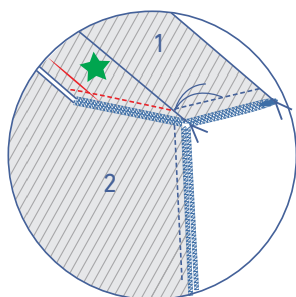
Fold the extended B panel facing to the bottom.



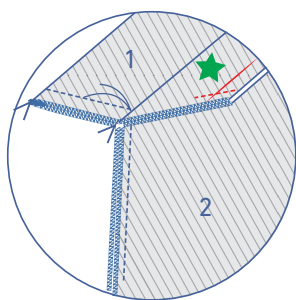
Fold the extended facing of the F panel downwards at the position of the V nick so the tacking threads match up exactly. Sew the side of the extended facing of the front panel (above the tacking) from the ironed fold line to the tacking thread.



The unstitched part of the extended facing of the F and B panels (indicated with a green star) will form the casing for the elastic.

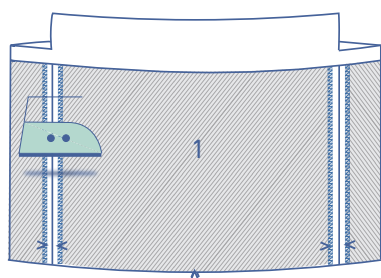


Sew one side seam of the casing (green star) completely closed up to the tacking thread.



In the other side seam you sew a piece from the top and leave an opening above the tacking so you can thread the elastic later.

You fold the rest of the garment to one side so you can stitch the side seams.



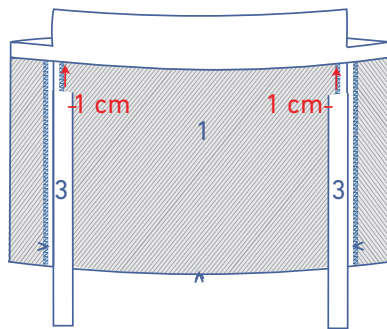
Turn the extended facing to the wrong side of the garment. Press the side seams open.



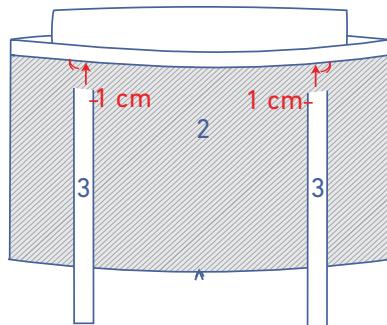
### 3

Fold the belt (3) in half lengthwise with the right side of the fabric facing inwards. Sew the indicated sides.

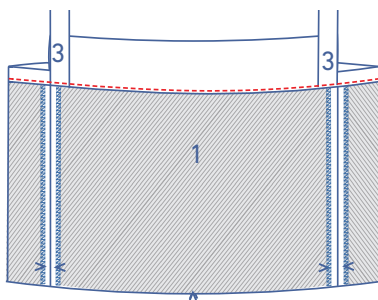
Turn the shoulder straps with the right side outside.



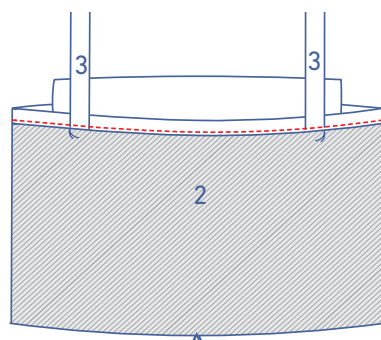
Slip the shoulder straps of the F with the unfinished side about 1 cm between the ironed back facing just beside the side seam.



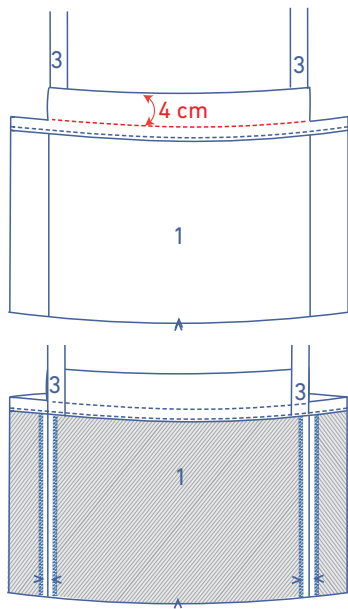
Slip the shoulder straps of the B with the unfinished side about 1 cm between the ironed back facing just beside the side seam.



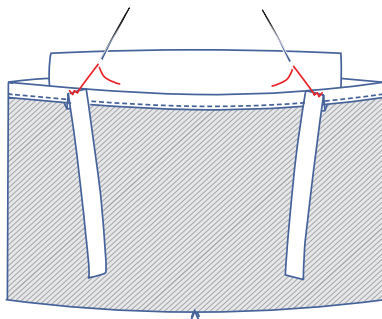
Fold the shoulder straps upwards and sew the casing in place along the edge.



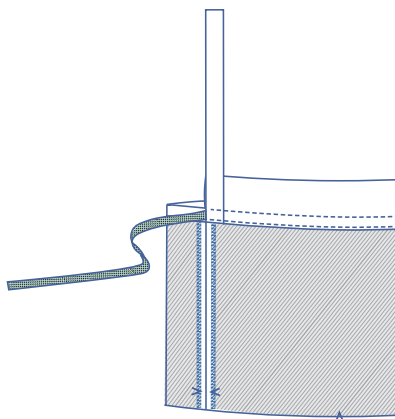




On the F, add a stitch at 4 cm from the top edge over the shoulder straps. This secures the shoulder straps better and you make the top stitch of the casing for the elastic.

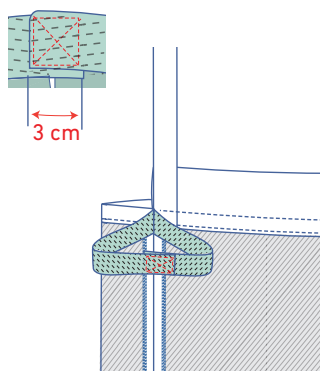


You can attach the shoulder straps of the F again by sewing the sides of the straps to the top of the garment.



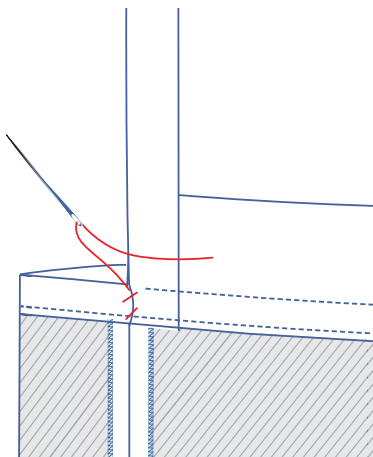
## 4

Thread the elastic band through the casing via the opening in the side seam.

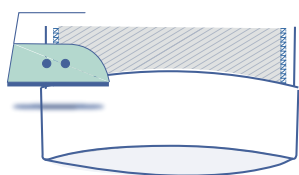


Allow 3 cm of the ends to overlap and sew together using a box X stitch.

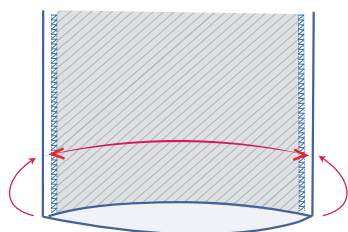
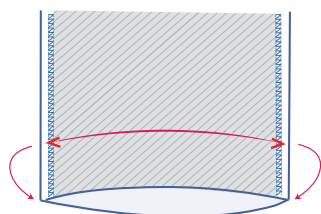
Pull the elastic through the casing completely.



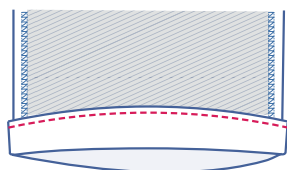
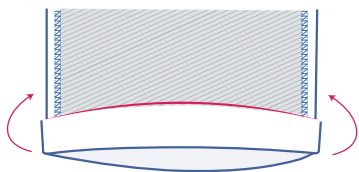
Then sew the opening closed.



Press the seam allowance up to the V notches and fold back down.



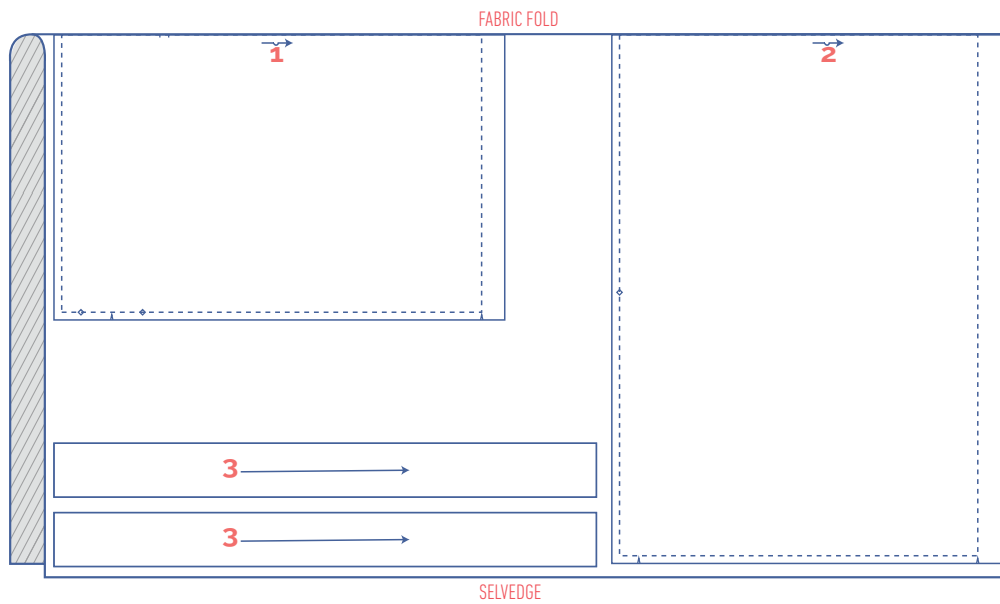
Fold the raw edge to the pressed fold line and then fold once again.



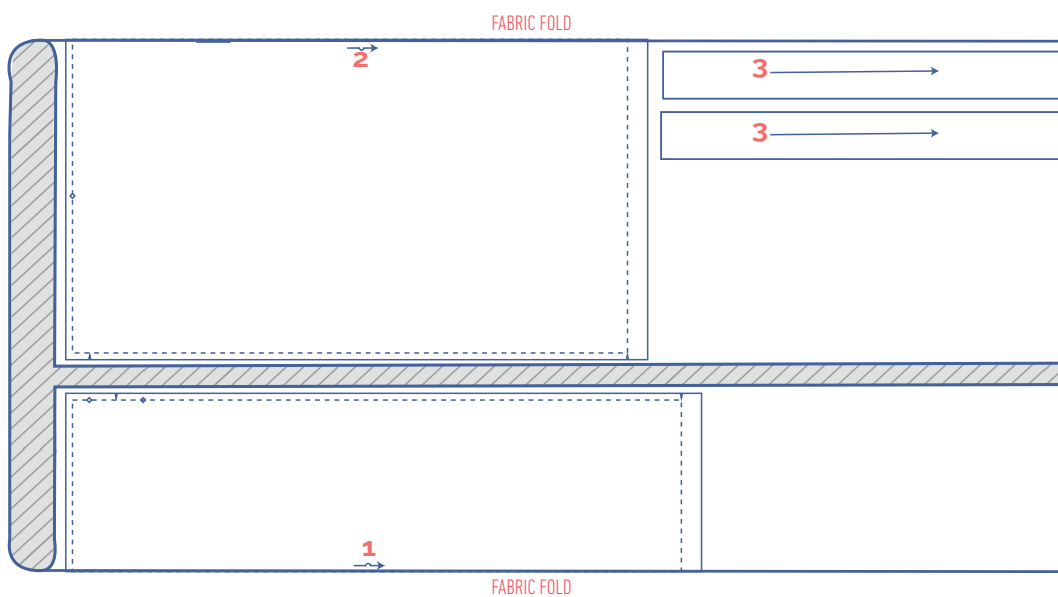
Sew in place next to the edge.

# fabric layout for fabrics 140 cm wide

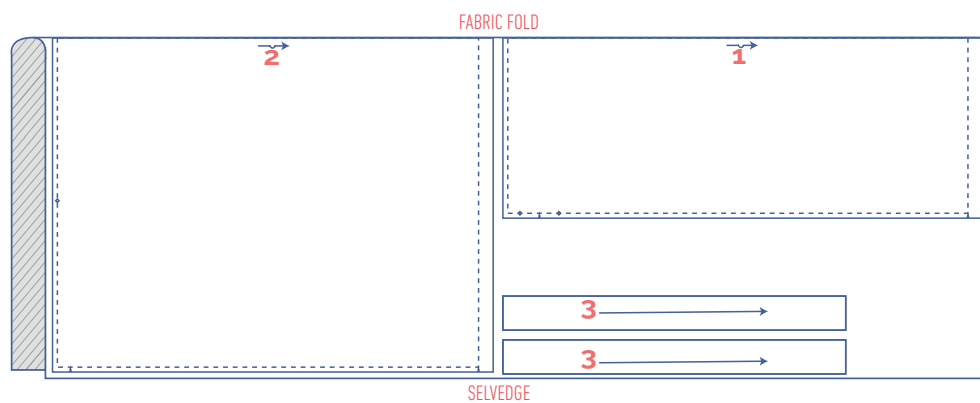
top  
size XS - XXXL



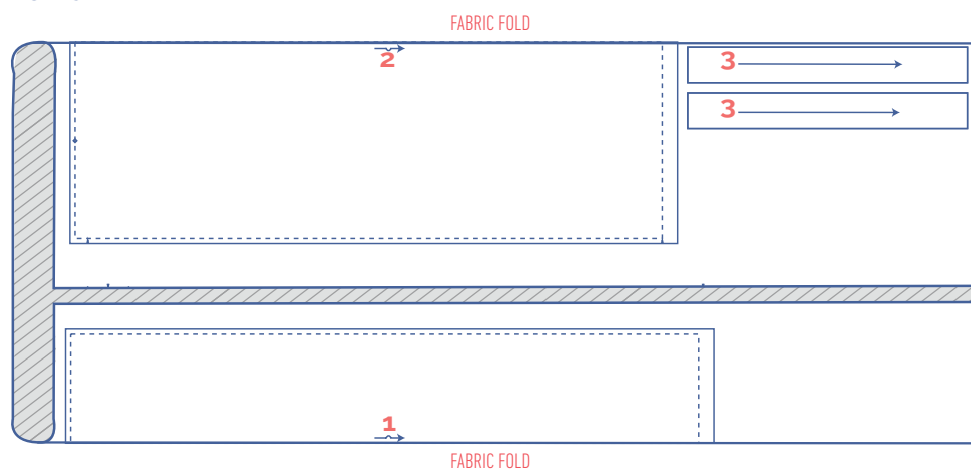
short dress  
size XS



## short dress size S - XXXL



## long dress size XS



## long dress size S - XXXL

