

# Robyn by Fibre ood

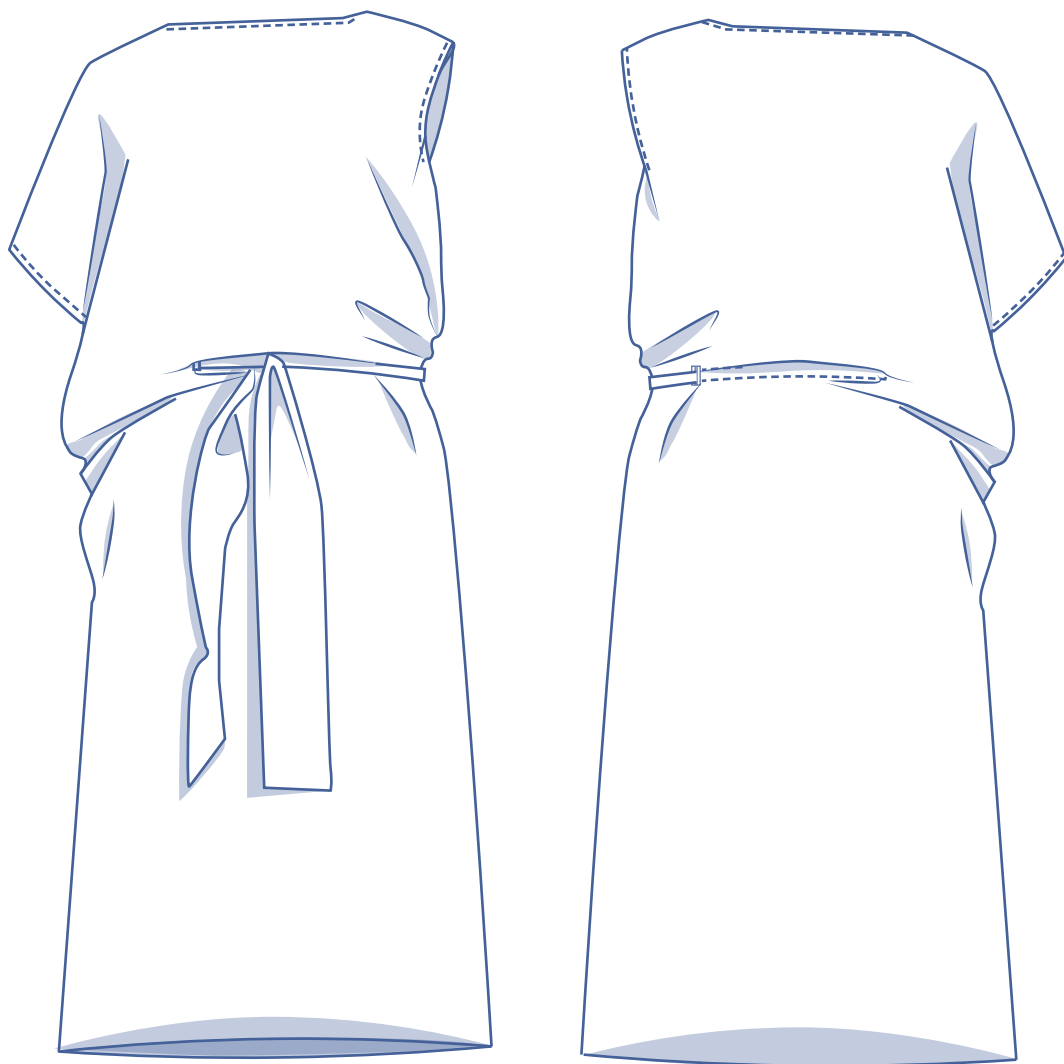


# Robyn by Fibre Mood



**XS - XXXL**

When you're pressed for time and need the ultimate party dress, Robyn is for you! Less is more when it comes to this slouchy, minimalistic style and the asymmetric fit adds a touch of nonchalance. It falls to just below the knee, making it easy to dress up or down with accessories. Make it up in a print or have fun colour-blocking the skirt and top!

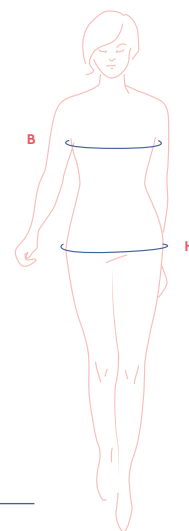


## size chart

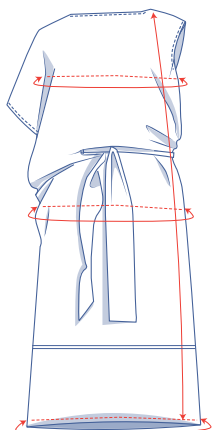
size	XS		S		M		L		XL		XXL		XXXL		
EU	32	34	36	38	40	42	44	46	48	50	52	54	56	58	60
UK	4	6	8	10	12	14	16	18	20	22	24	26	28	30	32
US	0	2	4	6	8	10	12	14	16	18	20	22	24	26	28
B (cm)	76	80	84	88	92	96	100	104	110	116	122	128	134	140	146
H (cm)	86	90	94	97	100	103	106	109	115	120	125	130	135	140	145

**Bust (B):** measure horizontally around the fullest part of the bust.

**Hips (H):** measure horizontally around the widest part of the lower body.



## finished garment measurements(in cm)



size	XS	S	M	L	XL	XXL	XXXL
length	108.5	109.75	110.75	112.75	114.25	116.75	118.25
bust	104.75	112.5	120.25	128	137.75	149.25	160.75
hips	102.25	110.25	118.25	126.25	136.5	148.75	160.75
hem circumference	104.75	112.75	120.75	129.25	139.25	151.5	163.5

Compare the stated lengths and widths to the measured or desired lengths and widths. **Lengthen** or **shorten** the dress by cutting the pattern pieces at the height of the indicated double lines and by moving the pattern pieces X cm apart or on top of each other as required. Make sure that the CF and CB lines and the side seams are always straight.



### IMPORTANT

Adapt the amount of fabric based on these alterations.

## supplies



- Thread
- Iron-on interfacing: max. 10 cm
- Fabric: see table

fabric used (in cm) F collection	XS	S	M	L	XL	XXL	XXXL
blue fabric fabric width 140 cm	245	245	245	250	255	305	340

Discover the Fibre Mood fabric collection and the accompanying fabric layouts [here](https://www.fibre mood.com/en/fabrics) or at [www.fibre mood.com/en/fabrics](https://www.fibre mood.com/en/fabrics).

fabric used (in cm) standard	XS	S	M	L	XL	XXL	XXXL
fabric width 140 cm	245	245	245	250	255	305	340

The corresponding fabric layout can be found on the last page of these sewing instructions.

## fabric advice



Select a fabric with a fluid drape, but that also has some body. Knitted and woven fabrics both work well here. Think silk, viscose or crepe blends; anything that will fall beautifully. Discover the Fibre Mood fabric collection and the accompanying fabric layouts [here](https://www.fibremood.com/en/fabrics) or at [www.fibremood.com/en/fabrics](https://www.fibremood.com/en/fabrics).

## pattern pieces & seam allowances (in cm)

To prepare the pattern before cutting you must first add the illustrated seam allowances around the paper pattern pieces as shown below.

### IMPORTANT

Pattern pieces 1 and 2 are the same pattern pieces.

1. front: 1x
2. back: 1x
3. binding for the belt opening: 4x
4. belt: 1x on fabric fold. You will need to draw this pattern piece yourself using the measurements in the table (in cm).

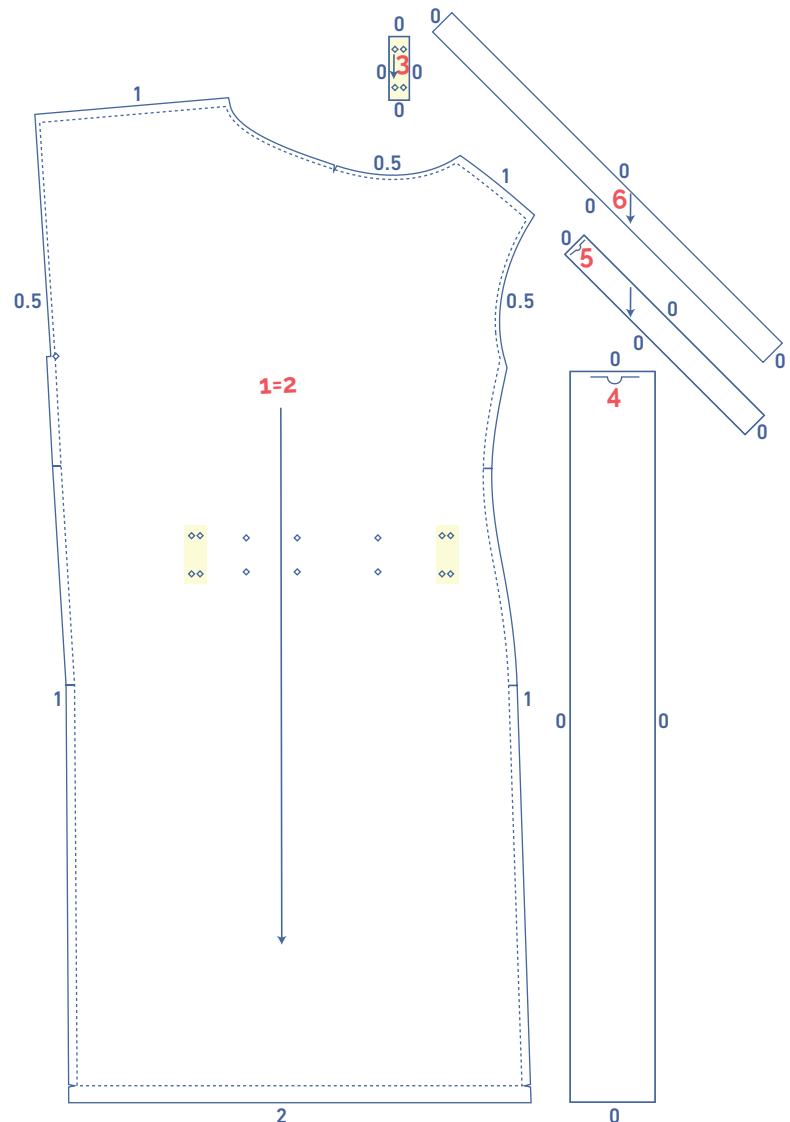
size	XS	S	M	L	XL	XXL	XXXL
length	86	94	102	110	120	132	144
width	10	10	10	10	10	10	10

5. bias neck binding: 1x on fabric fold (on the bias). You will need to draw this pattern piece yourself using the measurements in the table (in cm).

size	XS	S	M	L	XL	XXL	XXXL
length	30	30.25	30.5	30.5	31	31.25	31.5
width	3.25	3.25	3.25	3.25	3.25	3.25	3.25

6. bias armhole binding: 2x (on the bias). You will need to draw this pattern piece yourself using the measurements in the table (in cm).

size	XS	S	M	L	XL	XXL	XXXL
length	55	57	59	61	63	65.25	67.5
width	3.25	3.25	3.25	3.25	3.25	3.25	3.25



Mark the following important points on the pattern using a basting thread.

- Mark the belt opening on the front and back along with the location for where the belt will be sewn into place on the back by using a needle and basting thread (↻) to sew through the middle of the (◇).

Mark the following important points on the outline of the pattern.

- Cut a V notch out of the fabric at the V symbol and on the finished hemline.

**IMPORTANT**

The pieces highlighted in light yellow have iron-on interfacing attached to the wrong side.

# sewing instructions



The method used to finish sewing the garment seams depends on the fabric used. The pieces are always sewn together with right sides facing, unless stated otherwise.

FP front panel

BP back panel



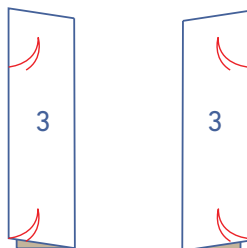
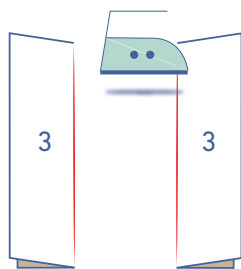
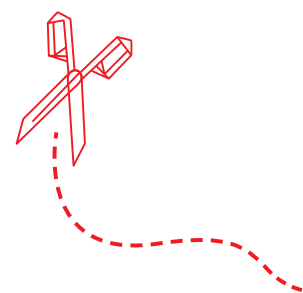
right side



reverse side



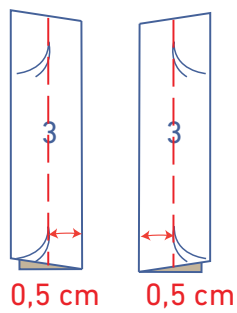
iron on interfacing



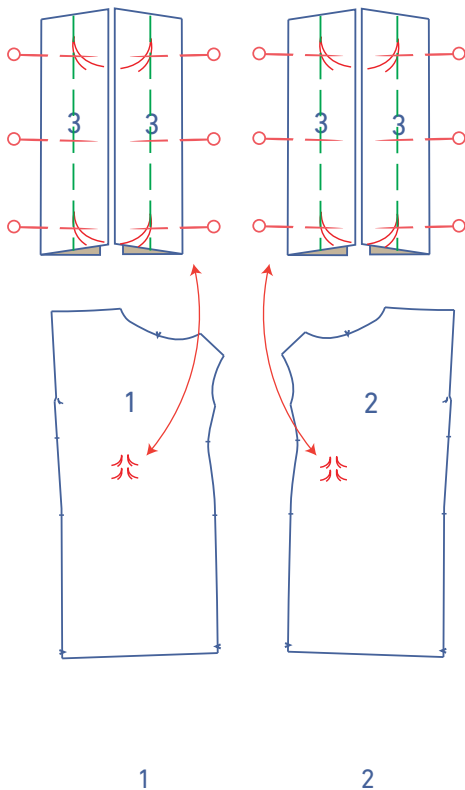
## 1

Press the belt opening fabric pieces (3) in half lengthwise with the right side facing out.

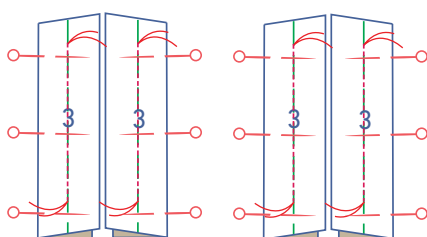
Use a basting thread (double layer) to mark the indicated points.



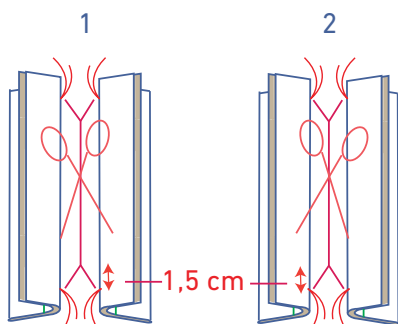
Sew using a basting stitch length at 0.5 cm from the fold line without back-stitching. This acts as a guideline for making sure that your stitching is perfectly straight.



Pin the the pieces of piping (with the fold facing outwards and the raw edges inwards) to the front (1) and back (2) with the basting perfectly lined up.

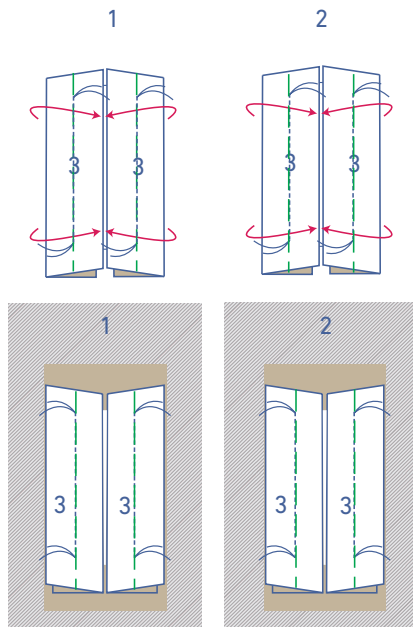


Sew the piping to the front by sewing directly on top of the previous line of stitching, but only sewing as far as the basting.

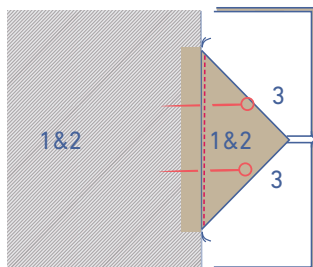


Fold both pieces of piping over to the side and snip into the front and back between the two lines of stitching, always stopping 1.5 cm away from the basting. At both ends of the centre line, snip two lines horizontally diagonally, precisely into the left and right corners. Take care not to cut through the stitching.

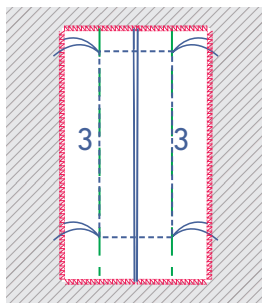




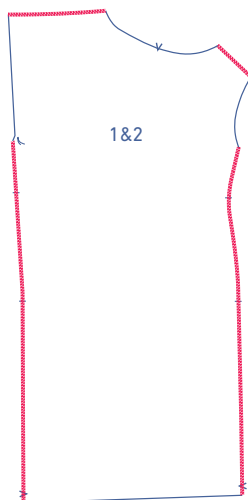
Turn the piping pieces and the triangles (of the shaped front and back) through the opening and over to the wrong side.



Lay the piping pieces neatly side by side and sew these and the folded over triangle at both ends of the opening.

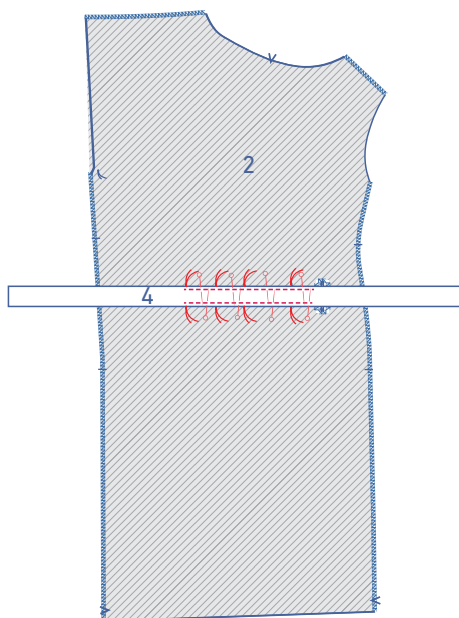


Finish the raw edges of the piping together using an overlock stitch.



## 2

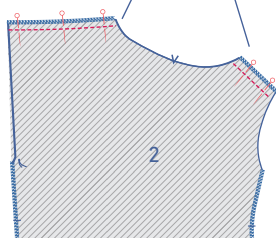
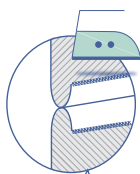
Finish the shoulder and side seams of the front and back using an overlock stitch.



### 3

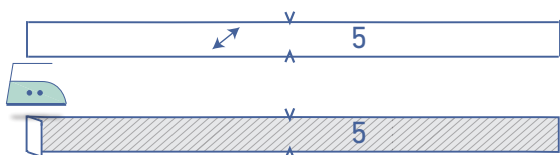
Fold the belt (4) in half lengthwise with the right side of the fabric facing in. Sew the indicated sides, leaving a gap of several cm. Next, turn the belt back right side out.

Pin the top and bottom of the centre most piece of the belt to the wrong side of the back at the place indicated. Sew in place right next to the edge.



### 4

Pin and sew the shoulder seams. Press the seam allowance open.



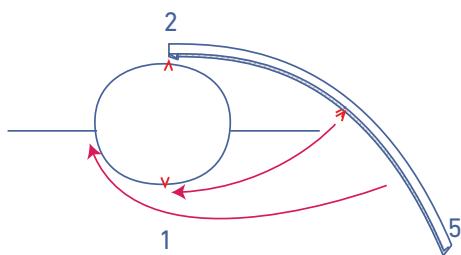
### 5

Press 1 short side of the neckline bias tape (5) 1 cm over to the wrong side.

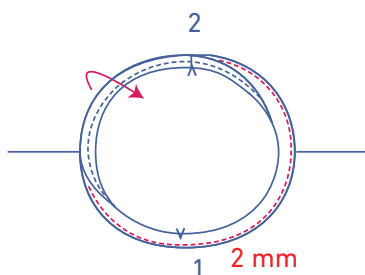
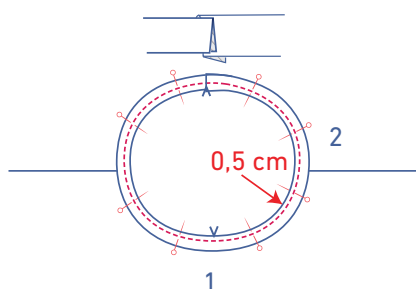




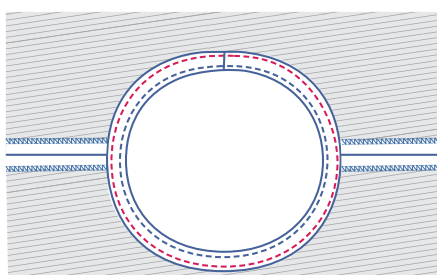
Press the bias tape in half lengthwise with the right side of the fabric facing outwards.



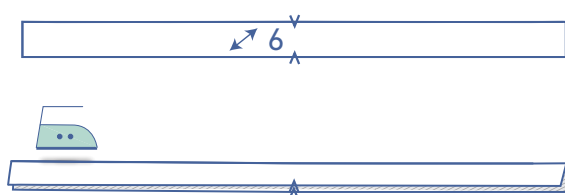
Pin both raw edges to the neckline along the right side with the folded ends lined up with the CB and the V notch matching the V notch that indicates the CF. Sew into place at 0.5 cm.



Fold the bias tape and seam allowances away from the dress and understitch through all facing layers at 2 mm from the seam.

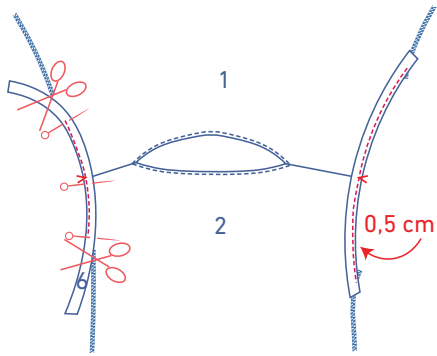


Fold the bias tape back over to the wrong side and sew into place right next to the fold line.

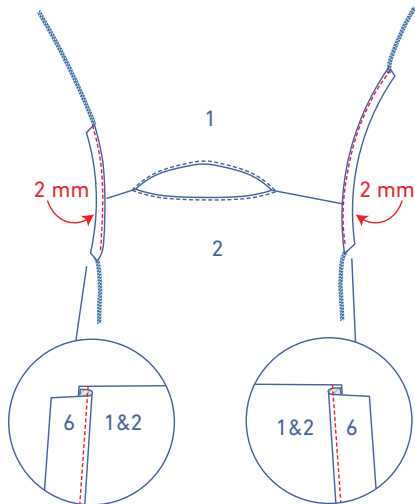


## 6

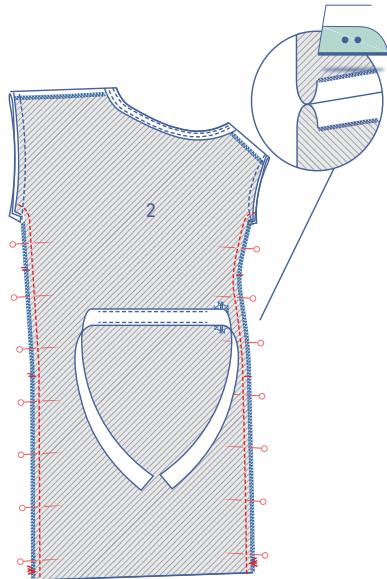
Press the armhole bias tape (6) in half with the right side of the fabric facing out.



Pin both raw edges of the bias tape to the armhole along the right side of the work piece. The V notch marking the middle should line up with the shoulder seam. Note: the bias tape will be too long for the left armhole. Pin the V notch lined up with the shoulder seam and continue pinning the raw edges to the armholes. Snip the excess fabric off. Sew in place at 0.5 cm.

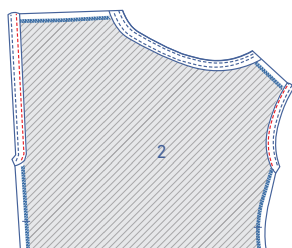


Fold the bias tape and seam allowances away from the armhole and understitch through all facing layers at 2 mm from the seam.



## 7

Pin and sew the side seams (with the bias tape folded to the side throughout). Press the seam allowance open.



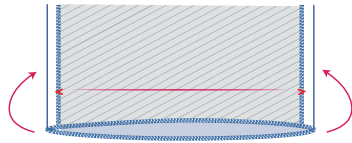
Fold the bias tape all the way over to the wrong side and sew into place right next to the fold line.



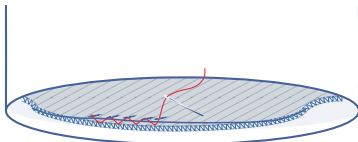
---

**8**

Finish the hem using an overlock stitch.



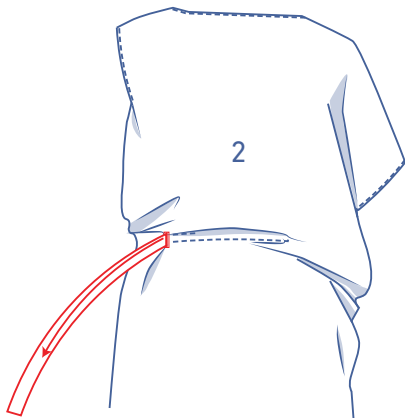
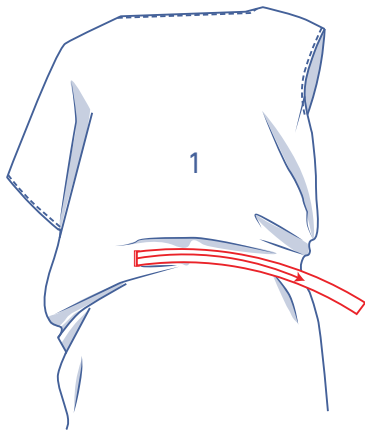
Press the seam allowance up to the V notches and sew in place.



---

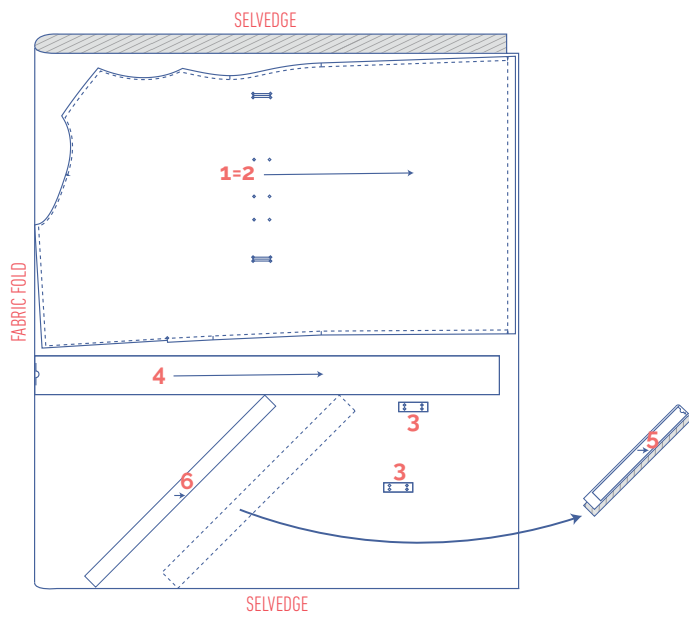
**9**

Thread the belt through the openings.



# fabric layout for fabrics 140 cm wide

sizes XS - XL



sizes XXL - XXXL

